



# GFIE Index February 2014

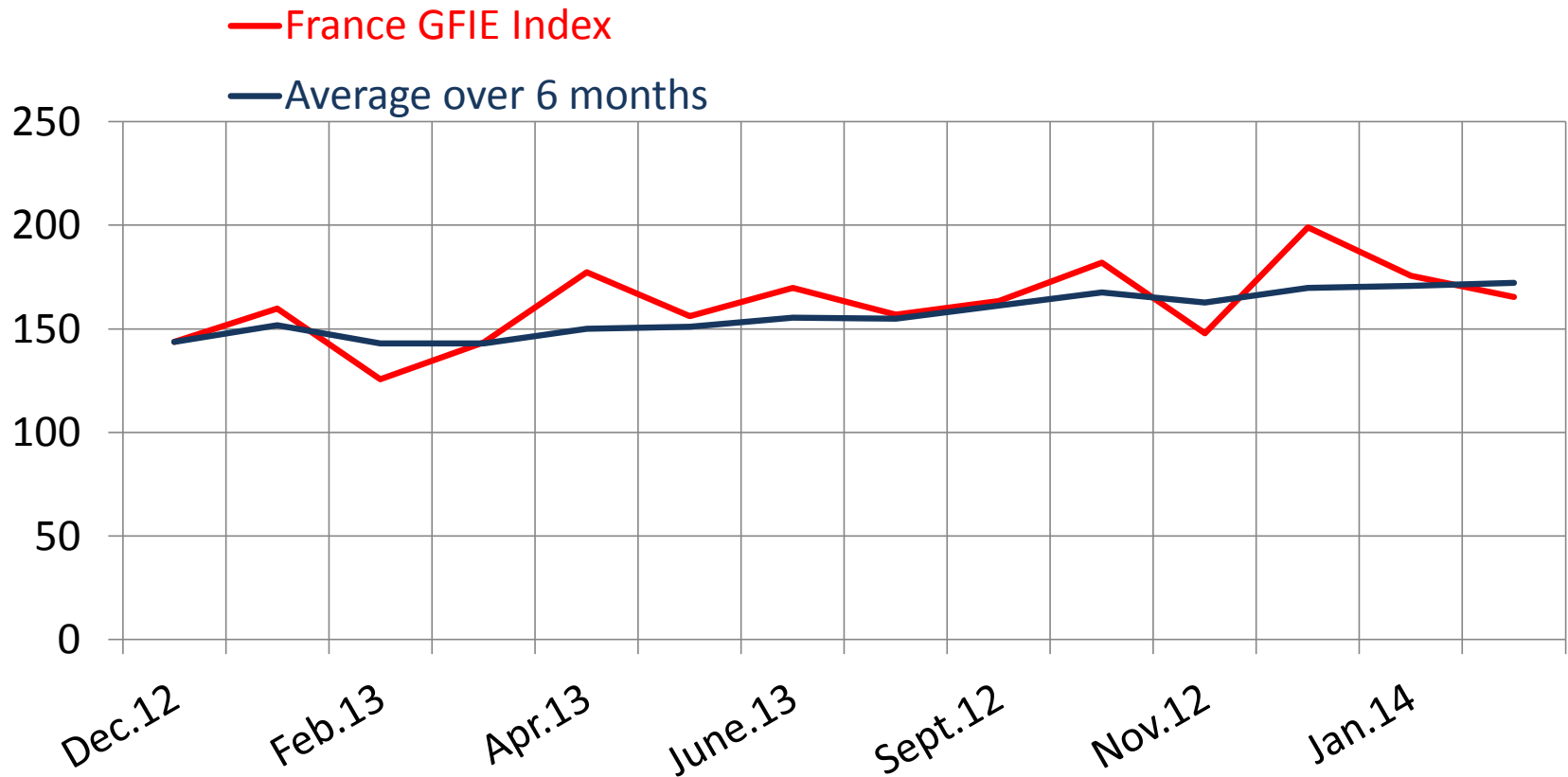
## Comments from M. Pierre-Jean Albrieux, President of the GFIE

Despite a small decrease in the French index compared to January, it is still above the February one. The trust index remains high at 5,41. The year 2014 is beginning well compared to the previous years. Most of members' comments are positive but a little more mixed than last month. No special sign of anxiety to report.

Trust Index	France Index variation over January	Book Bill
5.41	-5.88%	1.003

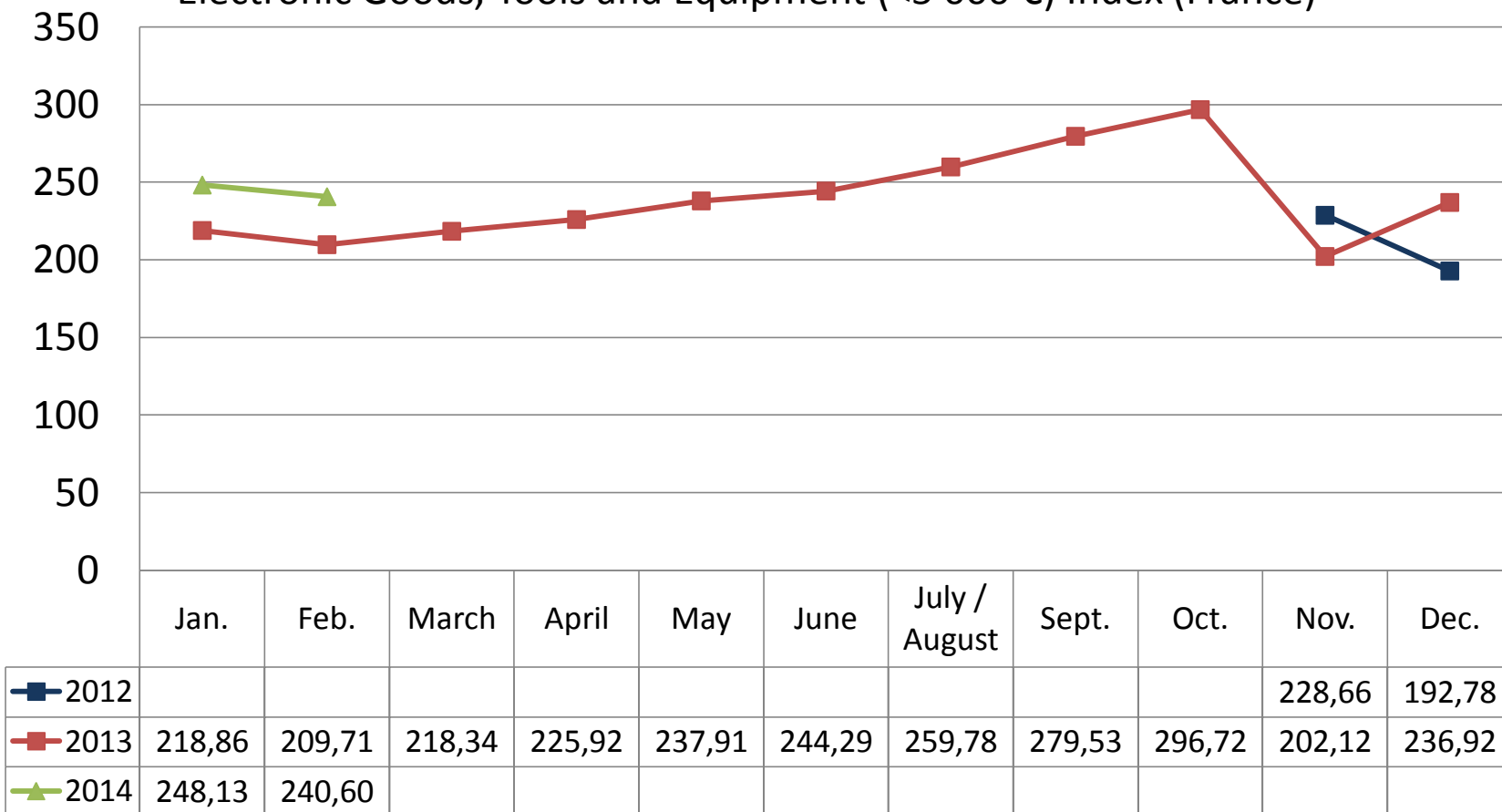
	Feb-13	Mar-13	Apr-13	May-13	Jun-13	Ju/Au-13	Sep-13	Oct-13	Dec-13	Jan-14	Feb-14
France GFIE Index	125.59	143.34	177.34	156.14	169.78	156.82	163.36	147.91	198.90	175,60	165.27
Average over six months	145.93	145.41	150.73	150.96	155.32	154.84	161.13	162.67	169.80	170,77	172.18

# GFIE Index February 2014



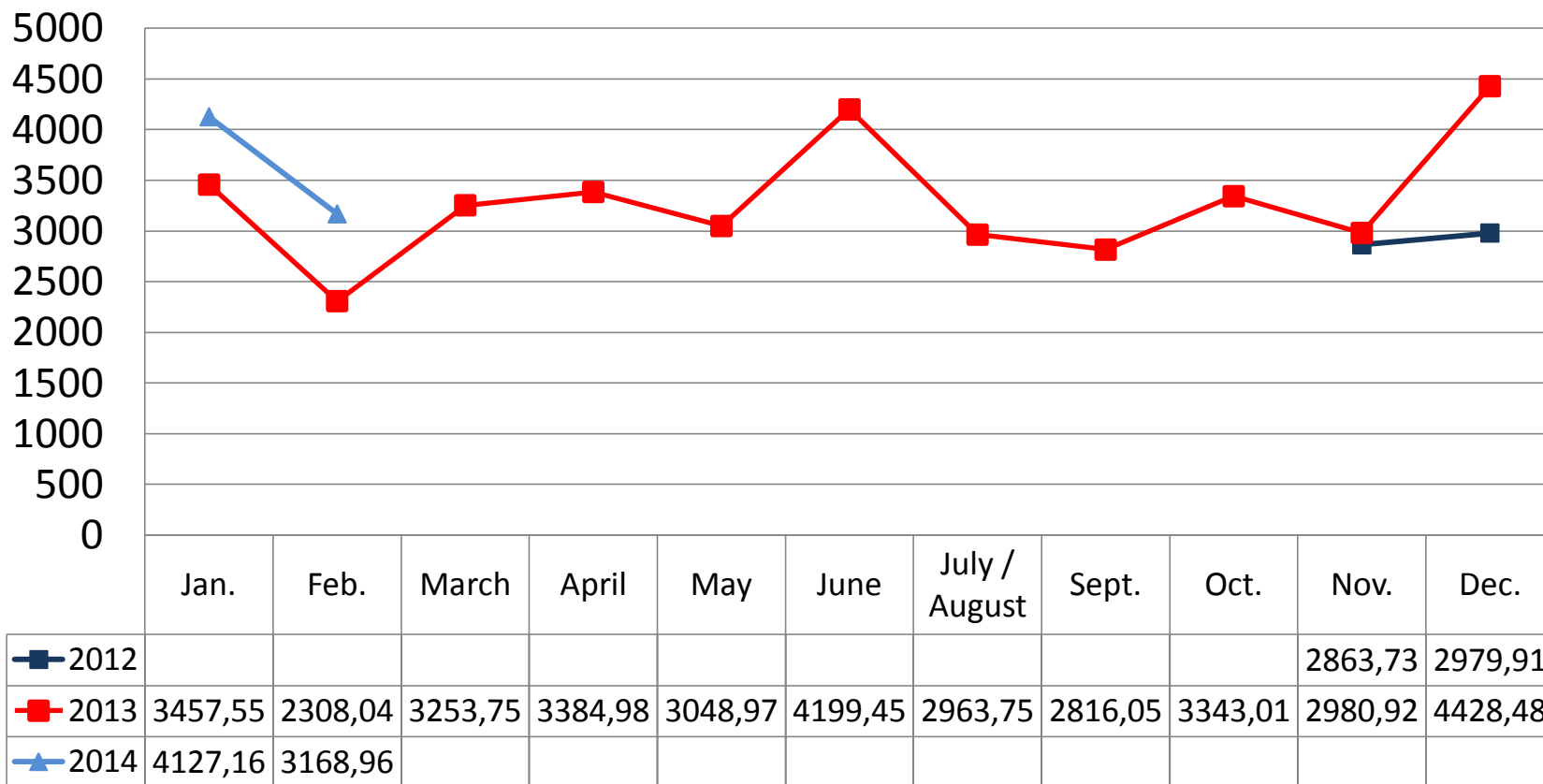
# GFIE Index February 2014

Electronic Goods, Tools and Equipment (<5 000 €) Index (France)



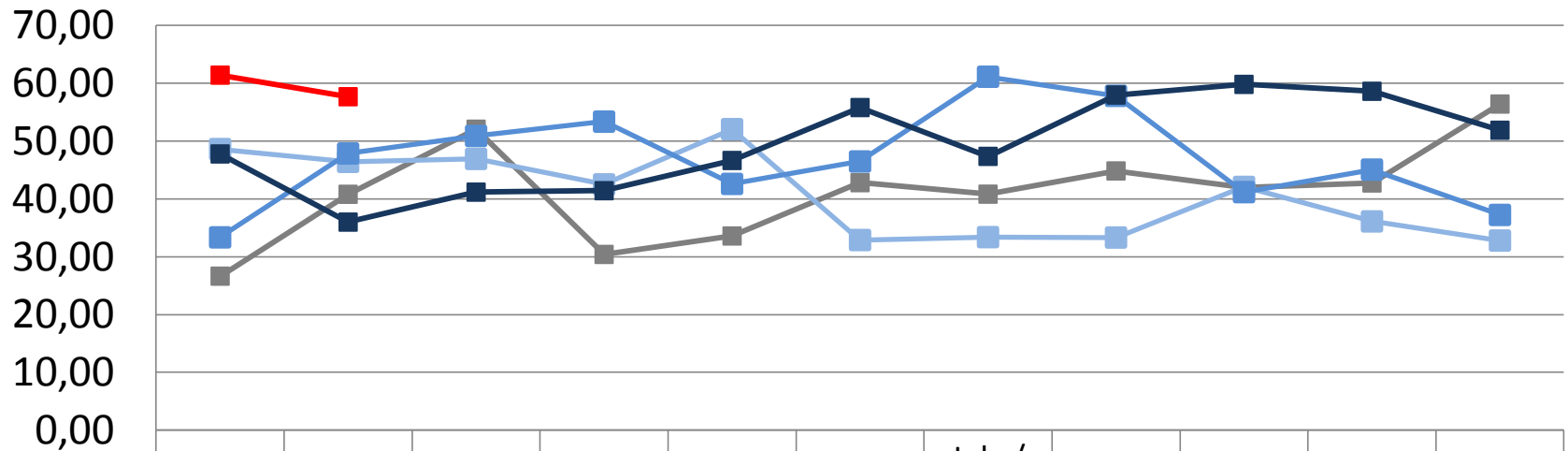
# GFIE Index February 2014

Machines, Products and Services to production Index (France)



# GFIE Index February 2014

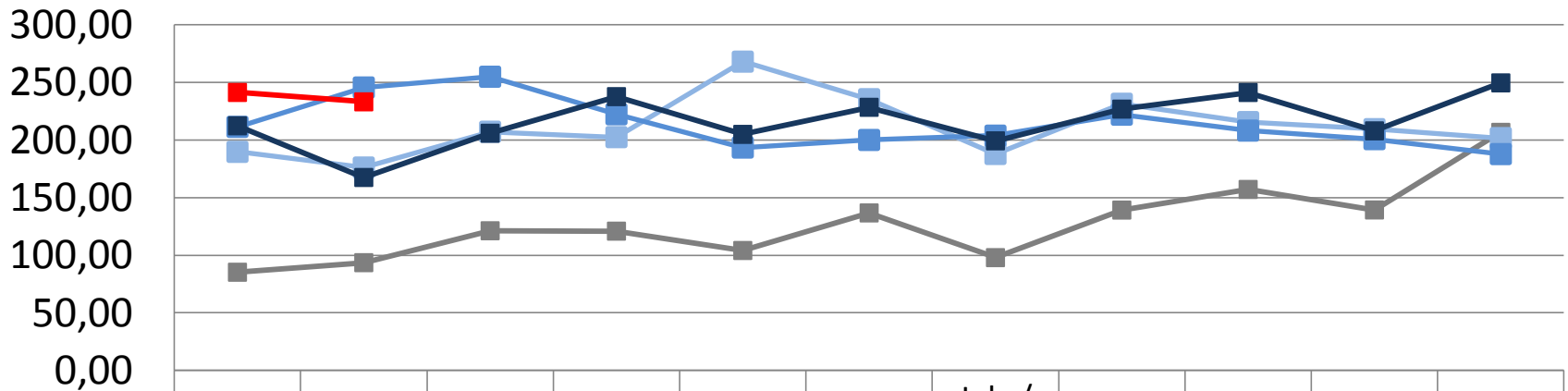
## Export Index



	Jan.	Feb.	March	April	May	June	July / August	Sept.	Oct.	Nov.	Dec.
—■— 2010	26,64	40,80	52,06	30,40	33,59	42,81	40,82	44,84	42,00	42,76	56,41
—■— 2011	48,62	46,41	46,92	42,51	52,07	32,89	33,39	33,32	42,08	36,11	32,80
—■— 2012	33,35	47,86	50,89	53,37	42,60	46,48	61,13	57,83	41,17	45,07	37,23
—■— 2013	47,78	35,99	41,17	41,42	46,65	55,80	47,36	57,97	59,81	58,62	51,88
—■— 2014	61,41	57,68									

# GFIE Index February 2014

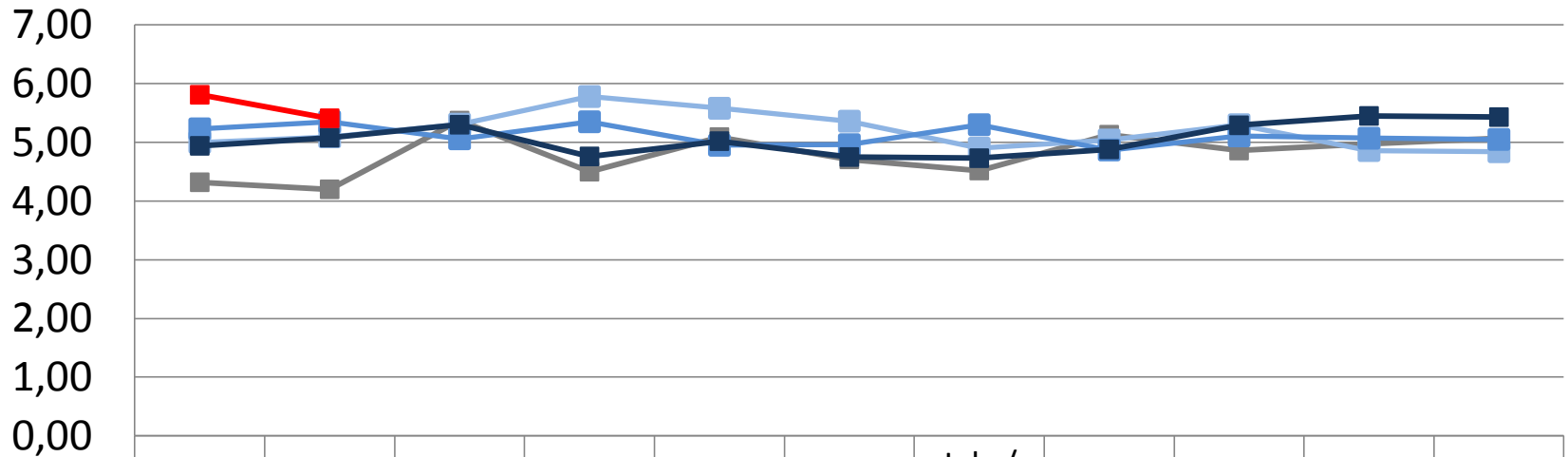
Evolution of the global GFIE index (France + Export) between 2010 & 2014



	Jan.	Feb.	March	April	May	June	July / August	Sept.	Oct.	Nov.	Dec.
■ 2010	85,23	93,54	121,23	120,90	104,10	136,70	97,90	139,20	157,10	139,30	206,64
■ 2011	189,70	176,11	207,21	202,49	268,02	235,44	187,88	231,47	215,57	209,44	201,66
■ 2012	211,41	245,61	254,93	222,34	193,45	200,04	203,81	221,98	208,16	200,74	187,77
■ 2013	212,34	167,47	205,88	237,66	204,89	228,38	199,27	226,82	241,24	207,94	249,58
■ 2014	241,27	233,14									

# GFIE Index February 2014

Trust Index



	Jan.	Feb.	March	April	May	June	July / August	Sept.	Oct.	Nov.	Dec.
—■— 2010	4,32	4,20	5,37	4,50	5,09	4,71	4,52	5,13	4,86	4,97	5,07
—■— 2011	5,00	5,09	5,31	5,78	5,58	5,36	4,90	5,04	5,30	4,86	4,84
—■— 2012	5,23	5,35	5,06	5,35	4,95	4,96	5,30	4,87	5,11	5,07	5,05
—■— 2013	4,94	5,08	5,30	4,76	5,02	4,75	4,73	4,88	5,29	5,45	5,43
—■— 2014	5,81	5,41									



# GFIE Index February 2014

Book Bill

