



GFIE Index July/August 2014

Comments from M. Pierre-Jean Albrieux, President of the GFIE

Well, all indicators are on green !

Given the rainfall of July and August there is nothing surprising about it.

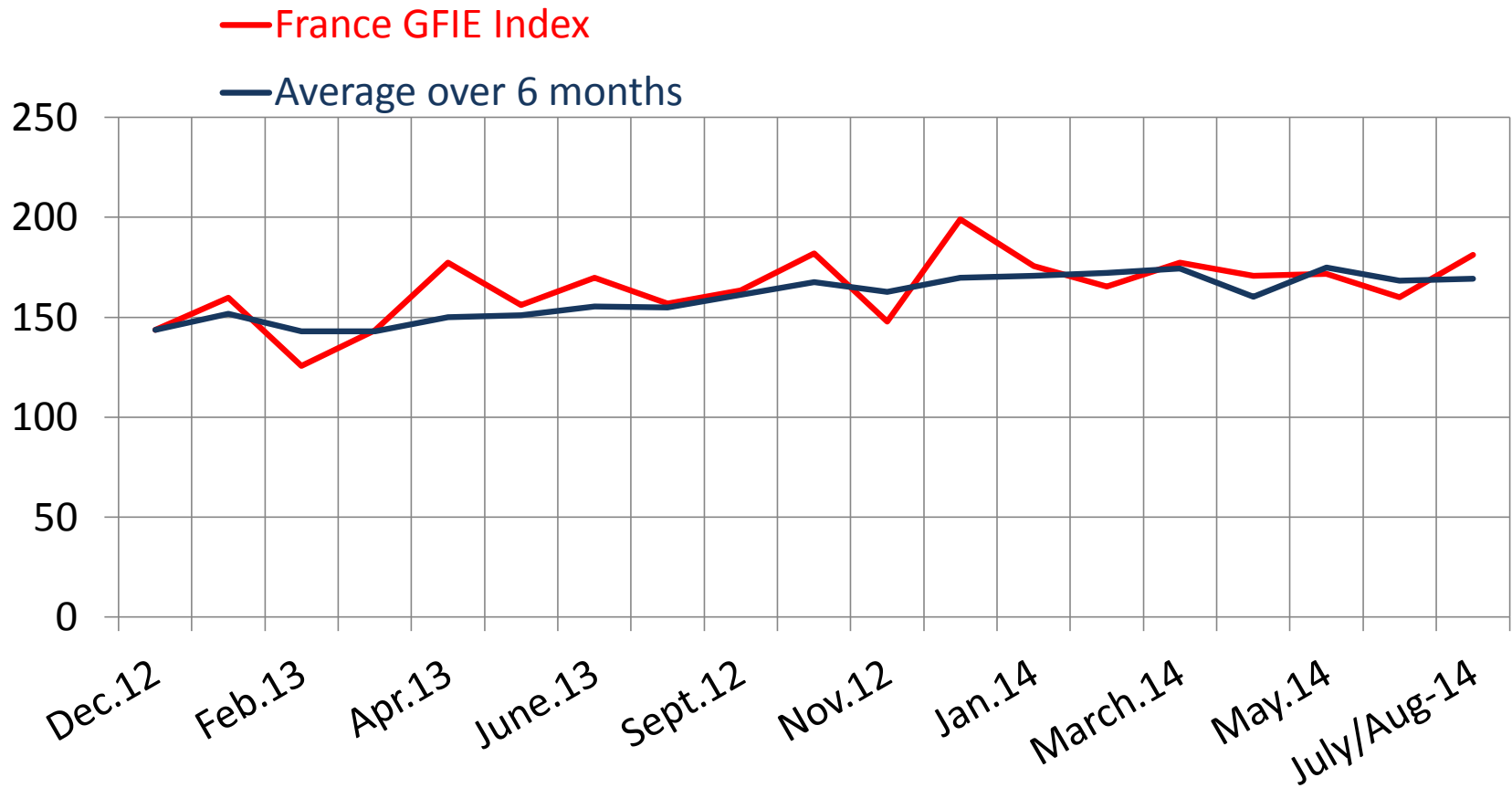
The France index has increased by 13,2%, and the global index, including France and export has risen by 33%, the trust index has rebounded up to 5,57. That calls for a drink.

Nevertheless, do not count our chickens before they hatch, our visibility is still weak, and doesn't encourage the anticipation; and given the fact that this has been going on for some time we will be forced to do with it, this seems to become a feature of our activities. We don't see electronic anymore because it is everywhere and it is also produced in France: there is evidence of this.

Trust Index	France Index variation over June	Book Bill
5.57	+13.2%	1.11

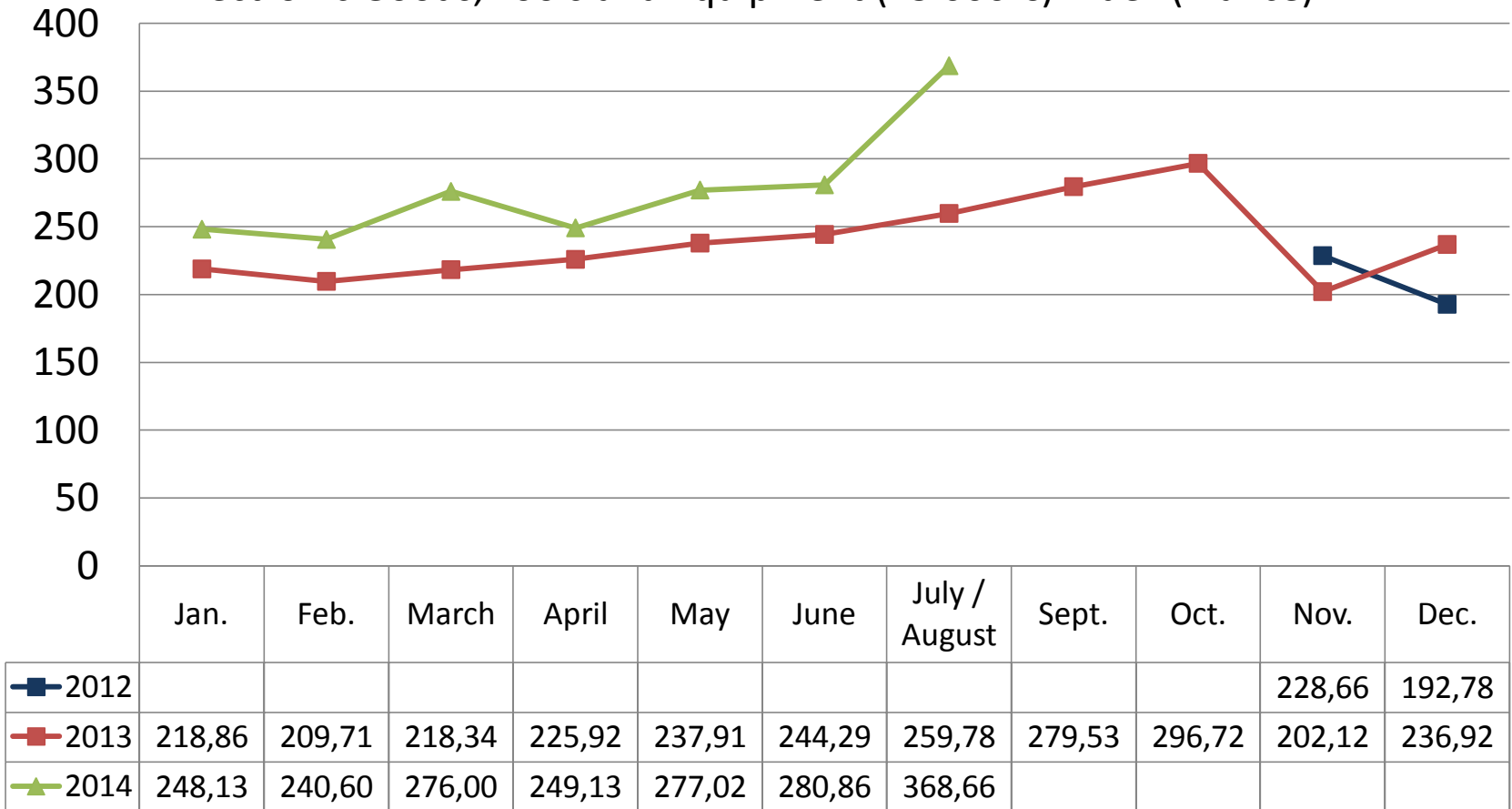
	Ju/Au-13	Sep-13	Oct-13	Dec-13	Jan-14	Feb-14	Mar-14	Apr-14	May-14	June-14	July/Aug-14
France GFIE Index	156.82	163.36	147.91	198.90	175.60	165.27	177.24	160.26	171.74	160.02	181.24
Average over six months	154.84	161.13	162.67	169.80	170.77	172.18	174.49	170.86	174.84	168.36	169.30

GFIE Index July/August 2014



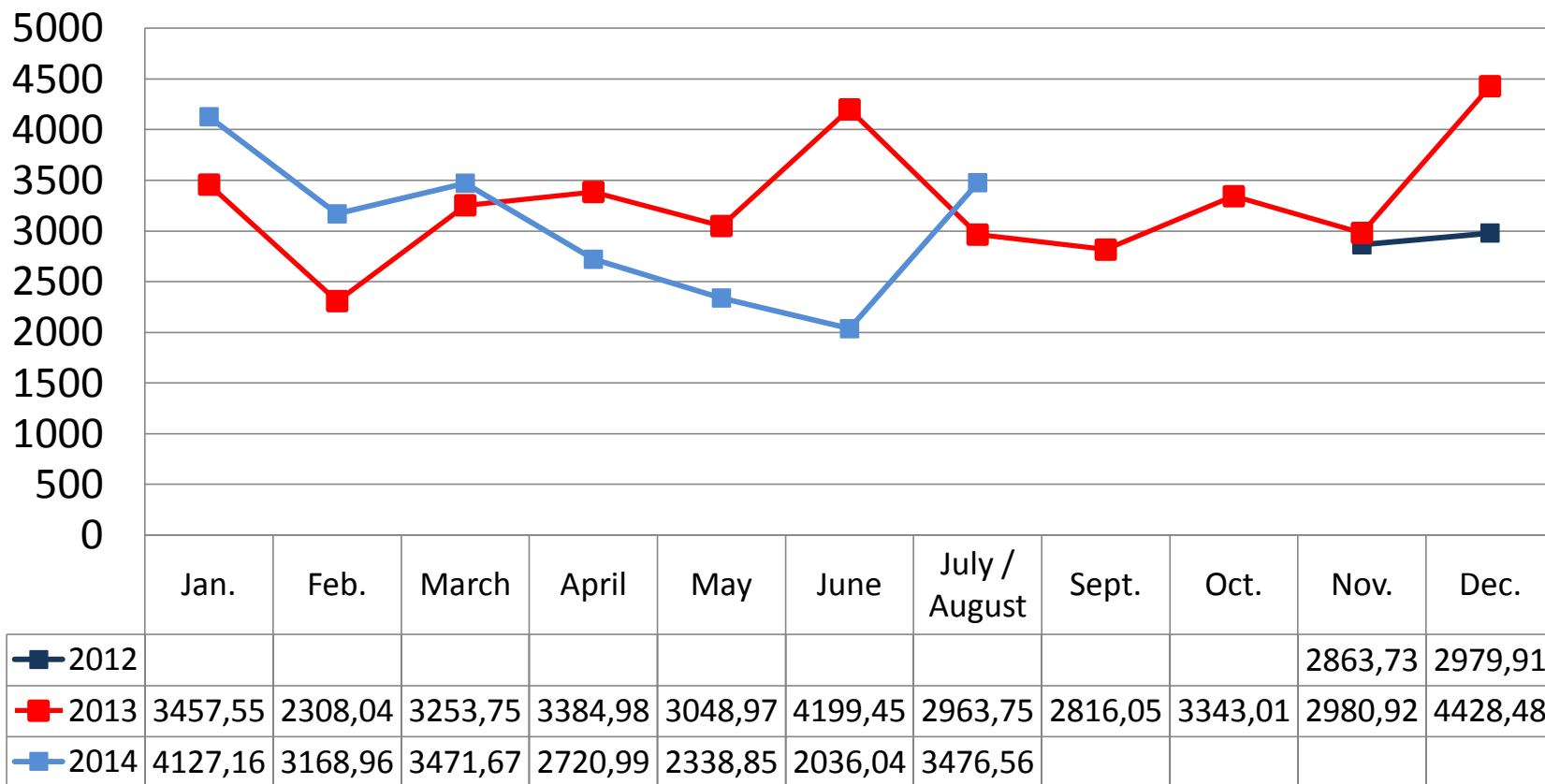
GFIE Index July/August 2014

Electronic Goods, Tools and Equipment (<5 000 €) Index (France)



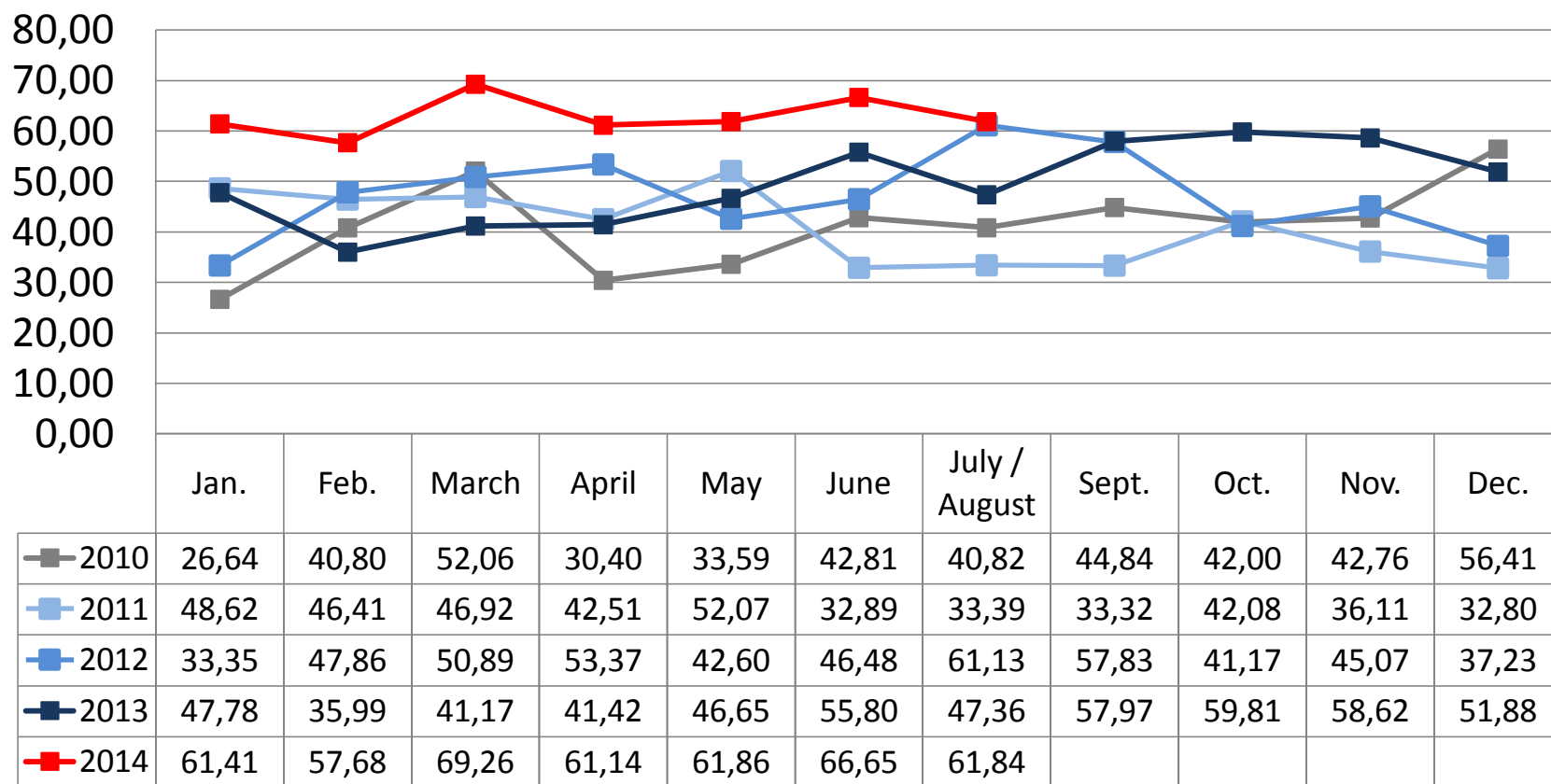
GFIE Index July/August 2014

Machines, Products and Services to production Index (France)



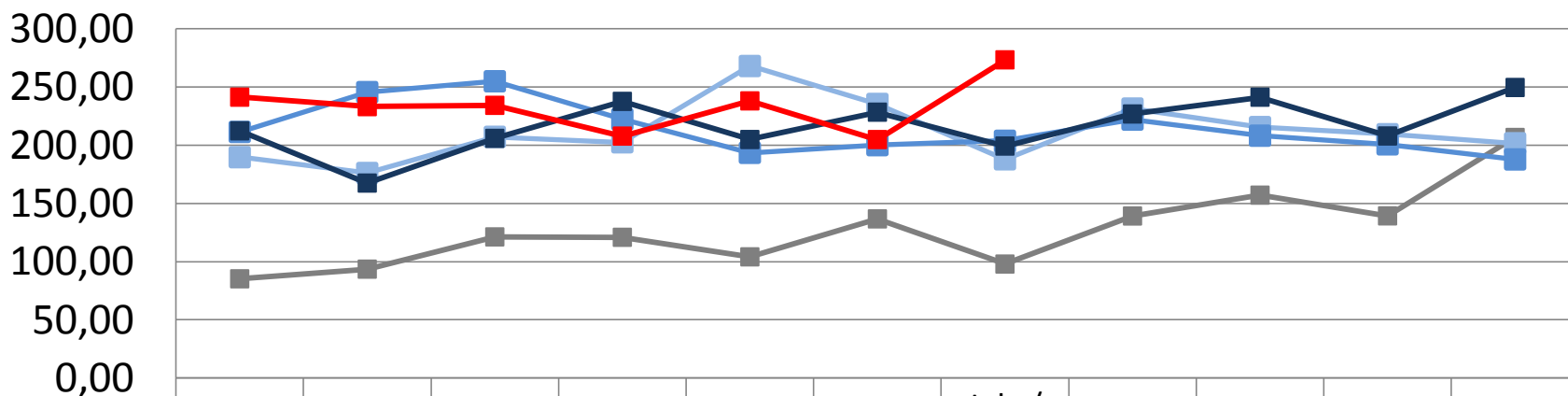
GFIE Index July/August 2014

Export Index



GFIE Index July/August 2014

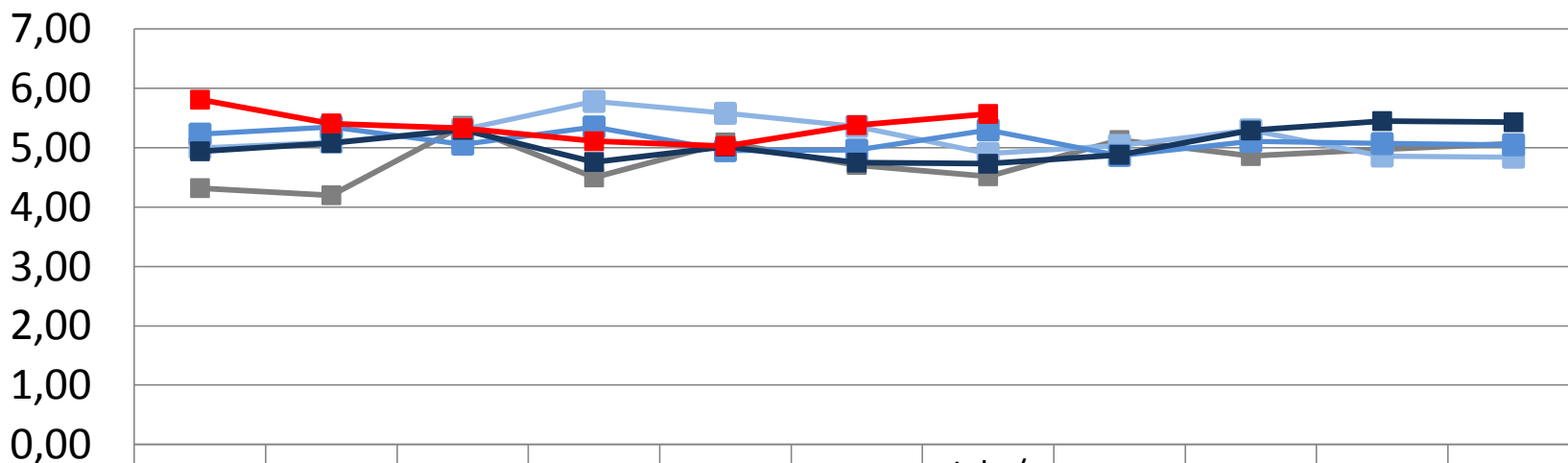
Evolution of the global GFIE index (France + Export) between 2010 & 2014



	Jan.	Feb.	March	April	May	June	July / August	Sept.	Oct.	Nov.	Dec.
■ 2010	85,23	93,54	121,23	120,90	104,10	136,70	97,90	139,20	157,10	139,30	206,64
■ 2011	189,70	176,11	207,21	202,49	268,02	235,44	187,88	231,47	215,57	209,44	201,66
■ 2012	211,41	245,61	254,93	222,34	193,45	200,04	203,81	221,98	208,16	200,74	187,77
■ 2013	212,34	167,47	205,88	237,66	204,89	228,38	199,27	226,82	241,24	207,94	249,58
■ 2014	241,27	233,14	234,25	207,82	238,08	204,85	273,33				

GFIE Index July/August 2014

Trust Index



	Jan.	Feb.	March	April	May	June	July / August	Sept.	Oct.	Nov.	Dec.
—■— 2010	4,32	4,20	5,37	4,50	5,09	4,71	4,52	5,13	4,86	4,97	5,07
—■— 2011	5,00	5,09	5,31	5,78	5,58	5,36	4,90	5,04	5,30	4,86	4,84
—■— 2012	5,23	5,35	5,06	5,35	4,95	4,96	5,30	4,87	5,11	5,07	5,05
—■— 2013	4,94	5,08	5,30	4,76	5,02	4,75	4,73	4,88	5,29	5,45	5,43
—■— 2014	5,81	5,41	5,33	5,11	5,03	5,38	5,57				

GFIE Index July/August 2014

Book Bill

