



GFIE Index November 2013

Comments from M. Pierre-Jean Albrieux, President of the GFIE

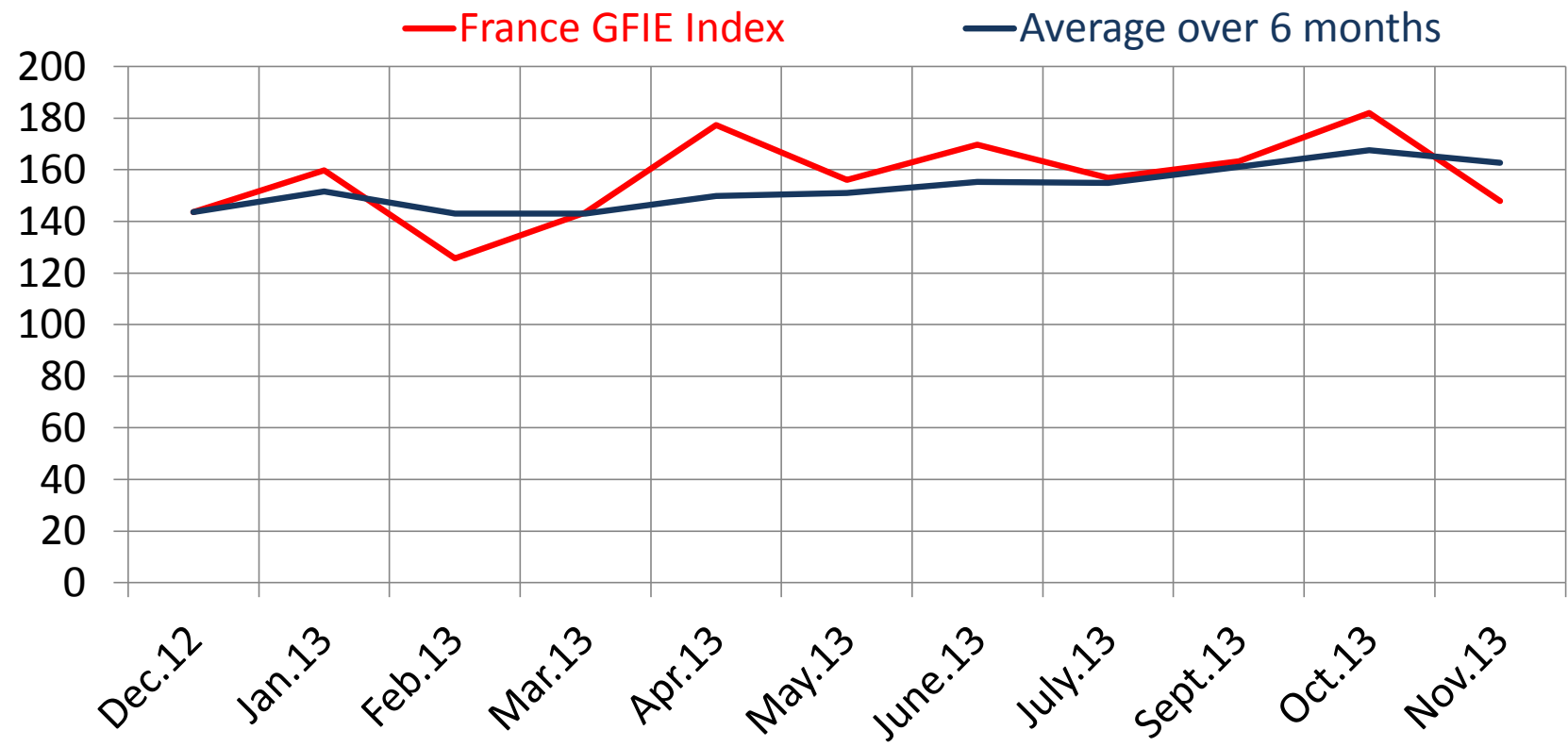
Here are index that I don't like. They have all decreased this month except the trust index of 5,45 , which reached the bronze medal since January 2009. Would there be some masochism among the GFIE members? A variation of -18,73% in relation to October for the France GFIE index , -13,80% for the global GFIE index and -33% for the electronic goods tools and equipment index ,it's sharp. But I can reassure you , these figures are pessimistic, not all the members have sent their results this time , but still November is weaker than October, a fact which is a truism because November is always weaker than October. For most of the members, hope comes from the fact that the end of the year is much better than the beginning. Like one of the member says , let's hope that no politician comes to tax it .

Trust Index	France Index variation over October	Book Bill
5.45	-18,73%	0.985

	Dec-12	Jan-13	Feb-13	Mar-13	Apr-13	May-13	Jun-13	Ju/Au-13	Sep-13	Oct-13	Nov-13
France GFIE Index	143.61	159.73	125.59	143.34	177.34	156.14	169.78	156.82	163.36	182.01	147.91
Average over six months	149.19	152.70	145.93	145.41	150.73	150.96	155.32	154.84	161.13	167.58	162.67

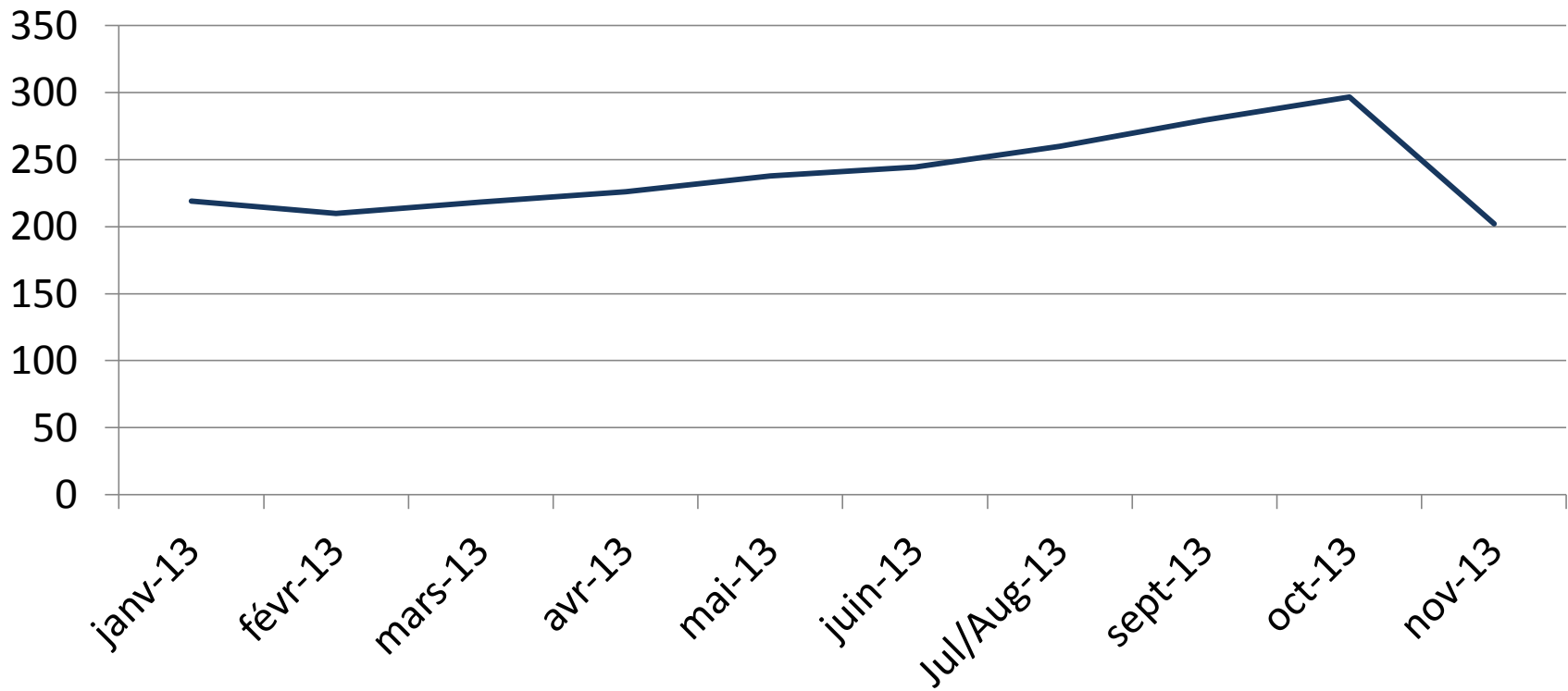


GFIE Index November 2013



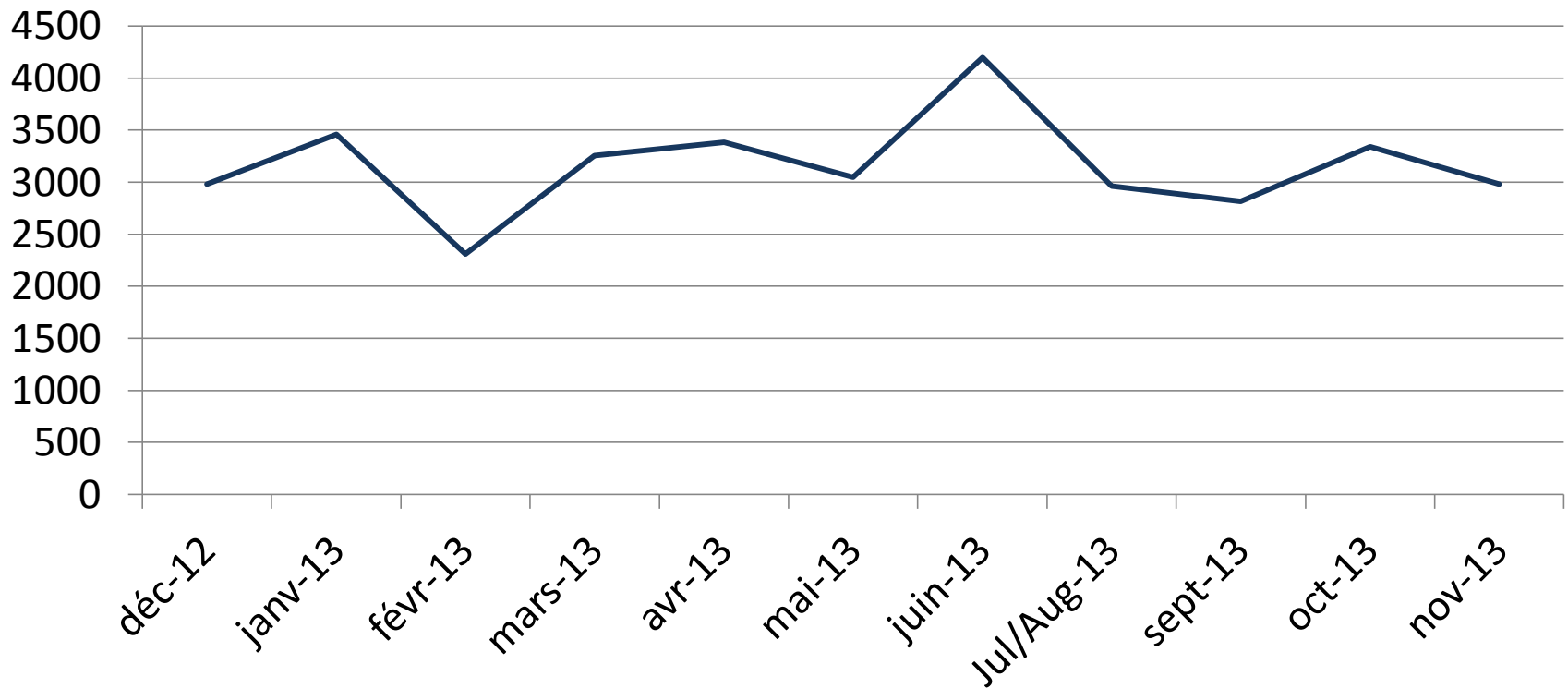
GFIE Index November 2013

Electronic Goods, Tools and Equipment (<5 000 €) Index
(France)



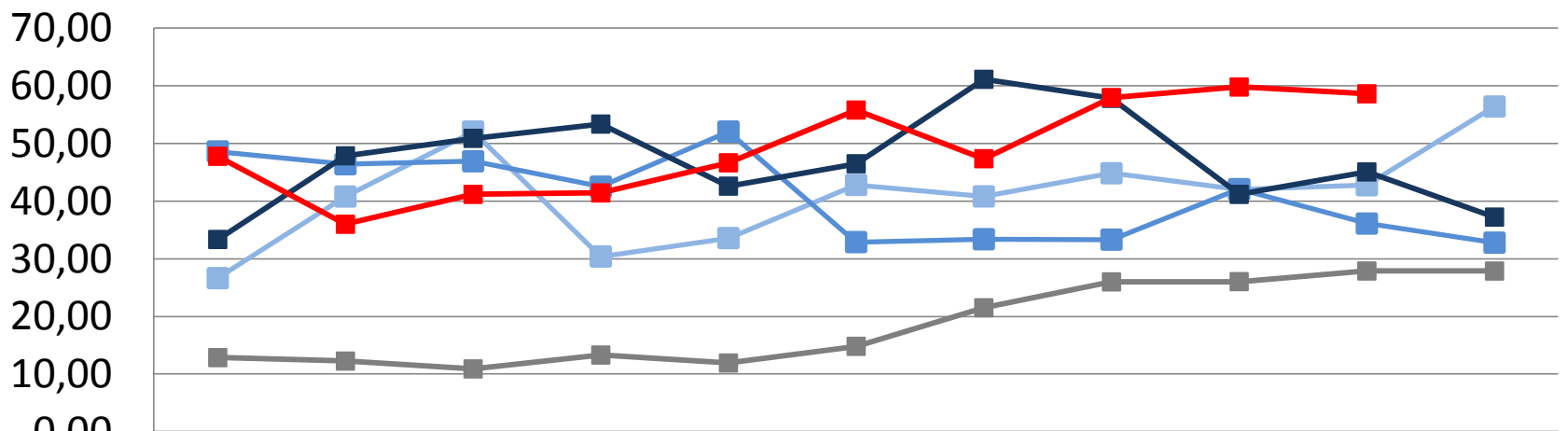
GFIE Index November 2013

Machines, Products and Services to production Index
(France)



GFIE Index November 2013

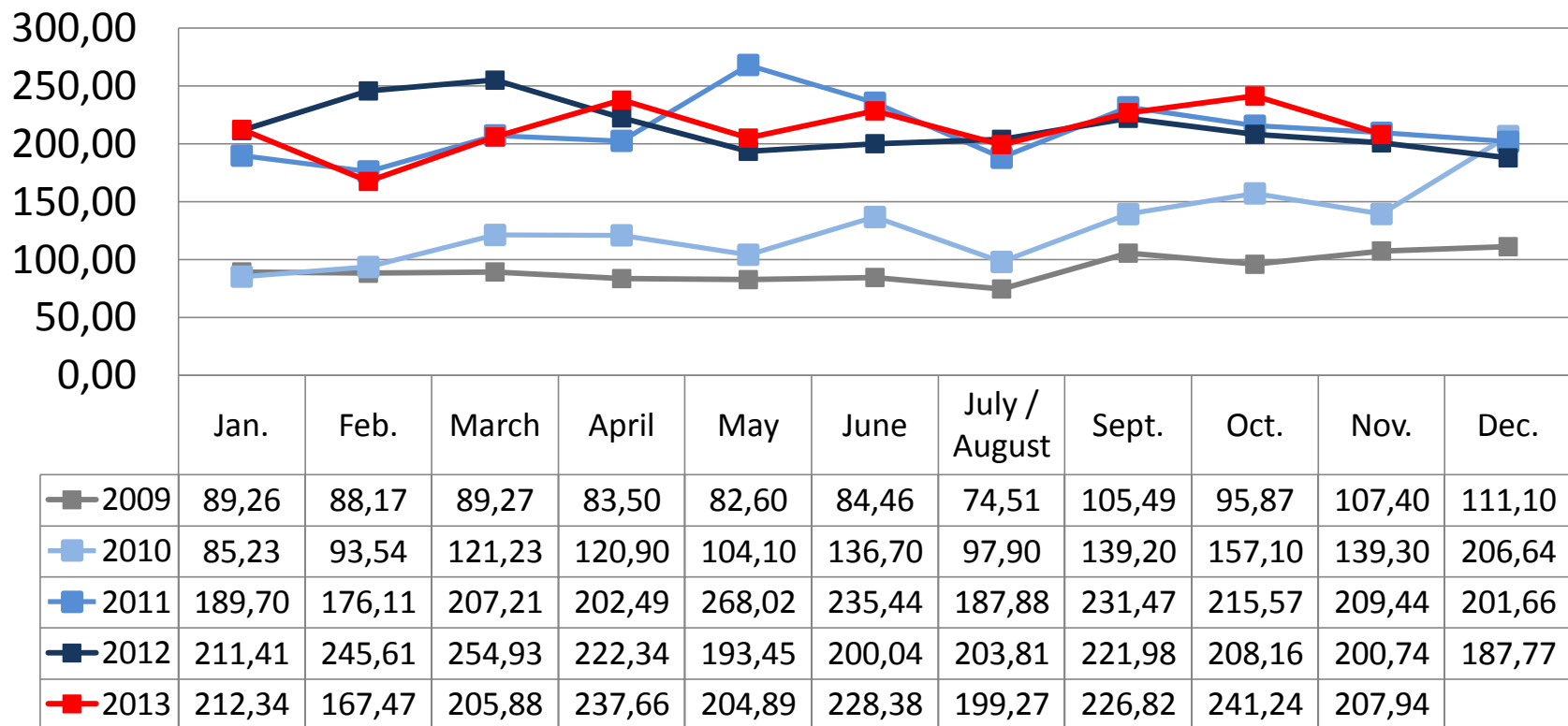
Export Index



	Jan.	Feb.	March	April	May	June	July / August	Sept.	Oct.	Nov.	Dec.
■ 2009	12,85	12,25	10,89	13,30	11,92	14,81	21,50	25,99	26,04	27,88	27,87
■ 2010	26,64	40,80	52,06	30,40	33,59	42,81	40,82	44,84	42,00	42,76	56,41
■ 2011	48,62	46,41	46,92	42,51	52,07	32,89	33,39	33,32	42,08	36,11	32,80
■ 2012	33,35	47,86	50,89	53,37	42,60	46,48	61,13	57,83	41,17	45,07	37,23
■ 2013	47,78	35,99	41,17	41,42	46,65	55,80	47,36	57,97	59,80	58,62	

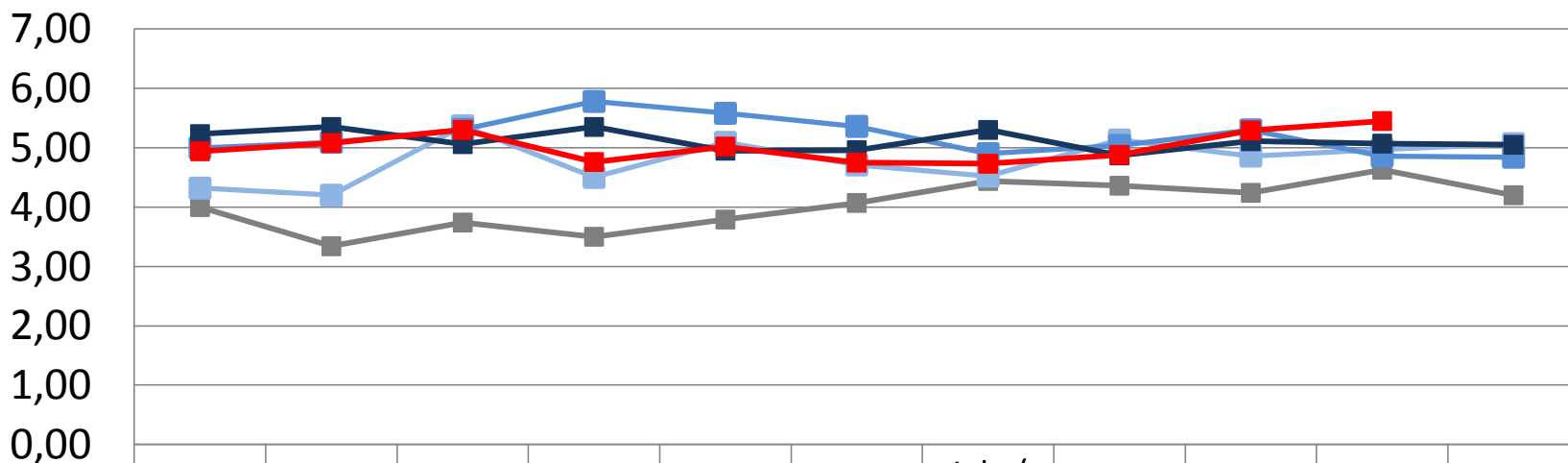
GFIE Index November 2013

Evolution of the global GFIE index (France + Export) between 2008 & 2013



GFIE Index November 2013

Trust Index



	Jan.	Feb.	March	April	May	June	July / August	Sept.	Oct.	Nov.	Dec.
■ 2009	4,00	3,34	3,74	3,50	3,79	4,07	4,44	4,36	4,24	4,63	4,20
■ 2010	4,32	4,20	5,37	4,50	5,09	4,71	4,52	5,13	4,86	4,97	5,07
■ 2011	5,00	5,09	5,31	5,78	5,58	5,36	4,90	5,04	5,30	4,86	4,84
■ 2012	5,23	5,35	5,06	5,35	4,95	4,96	5,30	4,87	5,11	5,07	5,05
■ 2013	4,94	5,08	5,30	4,76	5,02	4,75	4,73	4,88	5,29	5,45	

GFIE Index November 2013

Book Bill

