

GFIE index May2012

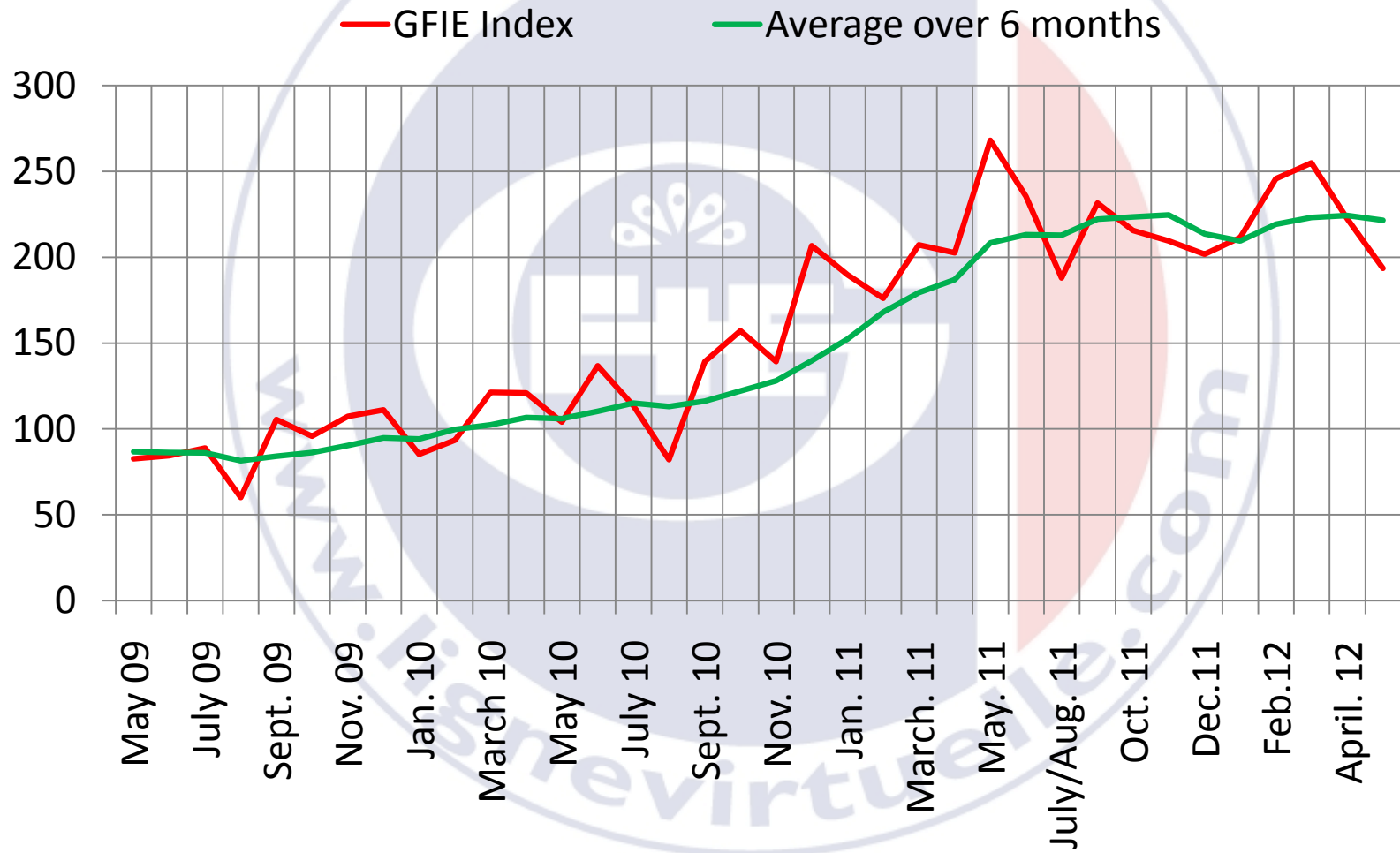
Comments from Mr. Pierre-Jean ALBRIEUX, President of the GFIE :

In May, our general index has fallen significantly again (-13%). Since the physiognomy of May, we were half expecting this result. Yet pretty good news concerns our machines, products and services to production index which has risen compared to April. In these framework conditions, the trust index has of course slightly fallen of course to 4.95. Thus, except for two members, member's comments are not engaging with no forecast for the coming months. After such a poor month for most of us, we couldn't expect to jump for joy; all the more as macroeconomic trends are not encouraging. In the short run, let us hope June index will recoup the May one. Summer holidays are near, this will not be a luxury for us to decompress.

| | | |
|-----------------------------------|-------------------------------------------------------------------|----------------------------------|
| Trust index 4.95 | Index variation over the month of April: -12.99% | Book bill 0.973 |
|-----------------------------------|-------------------------------------------------------------------|----------------------------------|

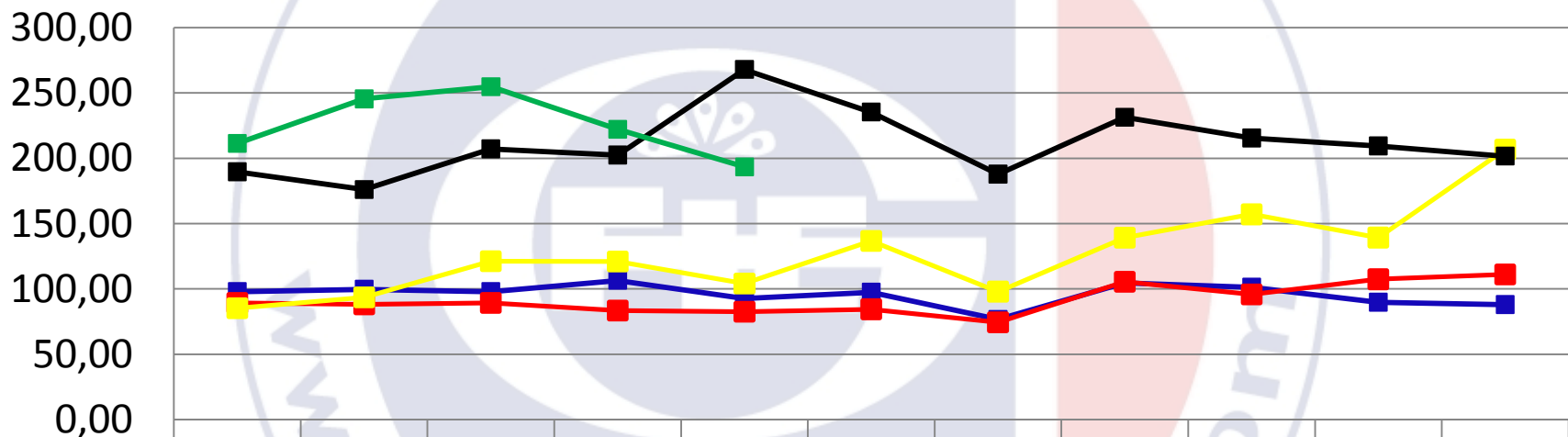
| | May-11 | June-11 | July/Aug -11 | Sept-11 | Oct-11 | Nov-11 | Dec-11 | Jan-12 | Feb-12 | March-12 | April-12 | Mai-12 |
|------------------------------|--------|---------|--------------|---------|--------|--------|--------|--------|--------|----------|----------|--------|
| GFIE Index | 268,02 | 235,44 | 187,88 | 231,47 | 215,57 | 209,44 | 201,66 | 211,41 | 245,61 | 254,93 | 222,34 | 193,45 |
| Average over 6 months | 208,36 | 213,16 | 212,86 | 222,09 | 223,48 | 224,64 | 213,58 | 209,57 | 219,19 | 223,10 | 224,23 | 221,57 |

GFIE index May 2012



GFIE index May 2012

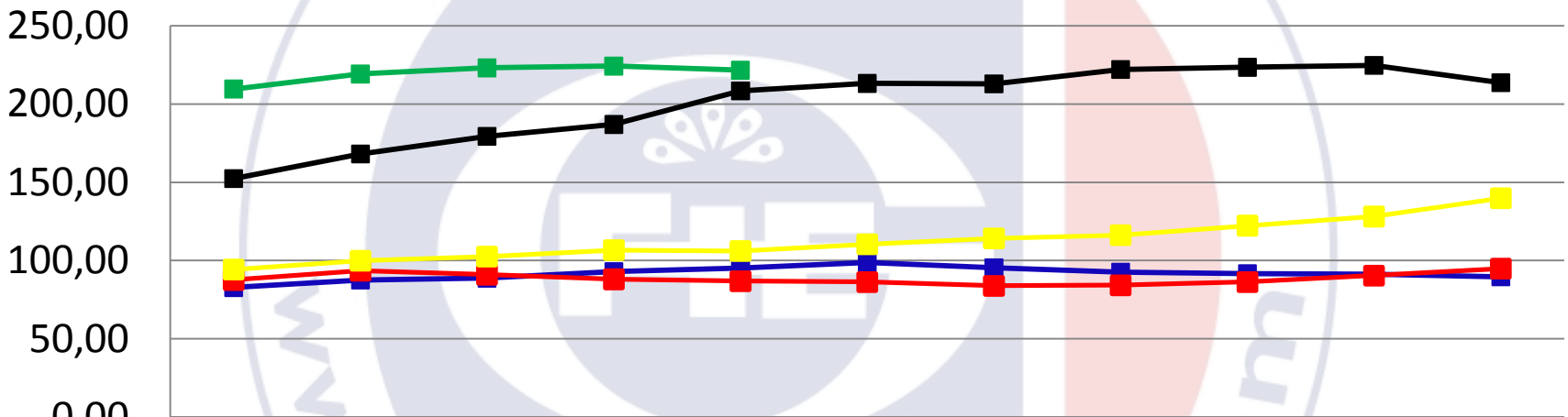
Evolution of the GFIE index between 2008 & 2012



| | Jan. | Feb. | March | April | May | June | July / August | Sept. | Oct. | Nov. | Dec. |
|--------|--------|--------|--------|--------|--------|--------|---------------|--------|--------|--------|--------|
| ■ 2008 | 97,85 | 99,70 | 97,96 | 106,50 | 92,66 | 97,50 | 76,70 | 104,78 | 101,25 | 89,80 | 88,02 |
| ■ 2009 | 89,26 | 88,17 | 89,27 | 83,50 | 82,60 | 84,46 | 74,51 | 105,49 | 95,87 | 107,40 | 111,10 |
| ■ 2010 | 85,23 | 93,54 | 121,23 | 120,90 | 104,10 | 136,70 | 97,90 | 139,20 | 157,10 | 139,30 | 206,64 |
| ■ 2011 | 189,70 | 176,11 | 207,21 | 202,49 | 268,02 | 235,44 | 187,88 | 231,47 | 215,57 | 209,44 | 201,66 |
| ■ 2012 | 211,41 | 245,61 | 254,93 | 222,34 | 193,45 | | | | | | |

GFIE index May 2012

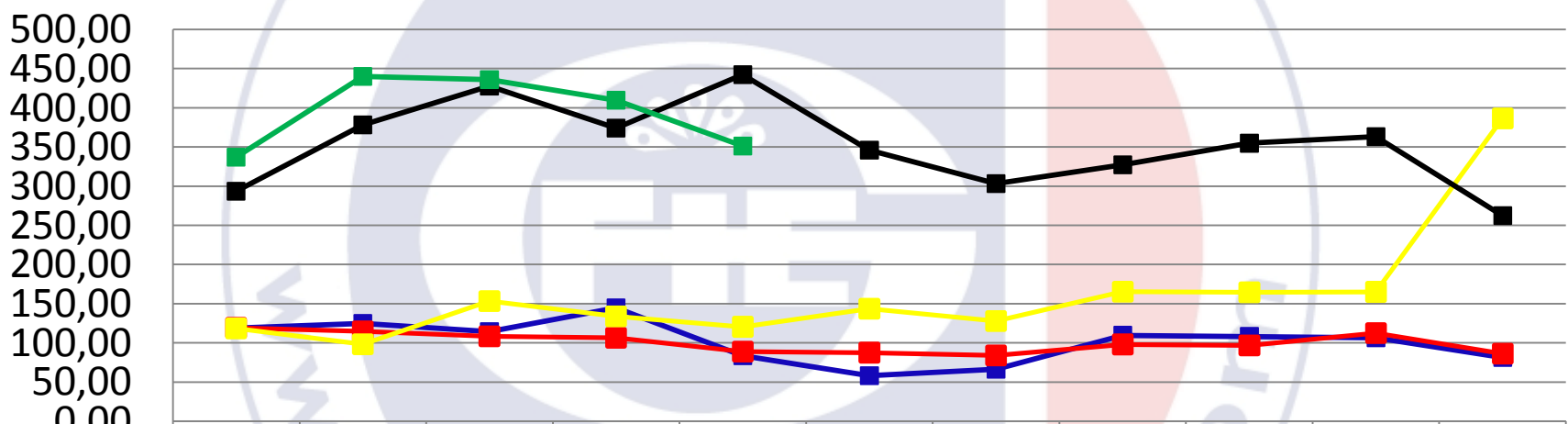
Evolution of the average over 6 months between 2008 & 2012



| | Jan. | Feb. | March | April | May | June | July / August | Sept. | Oct. | Nov. | Dec. |
|------|--------|--------|--------|--------|--------|--------|---------------|--------|--------|--------|--------|
| 2008 | 82,69 | 87,47 | 88,74 | 92,87 | 95,13 | 98,70 | 95,26 | 92,47 | 91,60 | 91,12 | 89,54 |
| 2009 | 87,64 | 93,55 | 90,96 | 88,00 | 86,80 | 86,21 | 83,81 | 84,18 | 86,24 | 90,37 | 94,81 |
| 2010 | 94,20 | 99,77 | 102,40 | 106,57 | 106,02 | 110,28 | 114,07 | 116,12 | 122,15 | 128,02 | 139,67 |
| 2011 | 152,36 | 168,01 | 179,34 | 186,91 | 208,36 | 213,16 | 212,86 | 222,09 | 223,48 | 224,64 | 213,58 |
| 2012 | 209,57 | 219,19 | 223,10 | 224,23 | 221,57 | | | | | | |

GFIE index May 2012

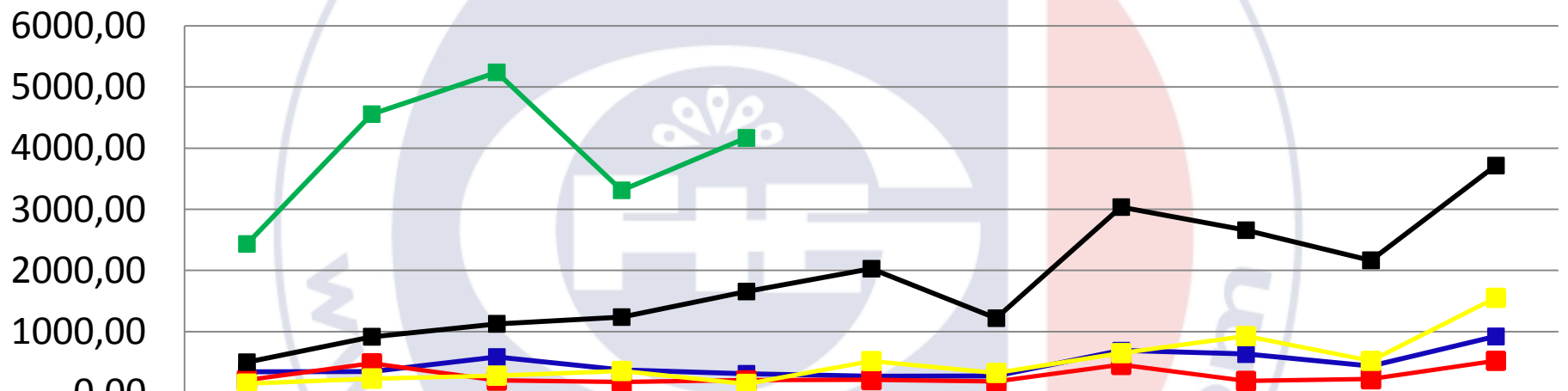
Electronic goods index



| | Jan. | Feb. | March | April | May | June | July / August | Sept. | Oct. | Nov. | Dec. |
|--------|--------|--------|--------|--------|--------|--------|---------------|--------|--------|--------|--------|
| ■ 2008 | 118,86 | 124,98 | 114,33 | 144,72 | 83,52 | 58,08 | 66,39 | 109,65 | 108,12 | 106,61 | 81,28 |
| ■ 2009 | 119,21 | 114,63 | 108,37 | 106,60 | 89,03 | 87,67 | 84,21 | 98,12 | 96,78 | 112,59 | 86,46 |
| ■ 2010 | 118,60 | 98,40 | 153,51 | 133,88 | 120,61 | 143,77 | 128,05 | 165,36 | 164,78 | 165,24 | 386,59 |
| ■ 2011 | 293,50 | 378,44 | 427,96 | 374,30 | 442,53 | 346,23 | 303,38 | 327,33 | 354,95 | 363,44 | 262,48 |
| ■ 2012 | 337,08 | 440,08 | 436,10 | 409,89 | 351,34 | | | | | | |

GFIE index May 2012

Machines, products and services to production index



| | Jan. | Feb. | March | April | May | June | July / August | Sept. | Oct. | Nov. | Dec. |
|--------|--------|--------|--------|--------|--------|--------|---------------|--------|--------|--------|--------|
| ■ 2008 | 339,57 | 343,86 | 584,98 | 373,20 | 309,98 | 268,32 | 274,90 | 689,39 | 633,02 | 434,58 | 920,57 |
| ■ 2009 | 205,66 | 481,87 | 201,23 | 173,66 | 205,11 | 211,62 | 181,69 | 457,35 | 193,35 | 224,16 | 522,48 |
| ■ 2010 | 147,52 | 231,75 | 278,88 | 356,81 | 144,97 | 516,57 | 325,67 | 648,89 | 927,18 | 523,33 | 1552,8 |
| ■ 2011 | 500,98 | 916,13 | 1128,1 | 1238,9 | 1657,6 | 2029,2 | 1221,2 | 3038,5 | 2661,4 | 2167,3 | 3717,0 |
| ■ 2012 | 2434,6 | 4557,2 | 5240,1 | 3312,3 | 4168,7 | | | | | | |

GFIE index May 2012

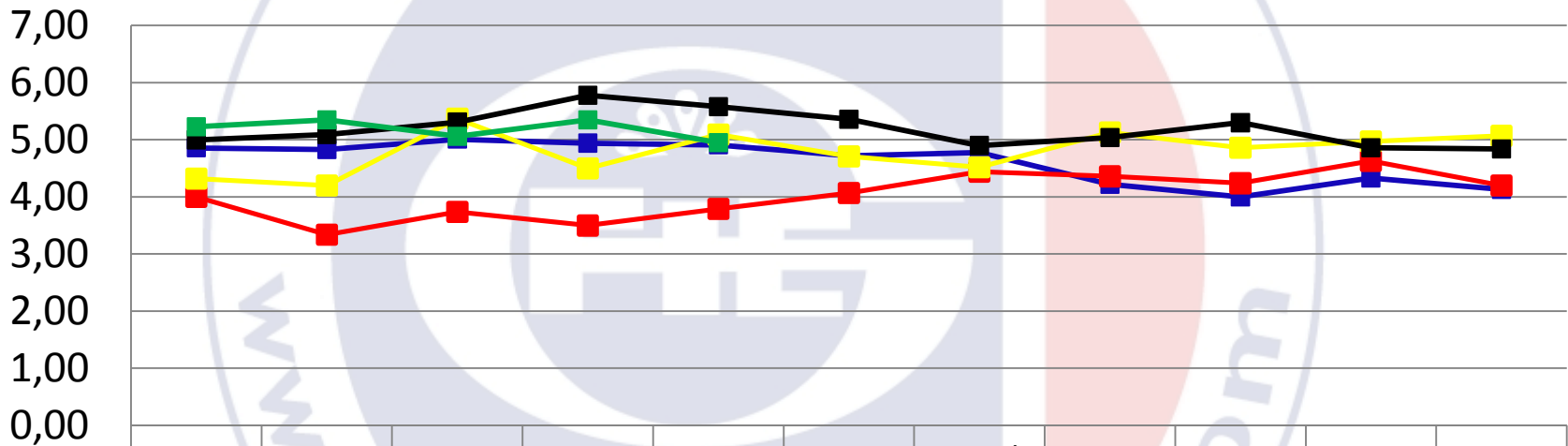
Export index

2008
1st
just

60
50
40
30
20
10
0

GFIE index May 2012

Trust index



| | Jan. | Feb. | March | April | May | June | July / August | Sept. | Oct. | Nov. | Dec. |
|--------|------|------|-------|-------|------|------|---------------|-------|------|------|------|
| ■ 2008 | 4,86 | 4,83 | 5,01 | 4,94 | 4,91 | 4,72 | 4,78 | 4,22 | 4,00 | 4,33 | 4,13 |
| ■ 2009 | 4,00 | 3,34 | 3,74 | 3,50 | 3,79 | 4,07 | 4,44 | 4,36 | 4,24 | 4,63 | 4,20 |
| ■ 2010 | 4,32 | 4,20 | 5,37 | 4,50 | 5,09 | 4,71 | 4,52 | 5,13 | 4,86 | 4,97 | 5,07 |
| ■ 2011 | 5,00 | 5,09 | 5,31 | 5,78 | 5,58 | 5,36 | 4,90 | 5,04 | 5,30 | 4,86 | 4,84 |
| ■ 2012 | 5,23 | 5,35 | 5,06 | 5,35 | 4,95 | | | | | | |

GFIE index May 2012

Book Bill

