

GFIE index March 2012

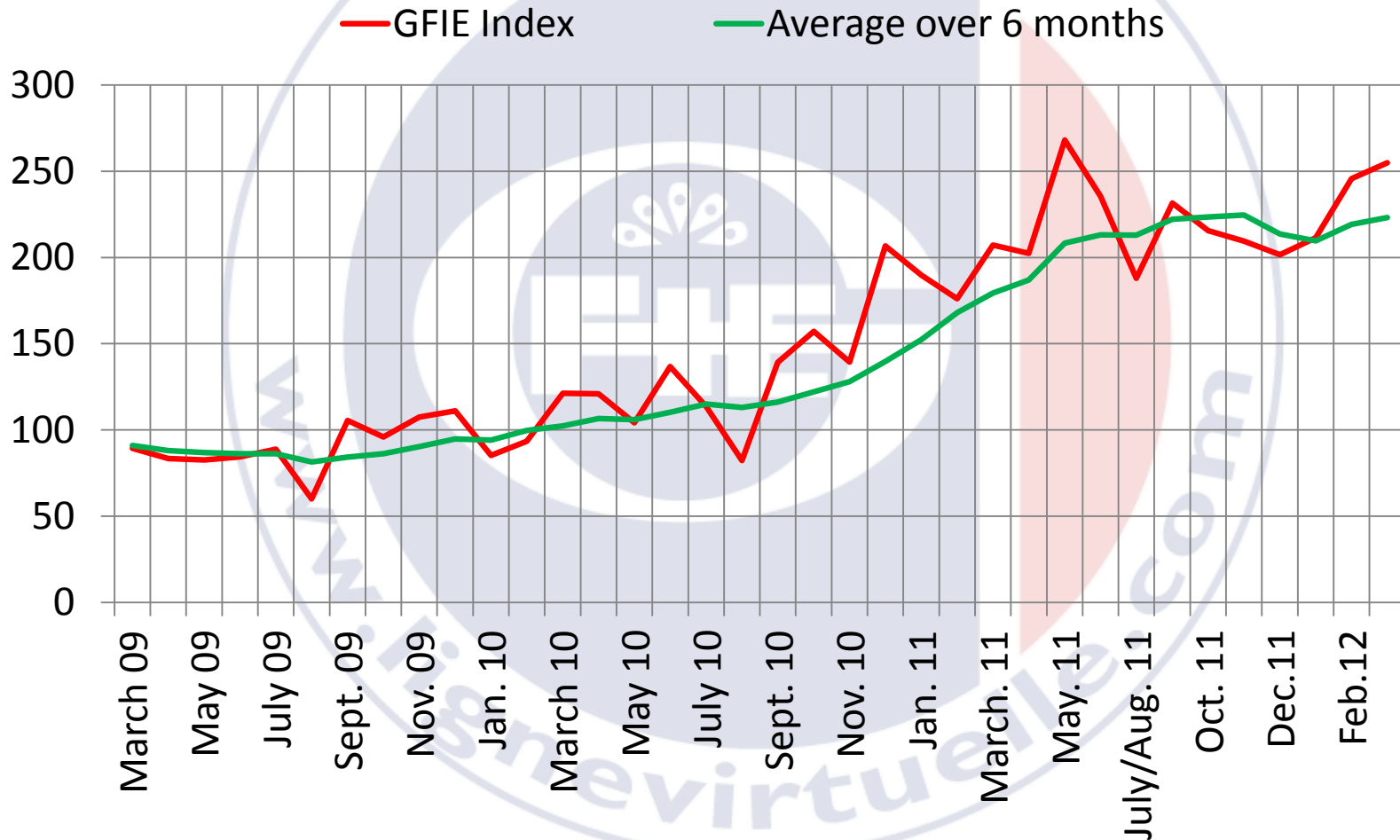
Comments from Mr. Pierre-Jean ALBRIEUX, President of the GFIE :

Concerning our indexes and our overall index, they are slightly rising and higher than 2011, which is not so bad. With regards to our member comments, some of concern signs are coming up. Confidence index, which is relatively high (5.06), is going down. In the short run, uncertainties concerns working hours in the coming weeks: Spring holidays, long weekends all over the month of May and the paid vacation balance. Other disruptions can be added due to the legislative and presidential elections. It is therefore possible that the results of our indexes during the first quarter anticipated a lower activity over April and May. The next indexes will tell us a bit more about this fact. On a medium term, there is one point, which is still positive and encouraging: the high position of our machines, products and services to production index. This just shows that France is still a manufacturing country.

Trust index 5.06	Index variation over the month of February: + 3.79%	Book bill 0.891
-----------------------------------	--	----------------------------------

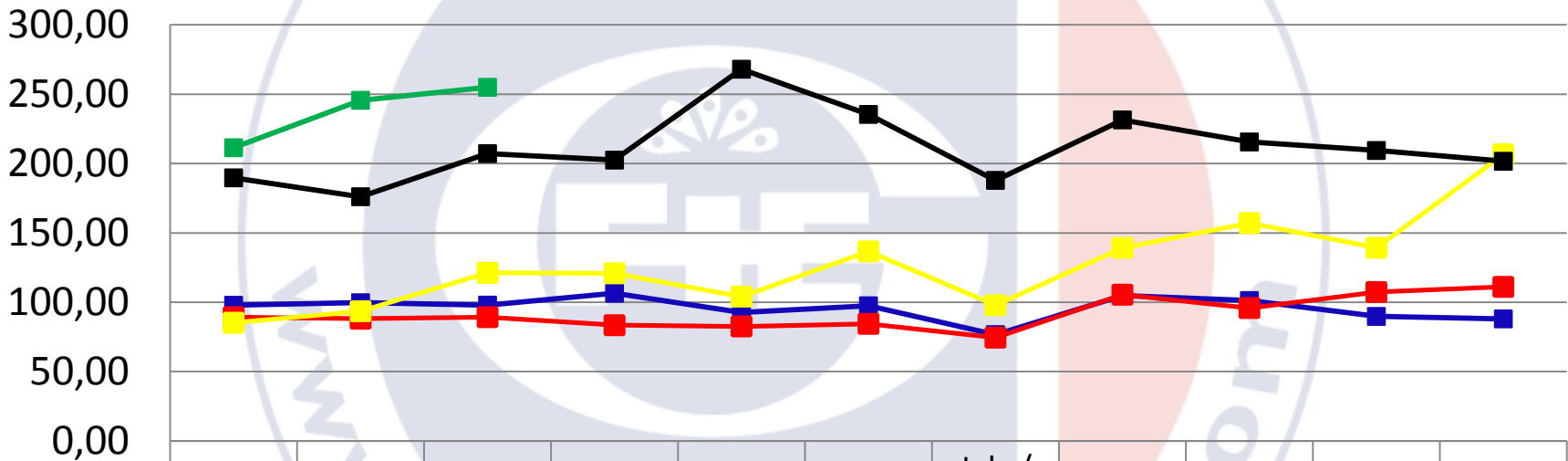
	Mar-11	April-11	May-11	June-11	July/ Aug -11	Sept-11	Oct-11	Nov-11	Dec-11	Jan-12	Feb-12	Mar-12
GFIE Index	207,21	202,49	268,02	235,44	187,88	231,47	215,57	209,44	201,66	211,41	245,61	254,93
Average over 6 months	179,34	186,91	208,36	213,16	212,86	222,09	223,48	224,64	213,58	209,57	219,19	223,10

GFIE index March 2012



GFIE index March 2012

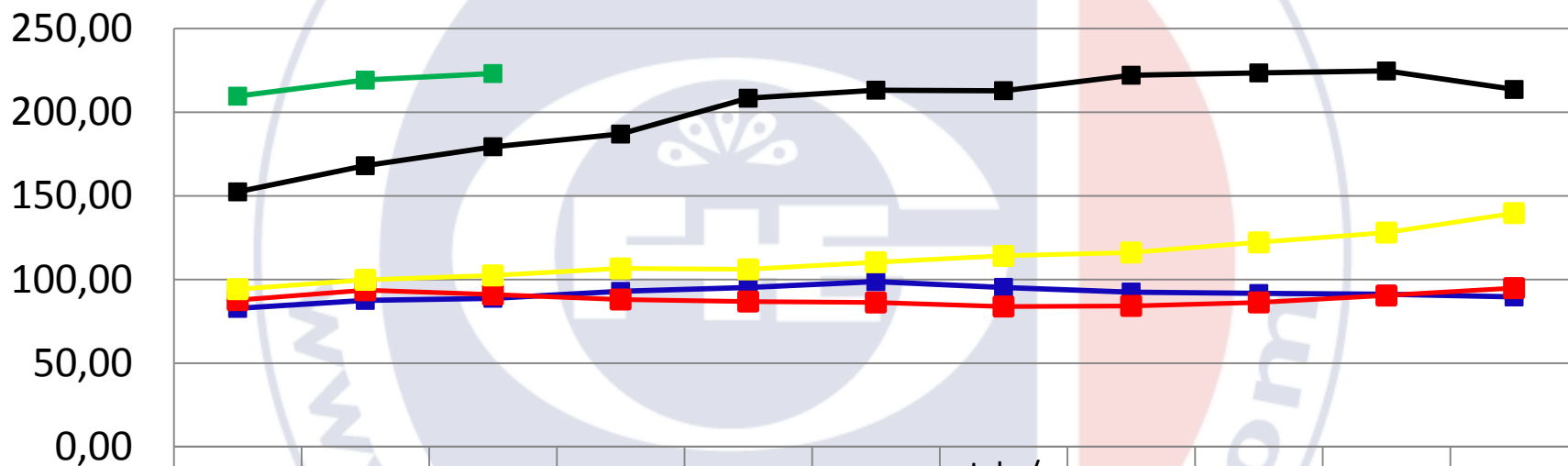
Evolution of the GFIE index between 2008 & 2012



	Jan.	Feb.	March	April	May	June	July / August	Sept.	Oct.	Nov.	Dec.
■ 2008	97,85	99,70	97,96	106,50	92,66	97,50	76,70	104,78	101,25	89,80	88,02
■ 2009	89,26	88,17	89,27	83,50	82,60	84,46	74,51	105,49	95,87	107,40	111,10
■ 2010	85,23	93,54	121,23	120,90	104,10	136,70	97,90	139,20	157,10	139,30	206,64
■ 2011	189,70	176,11	207,21	202,49	268,02	235,44	187,88	231,47	215,57	209,44	201,66
■ 2012	211,41	245,61	254,93								

GFIE index March 2012

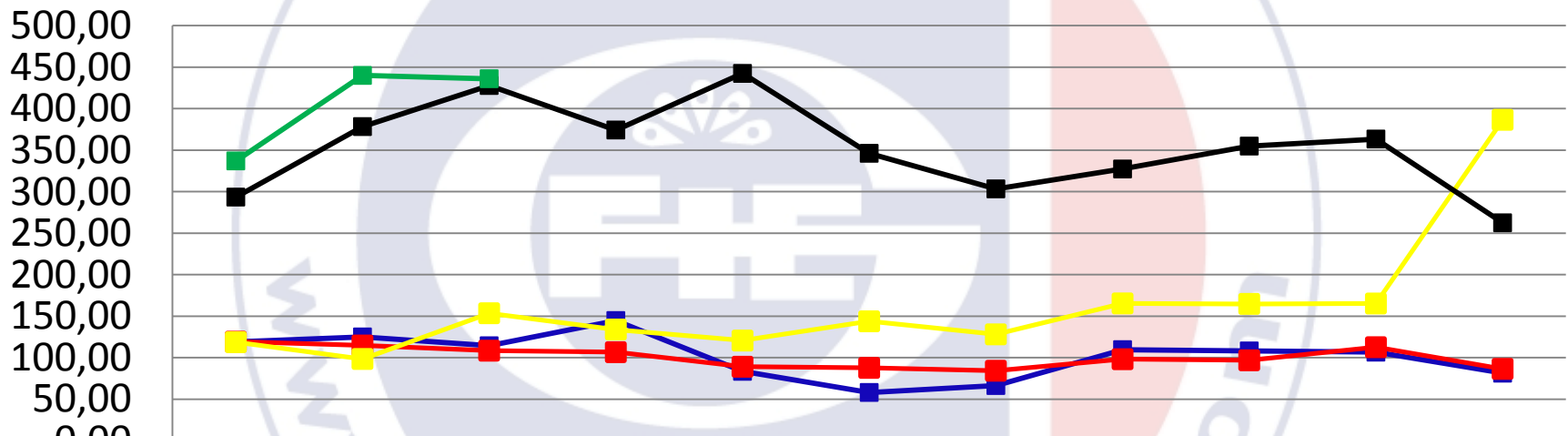
Evolution of the average over 6 months between 2008 & 2012



	Jan.	Feb.	March	April	May	June	July / August	Sept.	Oct.	Nov.	Dec.
■ 2008	82,69	87,47	88,74	92,87	95,13	98,70	95,26	92,47	91,60	91,12	89,54
■ 2009	87,64	93,55	90,96	88,00	86,80	86,21	83,81	84,18	86,24	90,37	94,81
■ 2010	94,20	99,77	102,40	106,57	106,02	110,28	114,07	116,12	122,15	128,02	139,67
■ 2011	152,36	168,01	179,34	186,91	208,36	213,16	212,86	222,09	223,48	224,64	213,58
■ 2012	209,57	219,19	223,10								

GFIE index March 2012

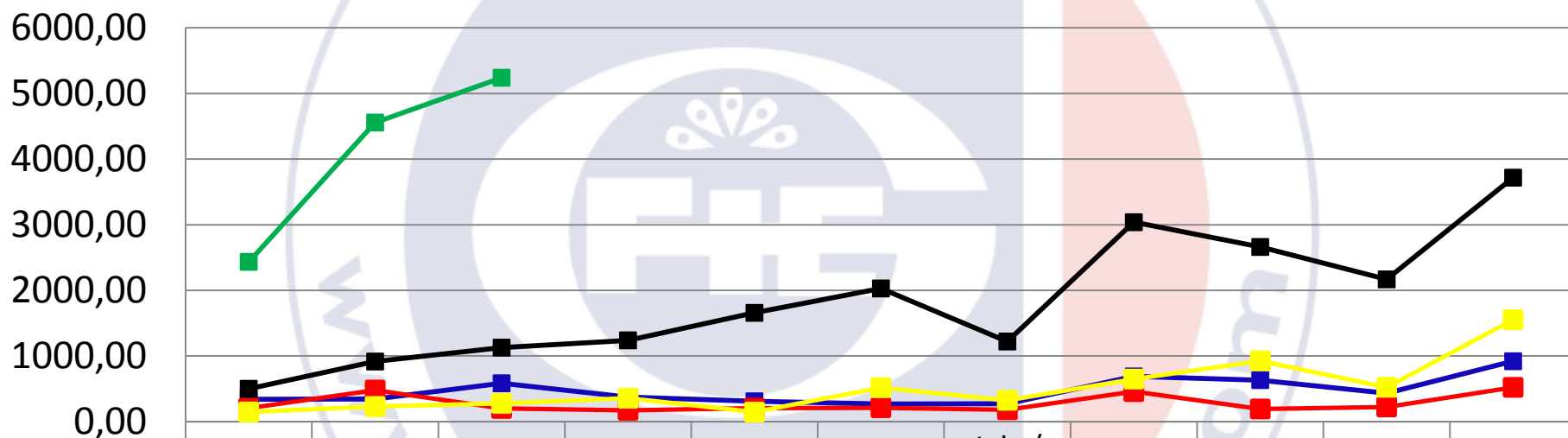
Electronic goods index



	Jan.	Feb.	March	April	May	June	July / August	Sept.	Oct.	Nov.	Dec.
2008	118,86	124,98	114,33	144,72	83,52	58,08	66,39	109,65	108,12	106,61	81,28
2009	119,21	114,63	108,37	106,60	89,03	87,67	84,21	98,12	96,78	112,59	86,46
2010	118,60	98,40	153,51	133,88	120,61	143,77	128,05	165,36	164,78	165,24	386,59
2011	293,50	378,44	427,96	374,30	442,53	346,23	303,38	327,33	354,95	363,44	262,48
2012	337,08	440,08	436,10								

GFIE index March 2012

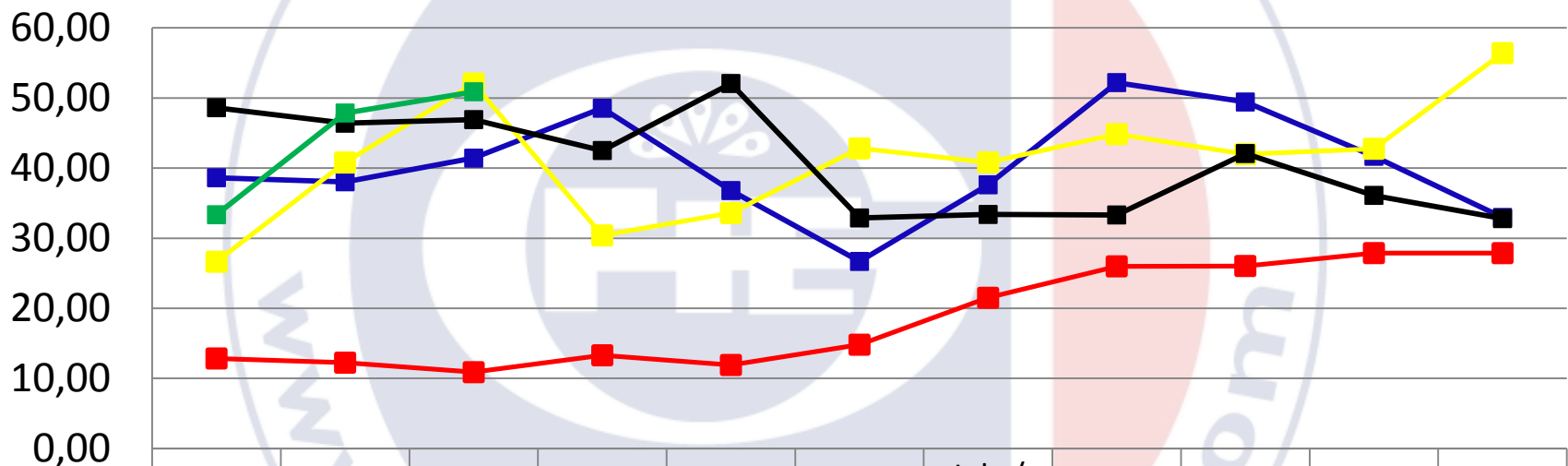
Machines, products and services to production index



	Jan.	Feb.	March	April	May	June	July / August	Sept.	Oct.	Nov.	Dec.
■ 2008	339,57	343,86	584,98	373,20	309,98	268,32	274,90	689,39	633,02	434,58	920,57
■ 2009	205,66	481,87	201,23	173,66	205,11	211,62	181,69	457,35	193,35	224,16	522,48
■ 2010	147,52	231,75	278,88	356,81	144,97	516,57	325,67	648,89	927,18	523,33	1552,84
■ 2011	500,98	916,13	1128,12	1238,90	1657,60	2029,22	1221,25	3038,58	2661,48	2167,33	3717,04
■ 2012	2434,67	4557,23	5240,16								

GFIE index March 2012

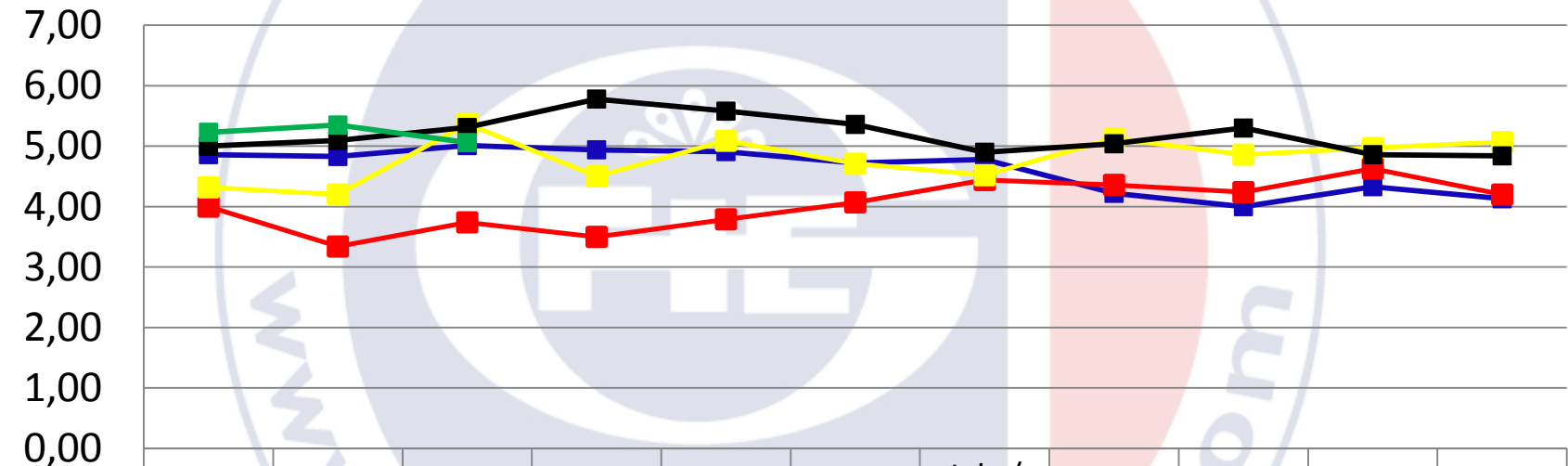
Export index



	Jan.	Feb.	March	April	May	June	July / August	Sept.	Oct.	Nov.	Dec.
■ 2008	38,63	38,05	41,42	48,54	36,80	26,69	37,62	52,20	49,43	41,69	32,96
■ 2009	12,85	12,25	10,89	13,30	11,92	14,81	21,50	25,99	26,04	27,88	27,87
■ 2010	26,64	40,80	52,06	30,40	33,59	42,81	40,82	44,84	42,00	42,76	56,41
■ 2011	48,62	46,41	46,92	42,51	52,07	32,89	33,39	33,32	42,08	36,11	32,80
■ 2012	33,35	47,86	50,89								

GFIE index March 2012

Trust index



	Jan.	Feb.	March	April	May	June	July / August	Sept.	Oct.	Nov.	Dec.
■ 2008	4,86	4,83	5,01	4,94	4,91	4,72	4,78	4,22	4,00	4,33	4,13
■ 2009	4,00	3,34	3,74	3,50	3,79	4,07	4,44	4,36	4,24	4,63	4,20
■ 2010	4,32	4,20	5,37	4,50	5,09	4,71	4,52	5,13	4,86	4,97	5,07
■ 2011	5,00	5,09	5,31	5,78	5,58	5,36	4,90	5,04	5,30	4,86	4,84
■ 2012	5,23	5,35	5,06								

GFIE index March 2012

Book Bill

