

# GFIE index January 2012

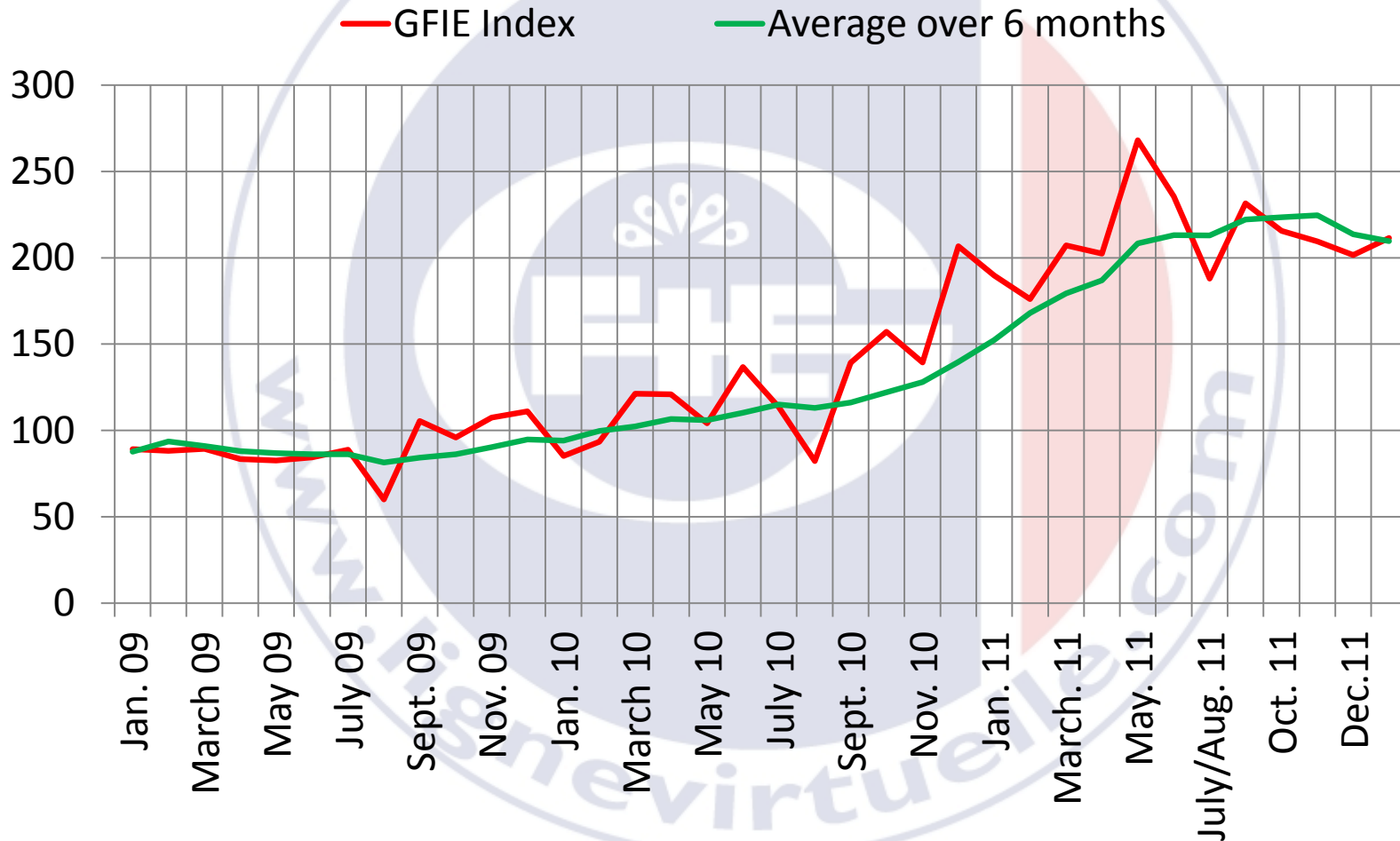
**Comments from Mr. Pierre-Jean ALBRIEUX, President of the GFIE :**

Most of the time, the index of January is below the one of December, since it is traditionally a period of savings following the end of the year ... + 4.83%, if it is not Peru, it is a rather good result. 85% of our members' comments are positive or lukewarm, hence our highly ranged confidence index reaching 5.23. Thus, it appears that everything is not as bad as it may seem, but most of us do not understand why it is so. Is it a surprise considering the contradictory assessment of desindustrialisation, which has been continually repeated during the electoral campaign? Or, let's be optimistic, wouldn't it rather be the confirmation that the pervasion of electronics is such that the latter has become invisible? As our figures confirm it, the fact remains that there is still electronics manufacturing in France.

<b>Trust index</b> <b>5.23</b>	<b>Index variation over the month of December:</b> <b>+ 4.83%</b>	<b>Book bill</b> <b>1.100</b>
-----------------------------------	--	----------------------------------

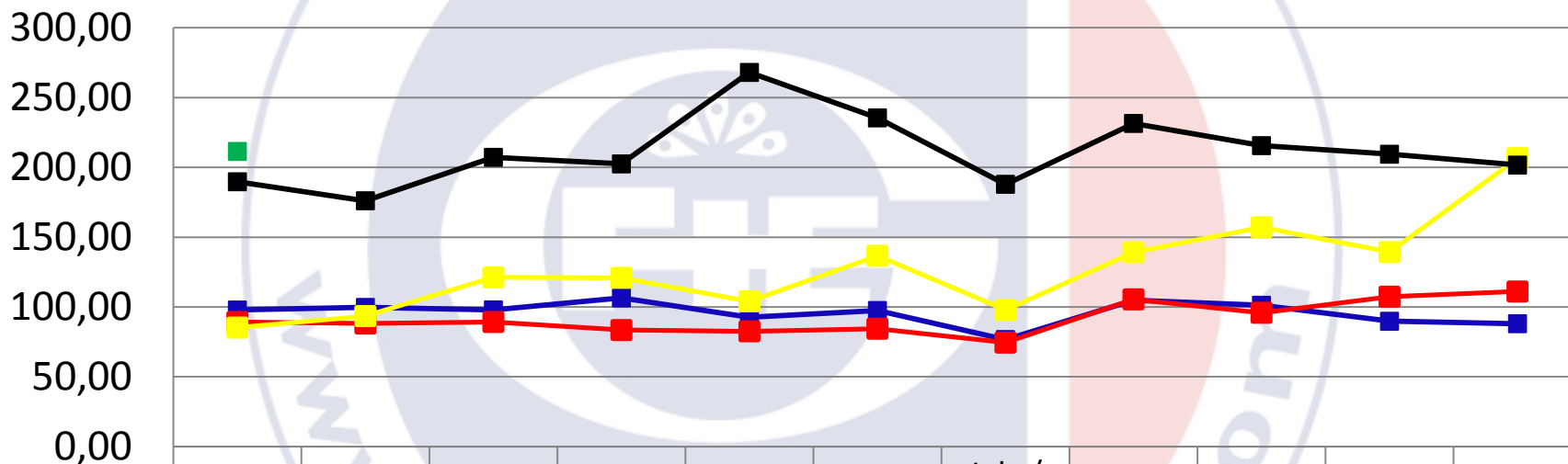
	Jan-11	Feb-11	March-11	April-11	May-11	June-11	July/Aug -11	Sept-11	Oct-11	Nov-11	Dec-11	Jan-12
<b>GFIE Index</b>	189,7	176,11	207,21	202,49	268,02	235,44	187,88	231,47	215,57	209,44	201,66	211,41
<b>Average over 6 months</b>	152,36	168,01	179,34	186,91	208,36	213,16	212,86	222,09	223,48	224,64	213,58	209,57

# GFIE index January 2012



# GFIE index January 2012

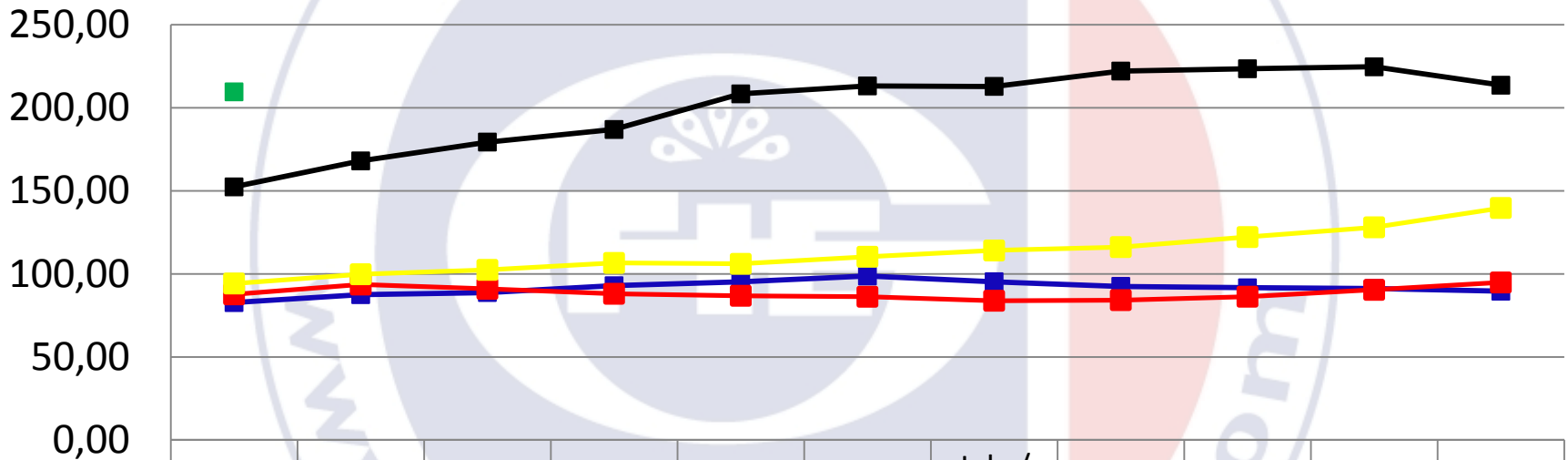
Evolution of the GFIE index between 2008 & 2012



	Jan.	Feb.	March	April	May	June	July / August	Sept.	Oct.	Nov.	Dec.
■ 2008	97,85	99,70	97,96	106,50	92,66	97,50	76,70	104,78	101,25	89,80	88,02
■ 2009	89,26	88,17	89,27	83,50	82,60	84,46	74,51	105,49	95,87	107,40	111,10
■ 2010	85,23	93,54	121,23	120,90	104,10	136,70	97,90	139,20	157,10	139,30	206,64
■ 2011	189,70	176,11	207,21	202,49	268,02	235,44	187,88	231,47	215,57	209,44	201,66
■ 2012	211,41										

# GFIE index January 2012

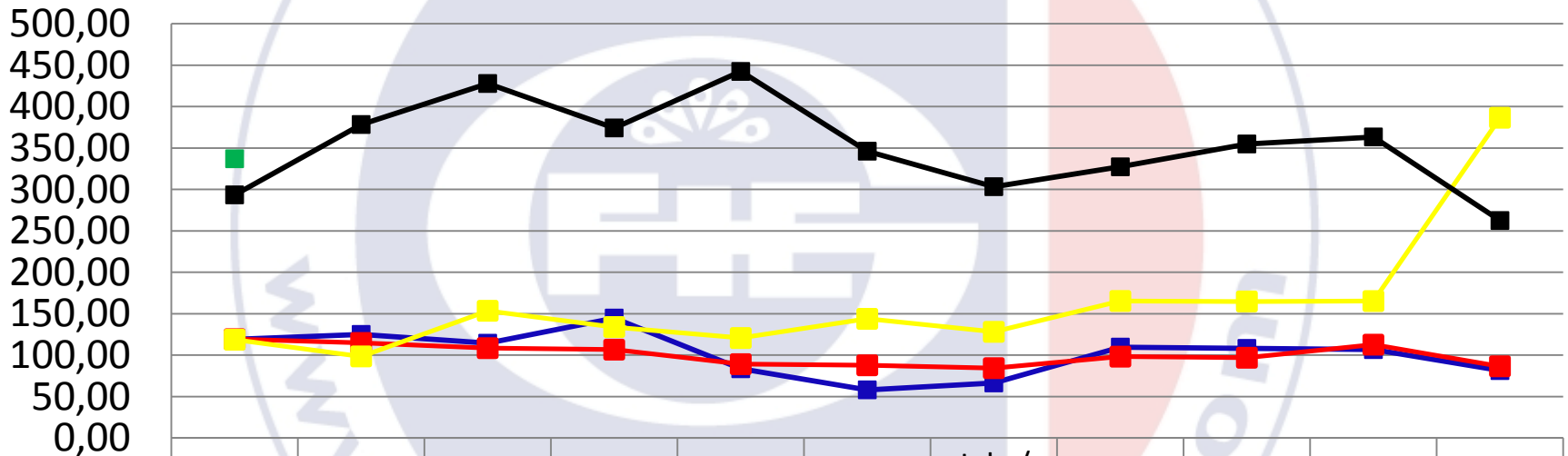
Evolution of the average over 6 months between 2008 & 2012



	Jan.	Feb.	March	April	May	June	July / August	Sept.	Oct.	Nov.	Dec.
■ 2008	82,69	87,47	88,74	92,87	95,13	98,70	95,26	92,47	91,60	91,12	89,54
■ 2009	87,64	93,55	90,96	88,00	86,80	86,21	83,81	84,18	86,24	90,37	94,81
■ 2010	94,20	99,77	102,40	106,57	106,02	110,28	114,07	116,12	122,15	128,02	139,67
■ 2011	152,36	168,01	179,34	186,91	208,36	213,16	212,86	222,09	223,48	224,64	213,58
■ 2012	209,57										

# GFIE index January 2012

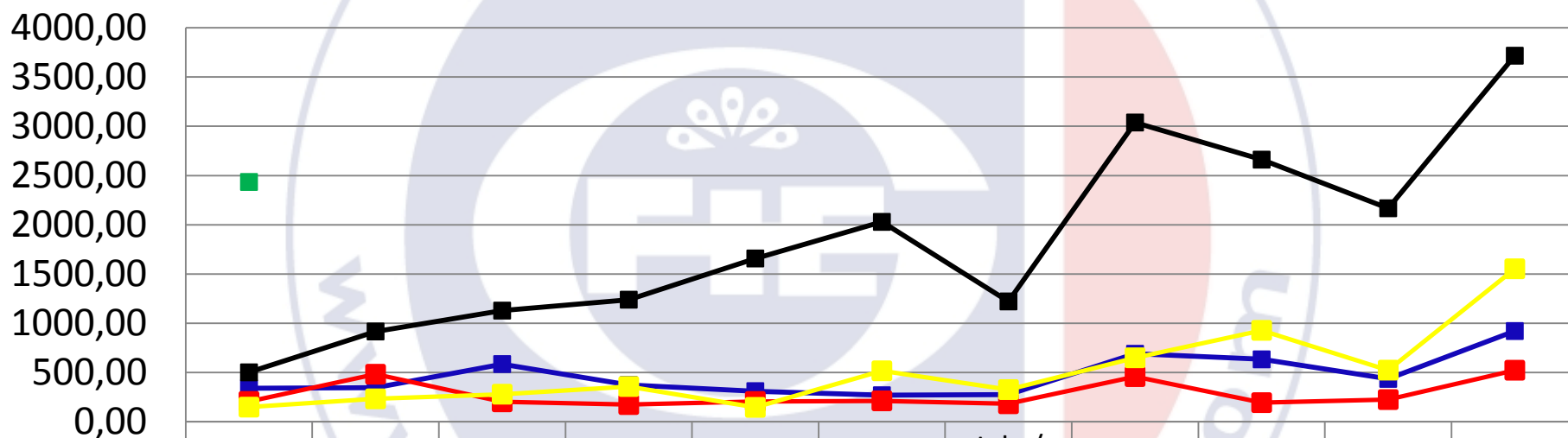
Electronic goods index



	Jan.	Feb.	March	April	May	June	July / August	Sept.	Oct.	Nov.	Dec.
2008	118,86	124,98	114,33	144,72	83,52	58,08	66,39	109,65	108,12	106,61	81,28
2009	119,21	114,63	108,37	106,60	89,03	87,67	84,21	98,12	96,78	112,59	86,46
2010	118,60	98,40	153,51	133,88	120,61	143,77	128,05	165,36	164,78	165,24	386,59
2011	293,50	378,44	427,96	374,30	442,53	346,23	303,38	327,33	354,95	363,44	262,48
2012	337,08										

# GFIE index January 2012

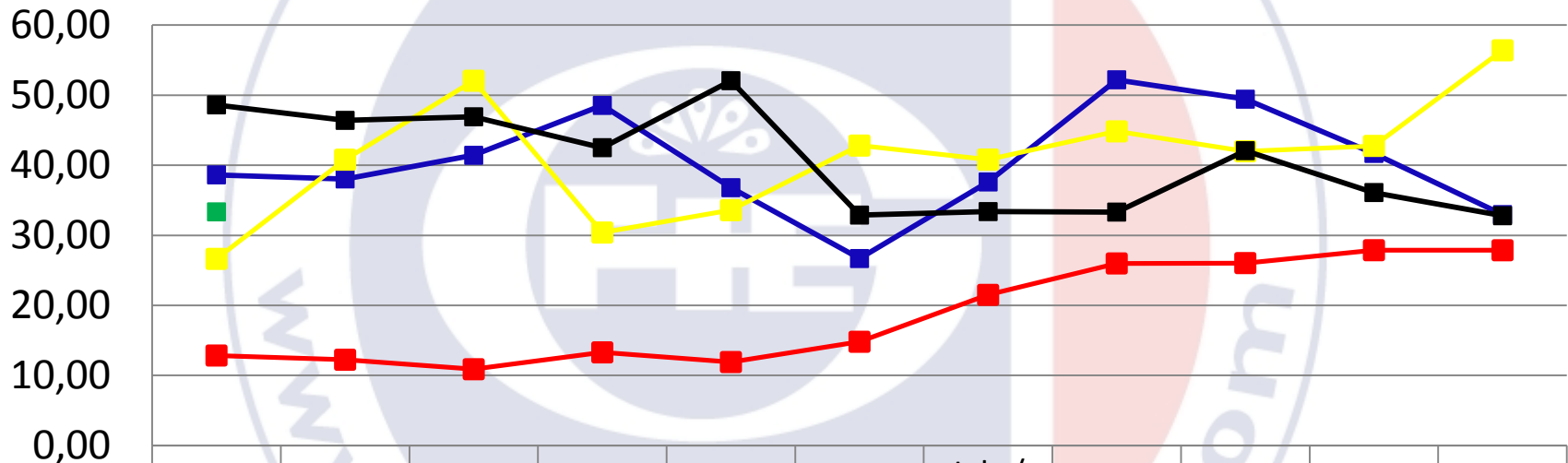
**Machines, products and services to production index**



	Jan.	Feb.	March	April	May	June	July / August	Sept.	Oct.	Nov.	Dec.
■ 2008	339,57	343,86	584,98	373,20	309,98	268,32	274,90	689,39	633,02	434,58	920,57
■ 2009	205,66	481,87	201,23	173,66	205,11	211,62	181,69	457,35	193,35	224,16	522,48
■ 2010	147,52	231,75	278,88	356,81	144,97	516,57	325,67	648,89	927,18	523,33	1552,84
■ 2011	500,98	916,13	1128,12	1238,90	1657,60	2029,22	1221,25	3038,58	2661,48	2167,33	3717,04
■ 2012	2434,67										

# GFIE index January 2012

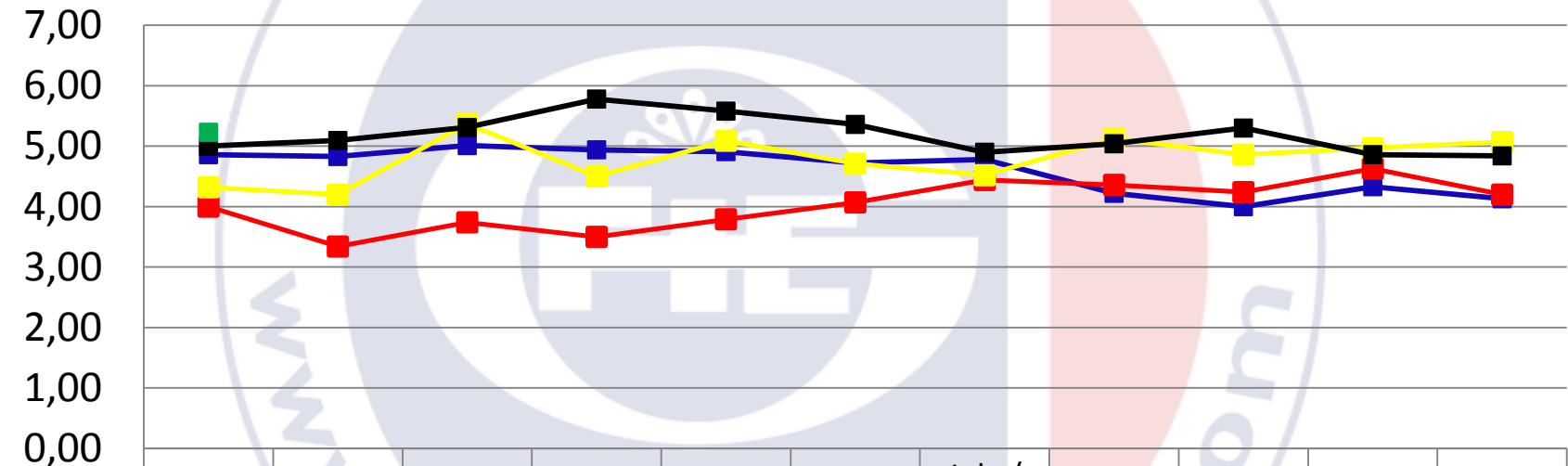
Export index



	Jan.	Feb.	March	April	May	June	July / August	Sept.	Oct.	Nov.	Dec.
■ 2008	38,63	38,05	41,42	48,54	36,80	26,69	37,62	52,20	49,43	41,69	32,96
■ 2009	12,85	12,25	10,89	13,30	11,92	14,81	21,50	25,99	26,04	27,88	27,87
■ 2010	26,64	40,80	52,06	30,40	33,59	42,81	40,82	44,84	42,00	42,76	56,41
■ 2011	48,62	46,41	46,92	42,51	52,07	32,89	33,39	33,32	42,08	36,11	32,80
■ 2012	33,35										

# GFIE index January 2012

Trust index



	Jan.	Feb.	March	April	May	June	July / August	Sept.	Oct.	Nov.	Dec.
■ 2008	4,86	4,83	5,01	4,94	4,91	4,72	4,78	4,22	4,00	4,33	4,13
■ 2009	4,00	3,34	3,74	3,50	3,79	4,07	4,44	4,36	4,24	4,63	4,20
■ 2010	4,32	4,20	5,37	4,50	5,09	4,71	4,52	5,13	4,86	4,97	5,07
■ 2011	5,00	5,09	5,31	5,78	5,58	5,36	4,90	5,04	5,30	4,86	4,84
■ 2012	5,23										



# GFIE index January 2012

**Book Bill**

