



GFIE Index September 2015



Comments from M. Pierre-Jean Albrieux, President of GFIE

« Every cloud has a silver lining ». Let us hope that a good period does not always occurs between two poor periods concerning the October index.

In comparison with the July/August index, the France index rises by 40.24% and the GFIE global index increases by 58.93%. On top of that, the confidence index is up to 5,80. It is a very good start for the latest period. Of course, these strong ratios result from the poor performance during July/August. However the confidence index - which is almost at an historical peak – reveal that there is something else. Electronics, digital technology and all their features (embedded, digital, printed, digitally connected devices, LED, MEMS, plastronics, mecatronics...) carry this with them. GFIE subscribers address every one of them and they are on every market.

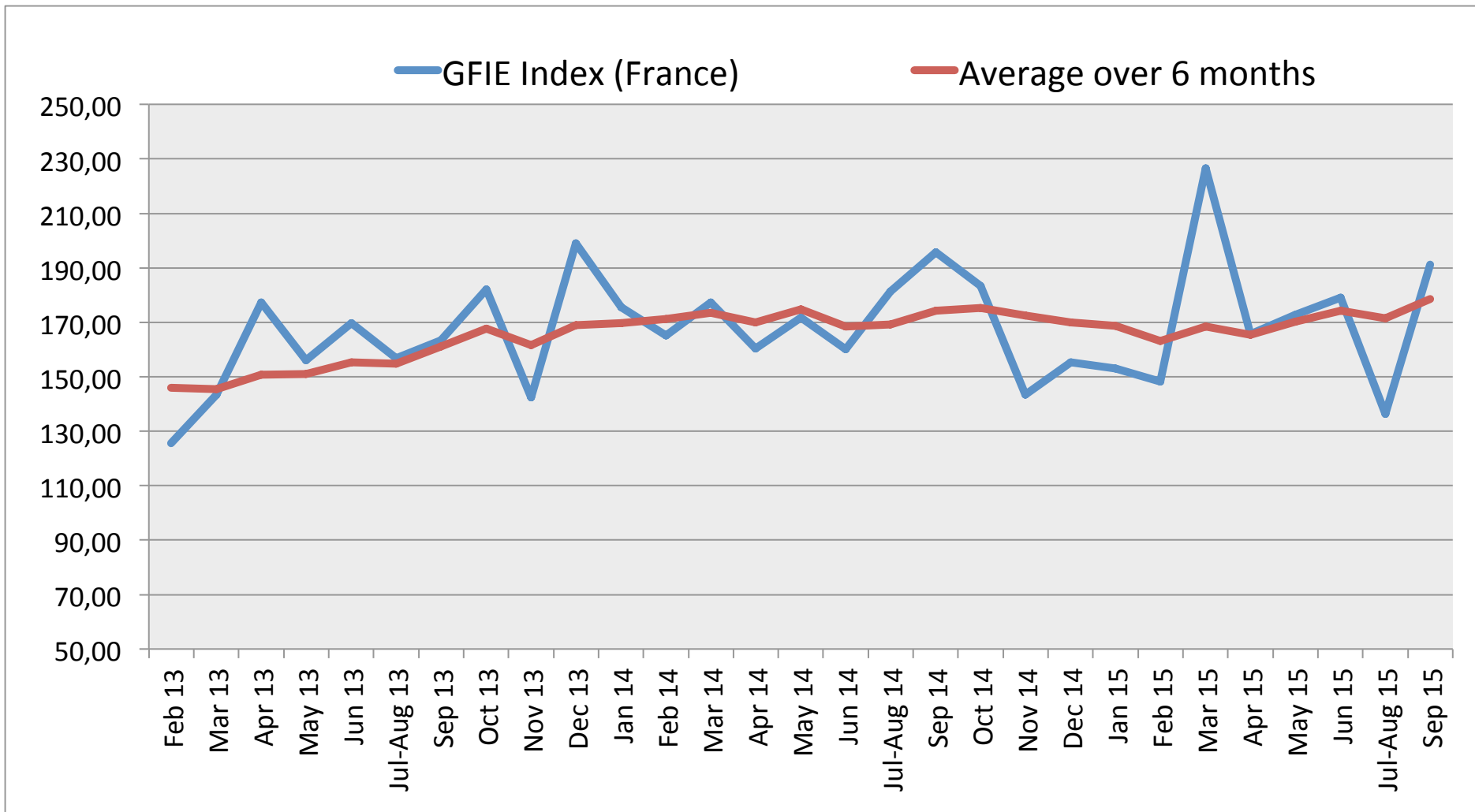
« A patient and courageous man creates his own happiness ».

Trust Index	France Index variation over July/August 2015	BookBill
5,80	+40,24%	0,90

	Sep 14	Oct 14	Nov 14	Dec 14	Jan 15	Feb 15	Mar 15	Apr 15	May 15	Jun 15	Jul-A 15	Sep 15
France GFIE Index	195,74	183,30	143,44	155,29	153,10	148,17	226,60	165,75	172,82	178,97	136,34	191,21
Average over 6 months	174,37	175,39	172,58	169,84	168,69	163,17	168,32	165,39	170,29	174,24	171,44	178,62

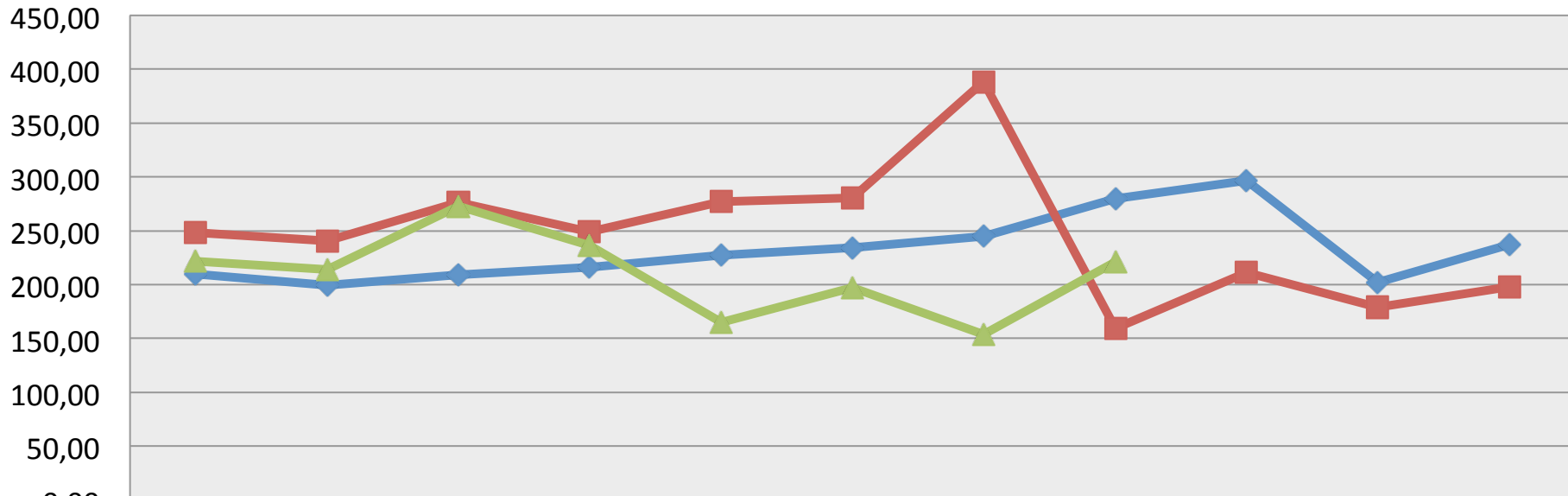


GFIE Index September 2015



GFIE Index September 2015

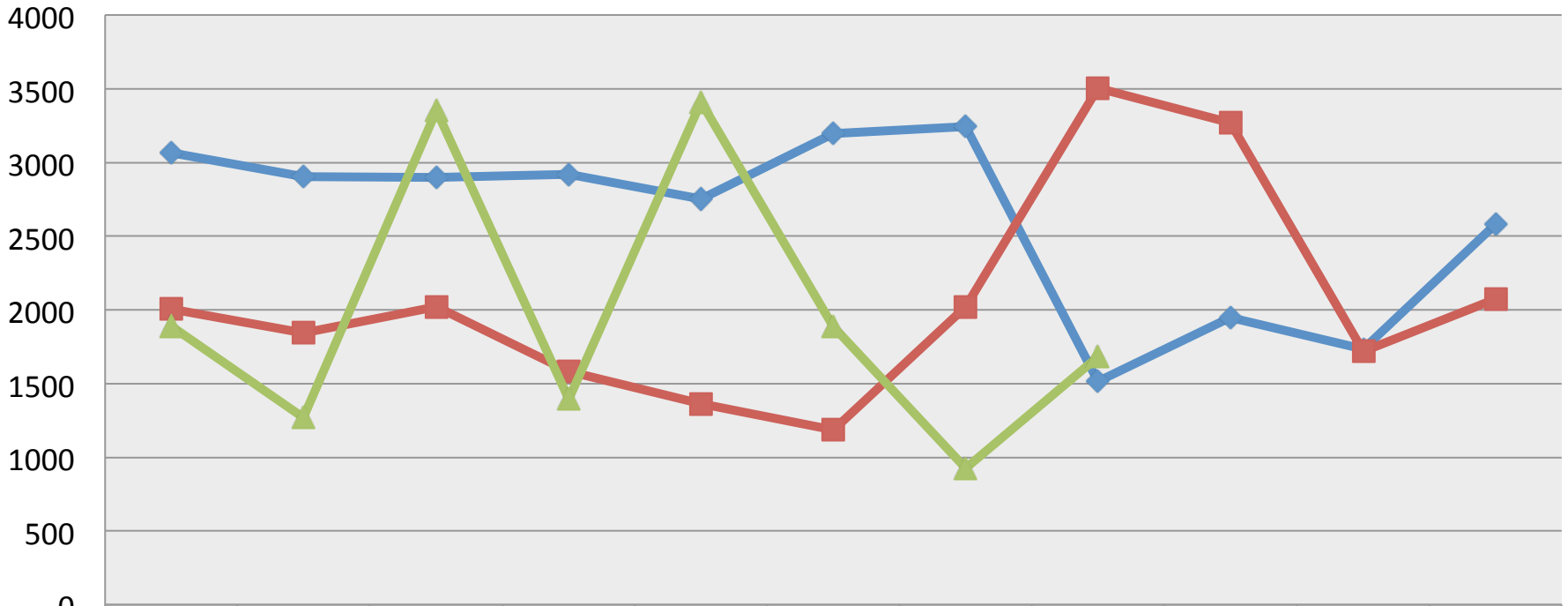
Electronic Goods, Tools and Equipment (<5 000€) Index (France)



	Jan	Feb	Mar	Apr	May	Jun	Jul-Aug	Sept	Oct	Nov	Dec
◆ 2013	210,02	199,46	209,13	215,82	227,22	234,09	244,94	279,53	296,72	202,12	236,92
■ 2014	248,13	240,60	276,00	249,13	277,02	280,86	388,62	159,30	211,56	179,14	197,64
▲ 2015	221,54	213,82	272,97	236,20	164,71	197,42	153,75	221,13			

GFIE Index September 2015

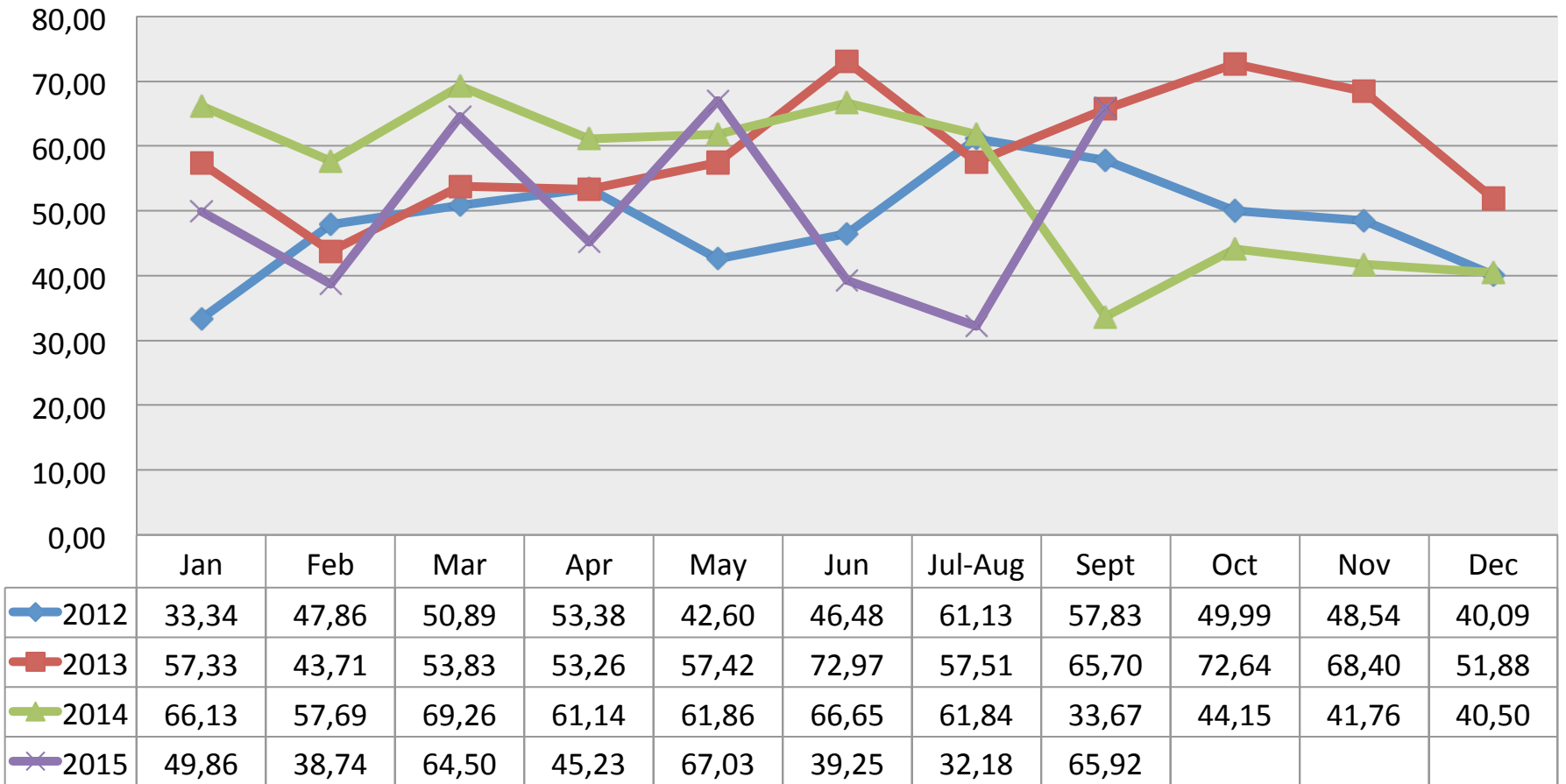
Machines, Products and Services to production Index (France)



	Jan	Feb	Mar	Apr	May	Jun	Jul-Aug	Sept	Oct	Nov	Dec
◆ 2013	3064	2906	2899	2917	2753	3199	3245	1515	1946	1735	2578
■ 2014	2006	1845	2021	1584	1361	1185	2024	3506	3270	1718	2072
▲ 2015	1889	1271	3352	1393	3410	1883	926	1680			

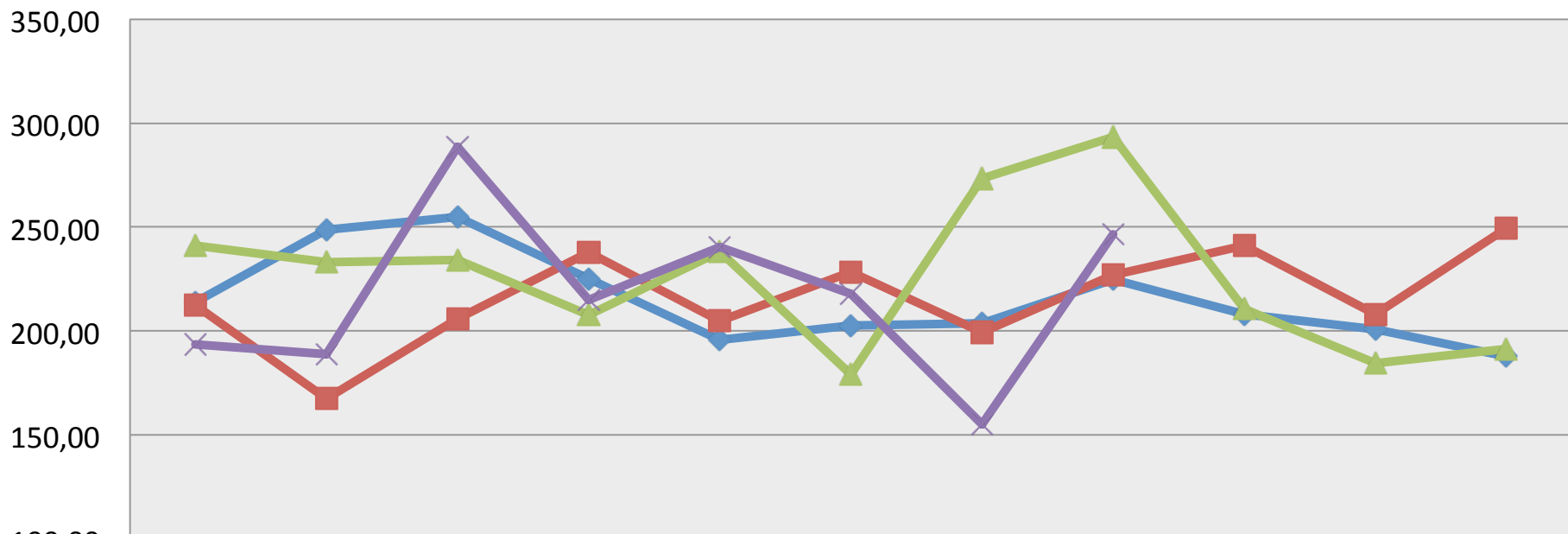
GFIE Index September 2015

Export Index



GFIE Index September 2015

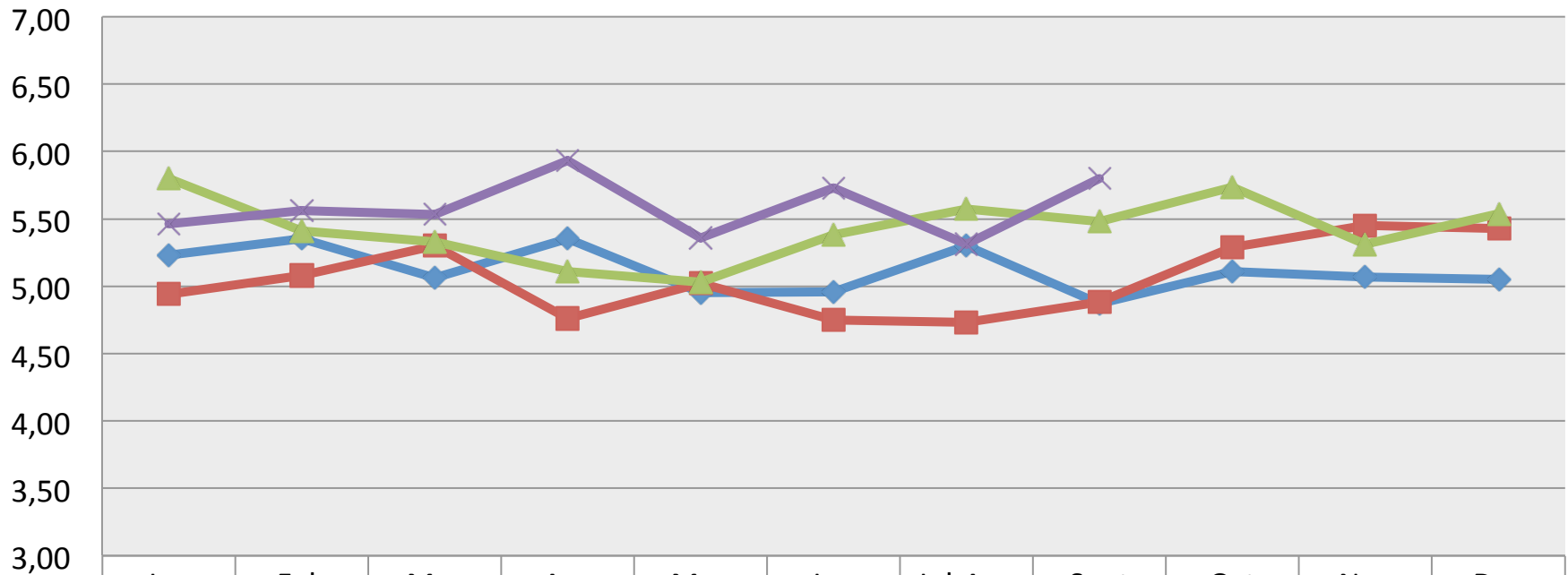
Global GFIE Index (France + Export)



	Jan	Feb	Mar	Apr	May	Jun	Jul-Aug	Sept	Oct	Nov	Dec
◆ 2012	214,05	248,69	254,93	225,13	195,88	202,54	203,81	224,76	208,16	200,74	187,77
■ 2013	212,34	167,47	205,88	237,66	204,89	228,38	199,27	226,82	241,24	207,94	249,58
▲ 2014	241,27	233,14	234,25	207,82	238,08	179,12	273,33	293,37	210,55	184,61	191,46
✕ 2015	193,67	189,05	288,52	215,16	240,20	217,82	155,07	246,45			

GFIE Index September 2015

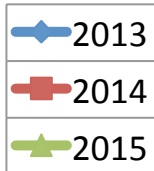
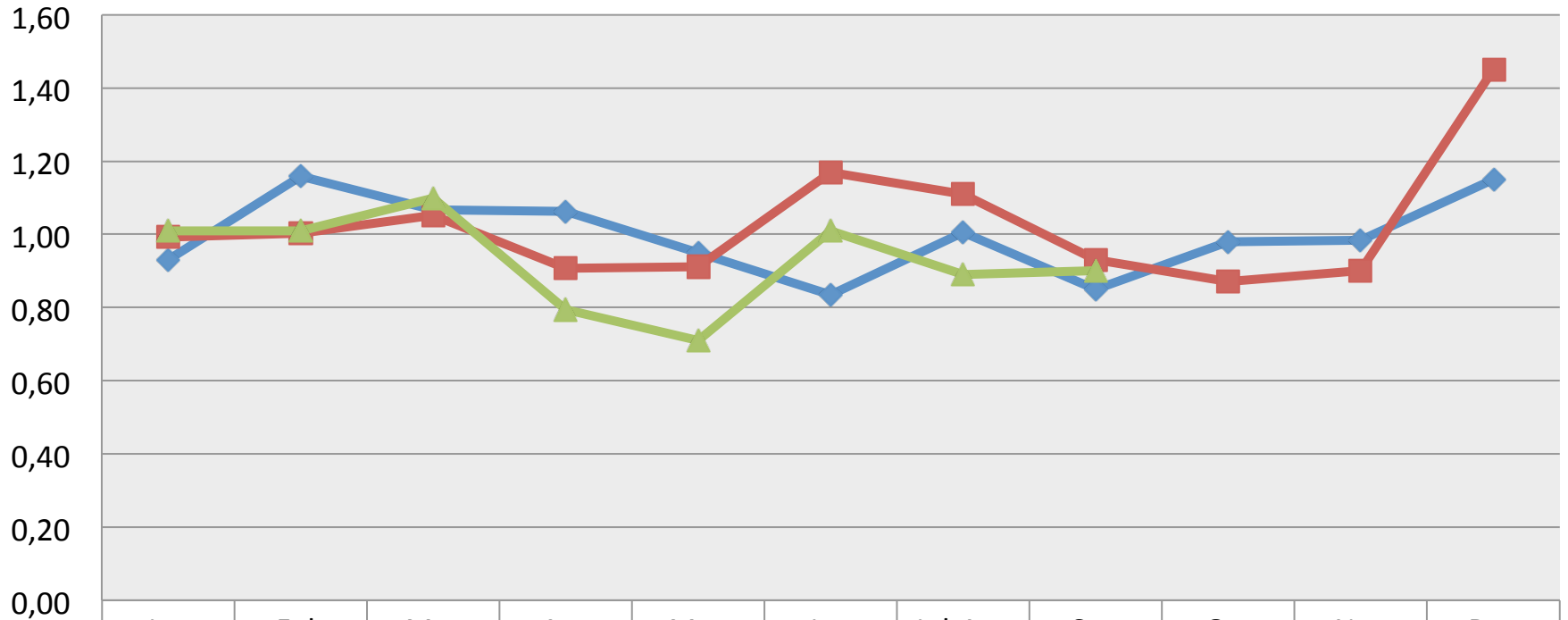
Trust Index



	Jan	Feb	Mar	Apr	May	Jun	Jul-Aug	Sept	Oct	Nov	Dec
◆ 2012	5,23	5,35	5,06	5,35	4,95	4,96	5,30	4,87	5,11	5,07	5,05
■ 2013	4,94	5,08	5,30	4,76	5,02	4,75	4,73	4,88	5,29	5,45	5,43
▲ 2014	5,80	5,41	5,33	5,11	5,03	5,38	5,57	5,48	5,74	5,31	5,54
✕ 2015	5,46	5,56	5,53	5,93	5,36	5,73	5,31	5,80			

GFIE Index September 2015

Book Bill



	Jan	Feb	Mar	Apr	May	Jun	Jul-Aug	Sep	Oct	Nov	Dec
2013	0,93	1,16	1,07	1,06	0,95	0,83	1,01	0,85	0,98	0,99	1,15
2014	0,99	1,00	1,05	0,91	0,91	1,17	1,11	0,93	0,87	0,90	1,45
2015	1,01	1,01	1,10	0,79	0,71	1,01	0,89	0,90			