



# GFIE Index October 2015



## Comments from M. Pierre-Jean Albrieux, President of GFIE

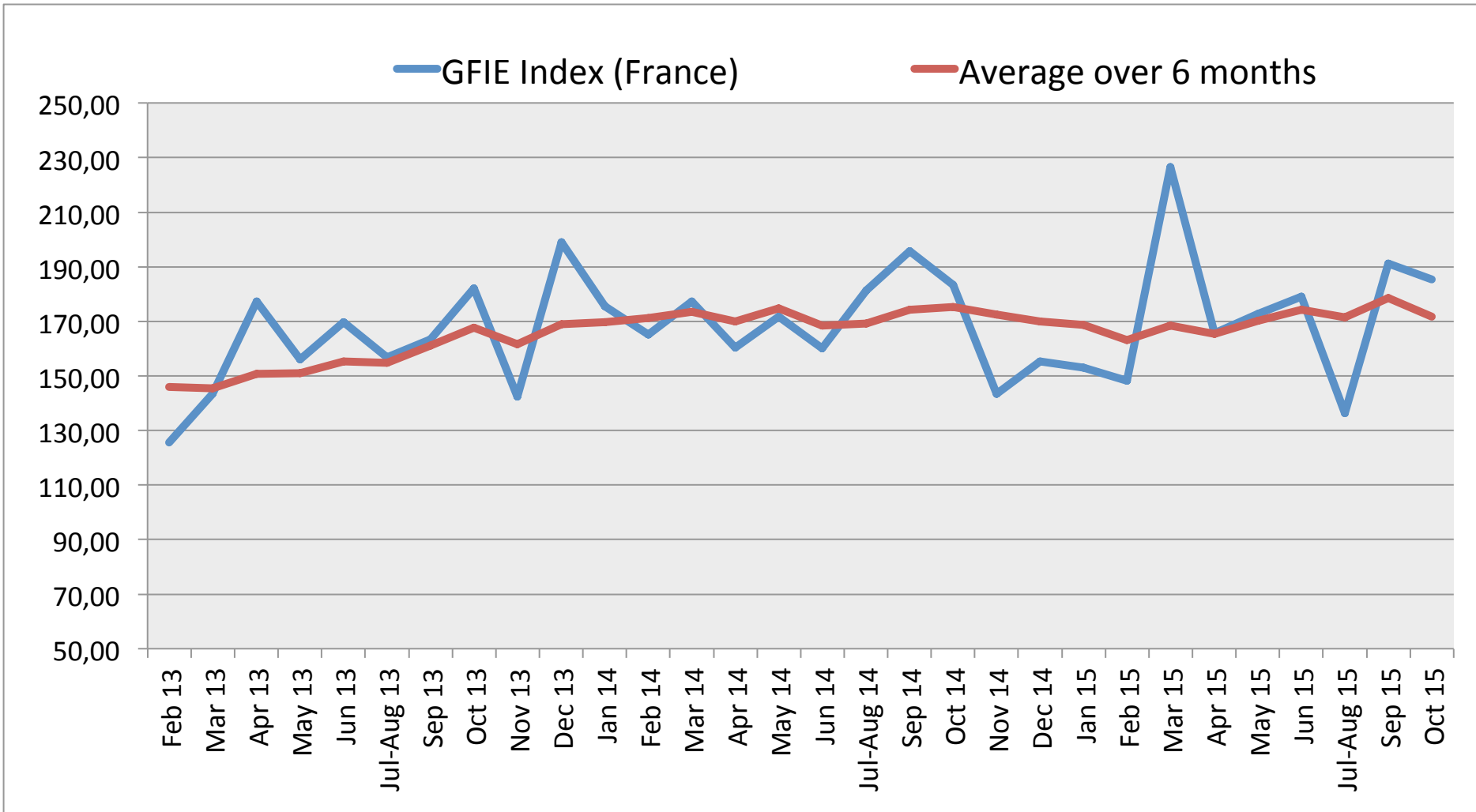
In the wake of a very strong September index compared with July/August, the October index is slightly weaker. -3% for the France index, -9% for the global GFIE index and the confidence index goes back to 5,31. There is no need to worry, though. The decrease remains low and the global October index is higher than the average of the last three years.

One should notice the same significant progression of the machines & services index as the September one.

Trust Index				France Index variation over September 2015					BookBill			
5,31				-3,03%					1,506			
	Oct 14	Nov 14	Dec 14	Jan 15	Feb 15	Mar 15	Apr 15	May 15	Jun 15	Jul-A 15	Sep 15	Oct 15
France GFIE Index	183,30	143,44	155,29	153,10	148,17	226,60	165,75	172,82	178,97	136,34	191,21	185,42
Average over 6 months	175,39	172,58	169,84	168,69	163,17	168,32	165,39	170,29	174,24	171,44	178,62	171,75

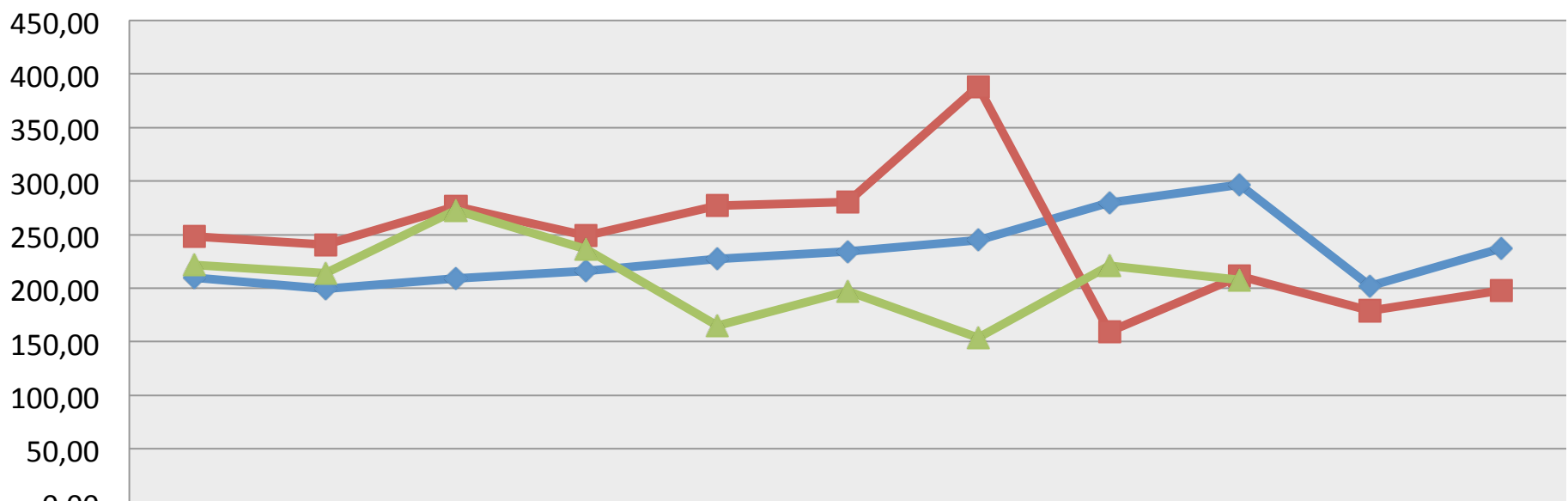


# GfIE Index October 2015



# GFIE Index October 2015

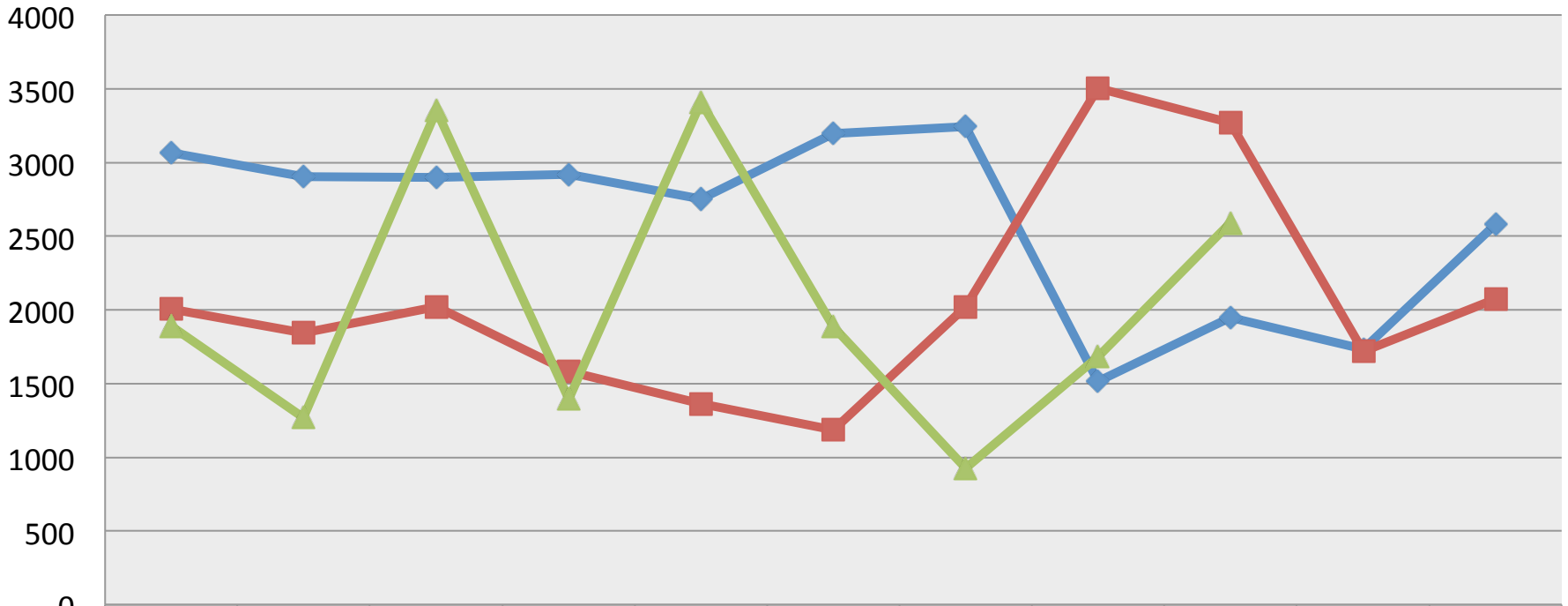
**Electronic Goods, Tools and Equipment (<5 000€) Index (France)**



	Jan	Feb	Mar	Apr	May	Jun	Jul-Aug	Sept	Oct	Nov	Dec
◆ 2013	210,02	199,46	209,13	215,82	227,22	234,09	244,94	279,53	296,72	202,12	236,92
■ 2014	248,13	240,60	276,00	249,13	277,02	280,86	388,62	159,30	211,56	179,14	197,64
▲ 2015	221,54	213,82	272,97	236,20	164,71	197,42	153,75	221,13	207,46		

# GFIE Index October 2015

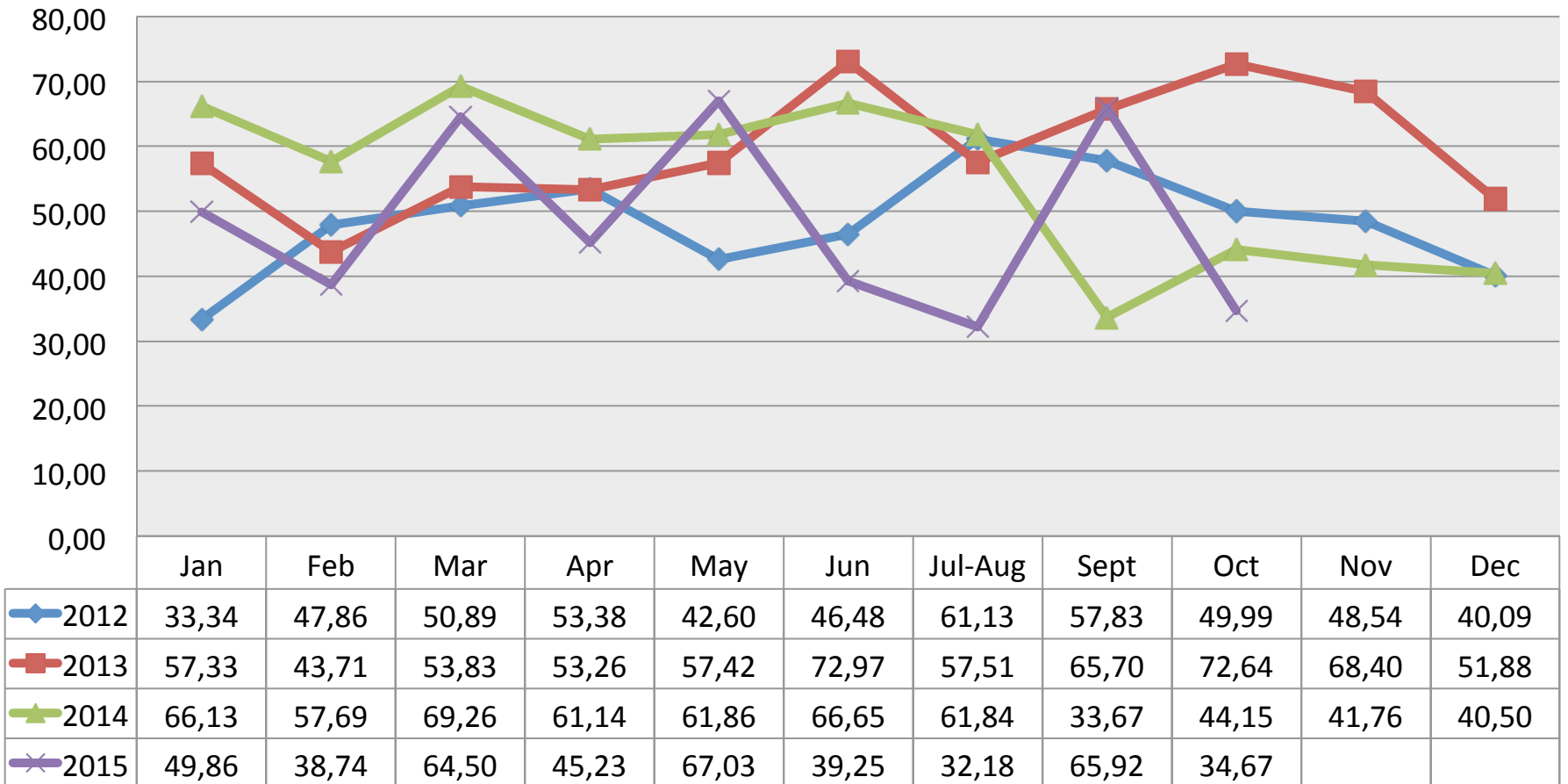
**Machines, Products and Services to production Index (France)**



	Jan	Feb	Mar	Apr	May	Jun	Jul-Aug	Sept	Oct	Nov	Dec
◆ 2013	3064	2906	2899	2917	2753	3199	3245	1515	1946	1735	2578
■ 2014	2006	1845	2021	1584	1361	1185	2024	3506	3270	1718	2072
▲ 2015	1889	1271	3352	1393	3410	1883	926	1680	2592		

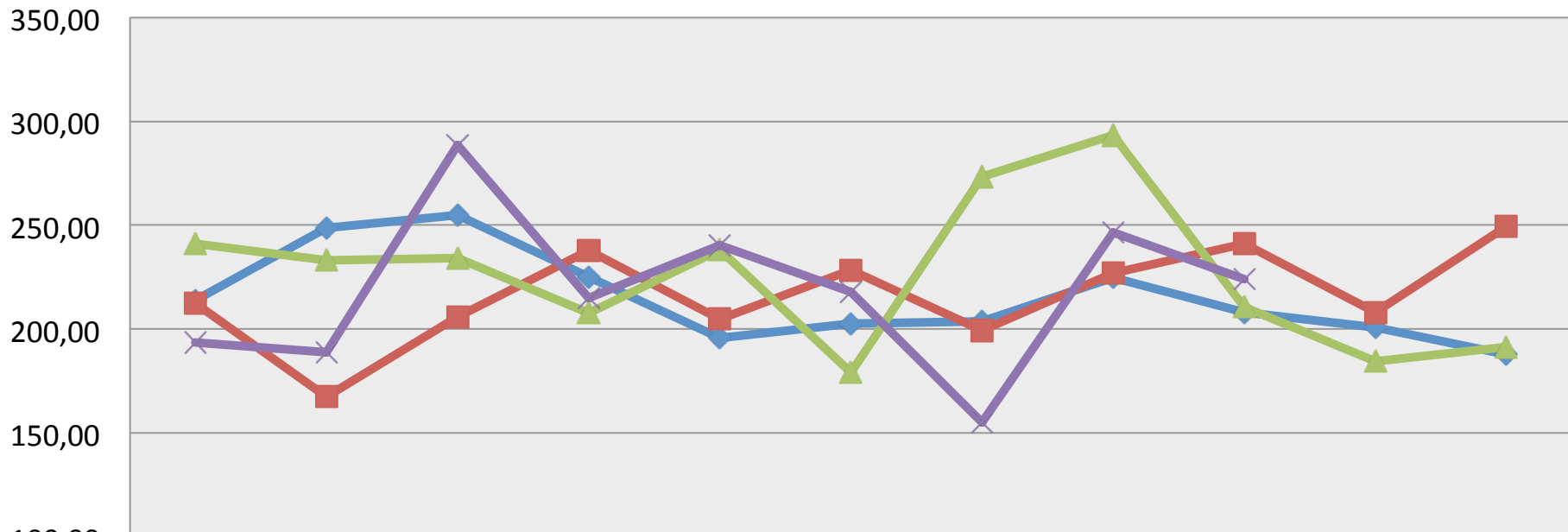
# GFIE Index October 2015

## Export Index



# GFIE Index October 2015

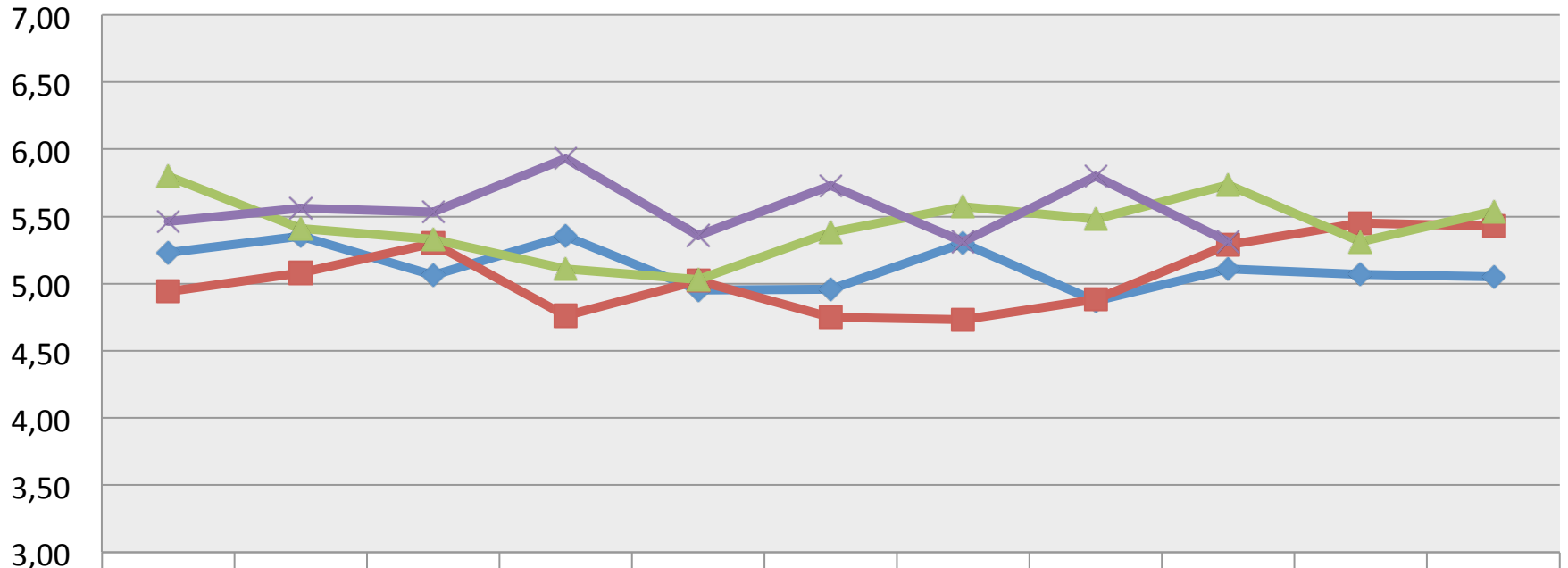
**Global GFIE Index (France + Export)**



	Jan	Feb	Mar	Apr	May	Jun	Jul-Aug	Sept	Oct	Nov	Dec
◆ 2012	214,05	248,69	254,93	225,13	195,88	202,54	203,81	224,76	208,16	200,74	187,77
■ 2013	212,34	167,47	205,88	237,66	204,89	228,38	199,27	226,82	241,24	207,94	249,58
▲ 2014	241,27	233,14	234,25	207,82	238,08	179,12	273,33	293,37	210,55	184,61	191,46
✕ 2015	193,67	189,05	288,52	215,16	240,20	217,82	155,07	246,45	223,90		

# GFIE Index October 2015

**Trust Index**

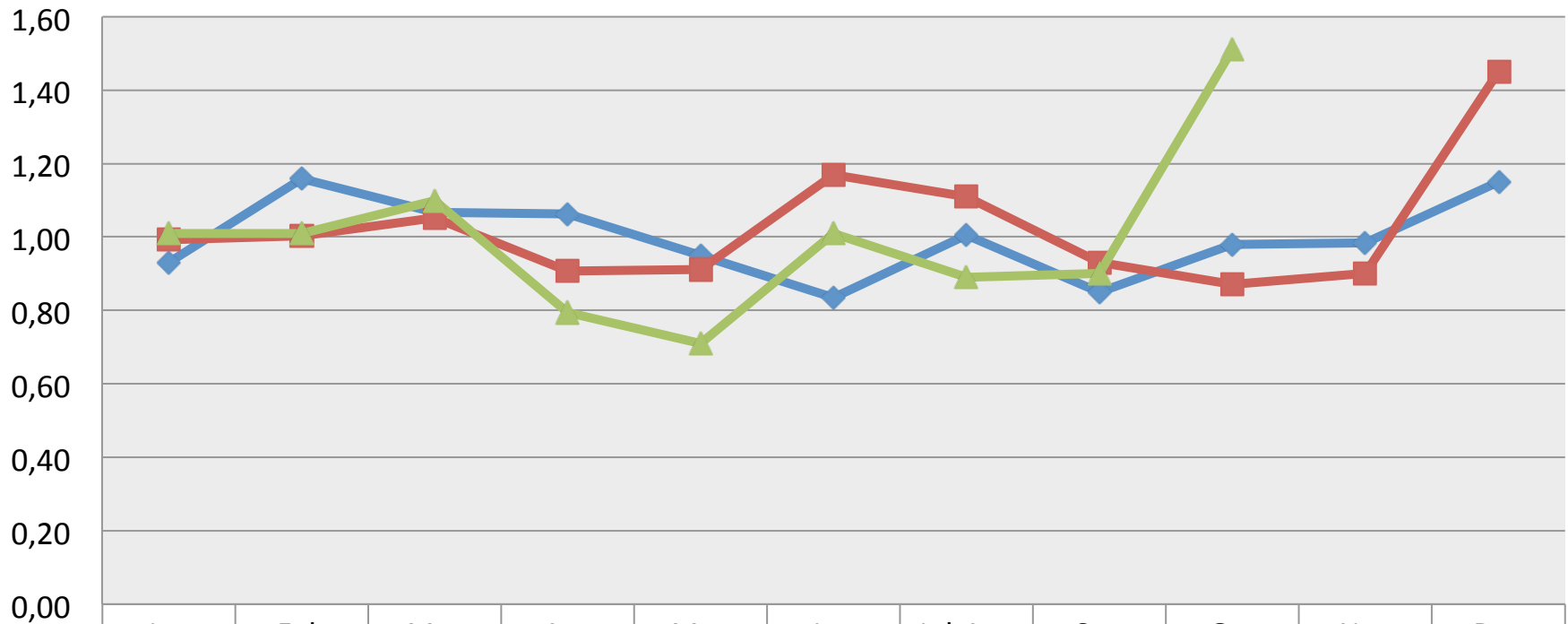


	Jan	Feb	Mar	Apr	May	Jun	Jul-Aug	Sept	Oct	Nov	Dec
◆ 2012	5,23	5,35	5,06	5,35	4,95	4,96	5,30	4,87	5,11	5,07	5,05
■ 2013	4,94	5,08	5,30	4,76	5,02	4,75	4,73	4,88	5,29	5,45	5,43
▲ 2014	5,80	5,41	5,33	5,11	5,03	5,38	5,57	5,48	5,74	5,31	5,54
✕ 2015	5,46	5,56	5,53	5,93	5,36	5,73	5,31	5,80	5,31		



# GFIE Index October 2015

## Book Bill



2013

2014

2015