

GFIE Index November 2015

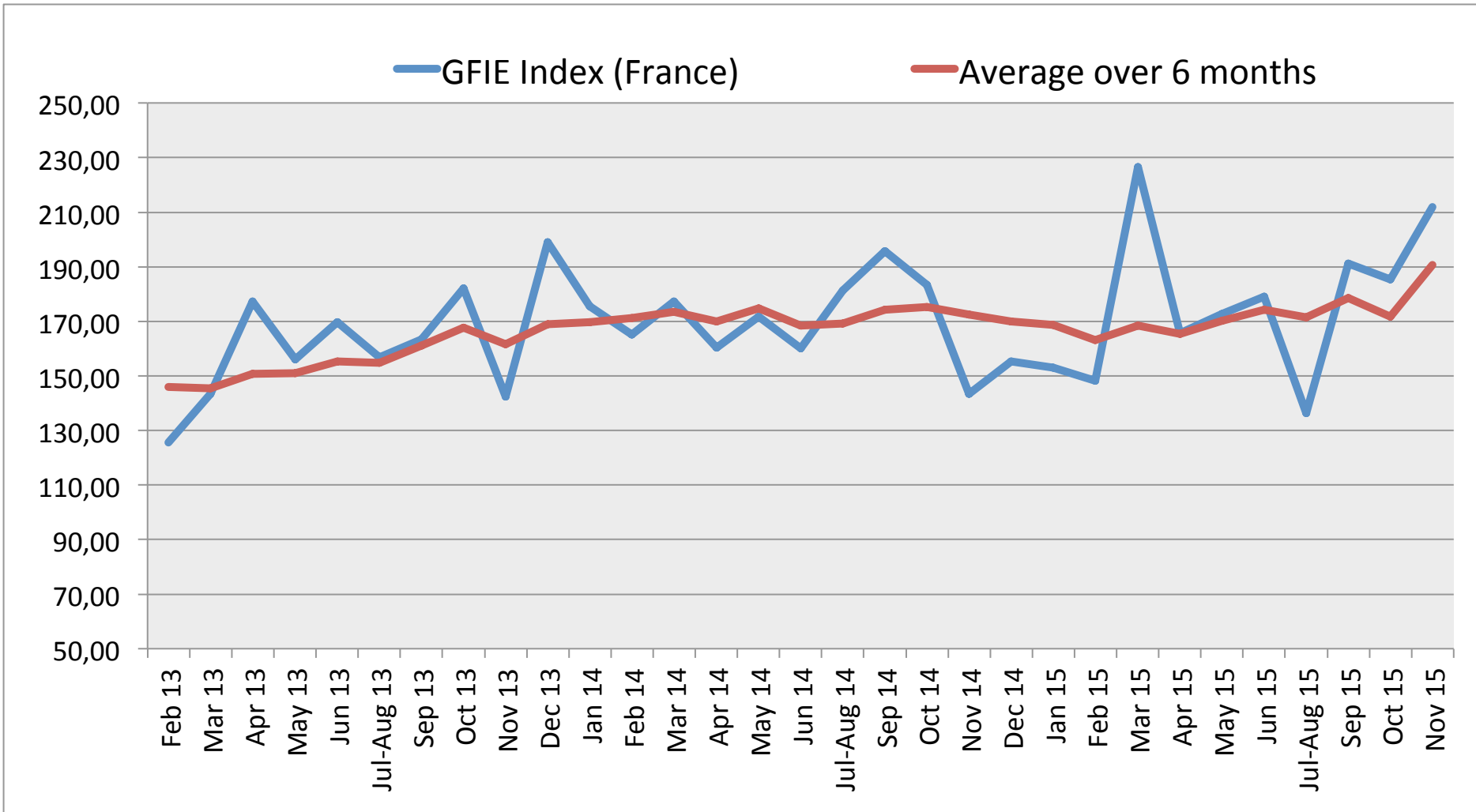
Comments from M. Pierre-Jean Albrieux, President of GFIE

The GFIE joined ACSIEL with the SIMTEC on January 1st in order to build ACSIEL Alliance Electronique. The GFIE index will become the ACSIEL Alliance Electronique from the Collège Equipements et Services. When it comes to the November 2015 index we rather wanted to keep the name « GFIE index » and its logo. Like every year at this moment, I take advantage of the November index publication to wish you a happy new year.

I am all the more pleased in that it is the first time in 5 years that the November index increases by 5,35% compared to the October France index and by 12% compared to the global index. The confidence index accounts for 5,51 in the same way. It is enjoyable to see that November is no longer the « jinx » and that our activities are heading in the right direction.

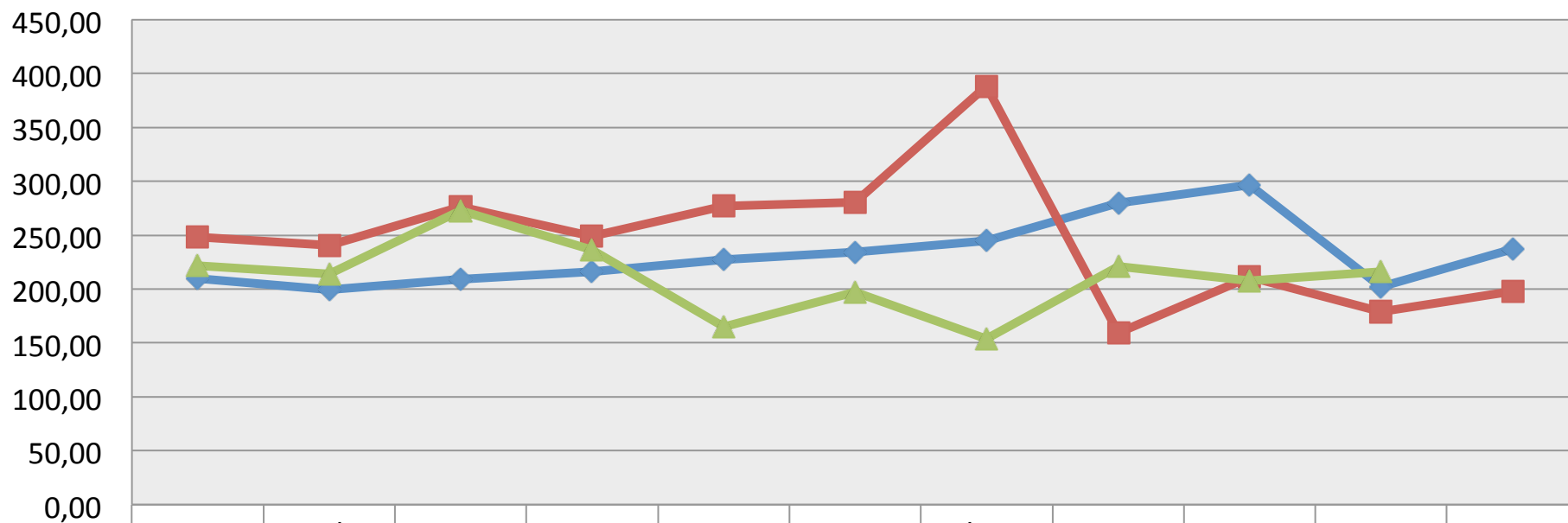
Trust Index		France Index variation over October 2015							BookBill			
5,51		+5,35%							0,93			
	Nov 14	Dec 14	Jan 15	Feb 15	Mar 15	Apr 15	May 15	Jun 15	Jul-A 15	Sep 15	Oct 15	Nov 15
France GFIE Index	143,44	155,29	153,10	148,17	226,60	165,75	172,82	178,97	136,34	191,21	185,42	211,83
Average over 6 months	172,58	169,84	168,69	163,17	168,32	165,39	170,29	174,24	171,44	178,62	171,75	179,43

GFIE Index November 2015



GFIE Index November 2015

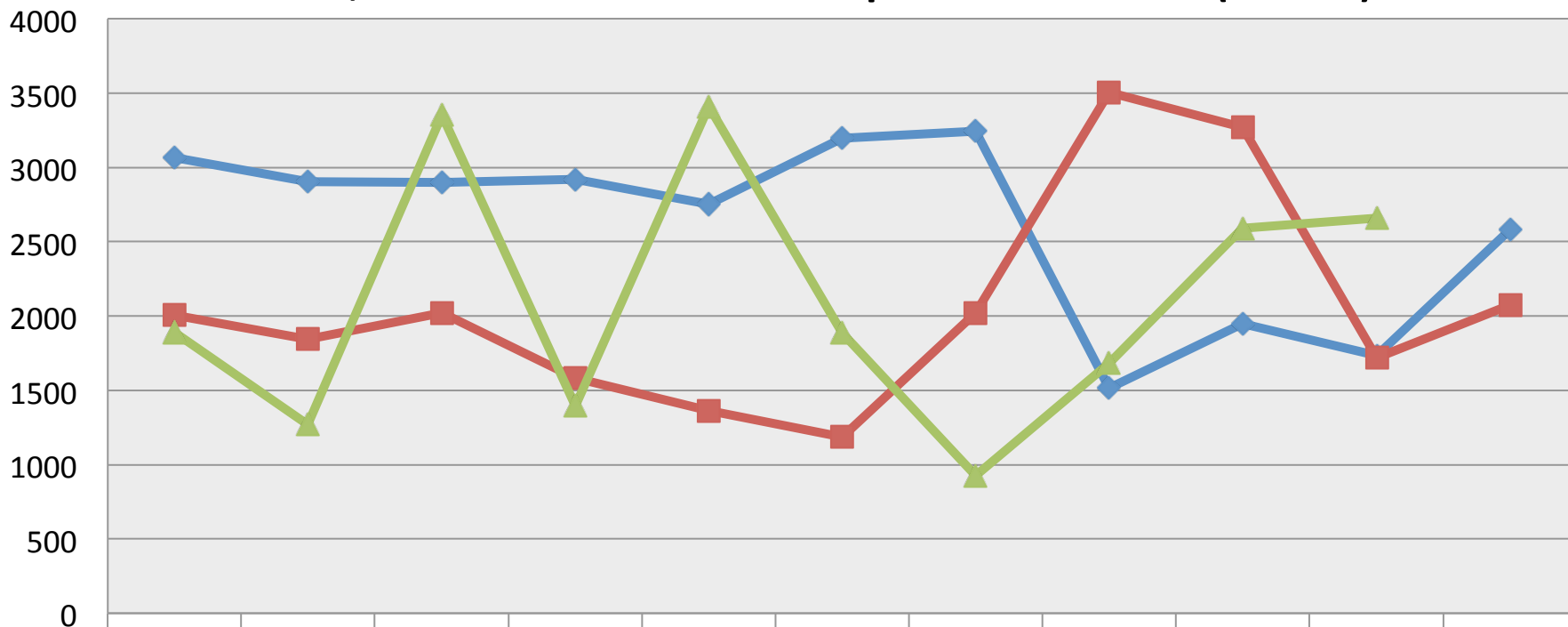
Electronic Goods, Tools and Equipment (<5 000€) Index (France)



	Jan	Feb	Mar	Apr	May	Jun	Jul-Aug	Sept	Oct	Nov	Dec
◆ 2013	210,02	199,46	209,13	215,82	227,22	234,09	244,94	279,53	296,72	202,12	236,92
■ 2014	248,13	240,60	276,00	249,13	277,02	280,86	388,62	159,30	211,56	179,14	197,64
▲ 2015	221,54	213,82	272,97	236,20	164,71	197,42	153,75	221,13	207,46	216,23	

GFIE Index November 2015

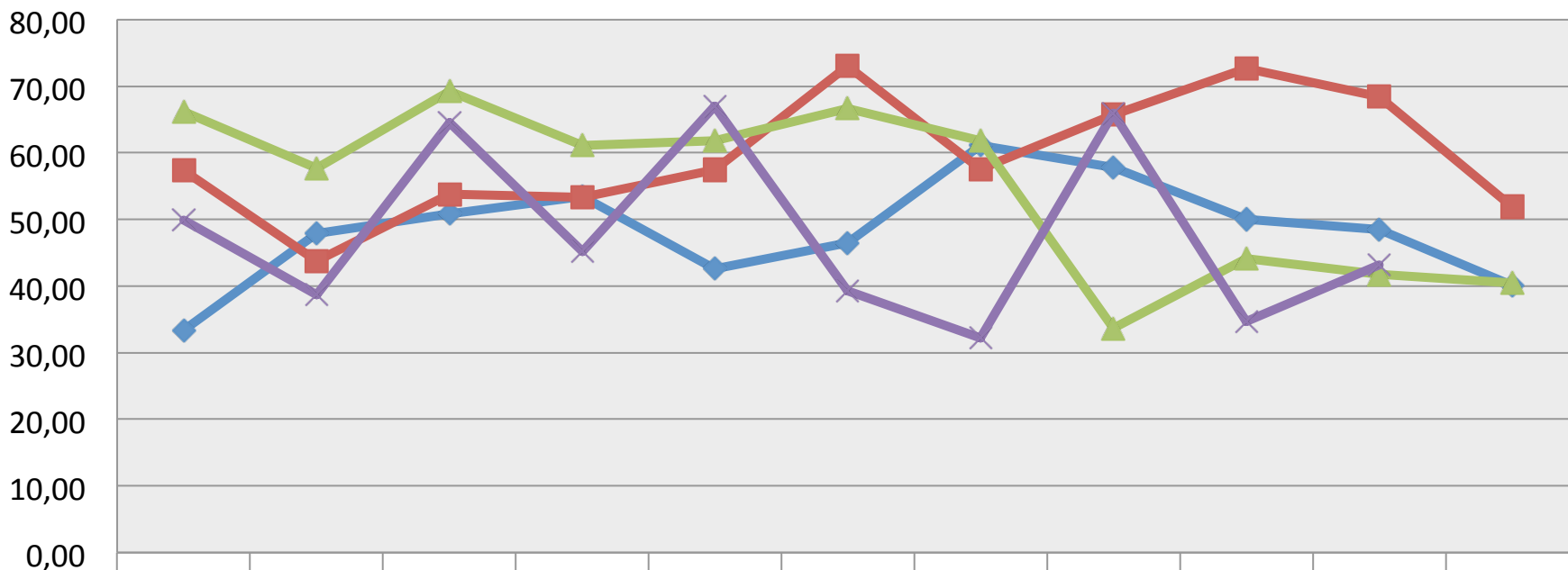
Machines, Products and Services to production Index (France)



	Jan	Feb	Mar	Apr	May	Jun	Jul-Aug	Sept	Oct	Nov	Dec
◆ 2013	3064	2906	2899	2917	2753	3199	3245	1515	1946	1735	2578
■ 2014	2006	1845	2021	1584	1361	1185	2024	3506	3270	1718	2072
▲ 2015	1889	1271	3352	1393	3410	1883	926	1680	2592	2660	

GFIE Index November 2015

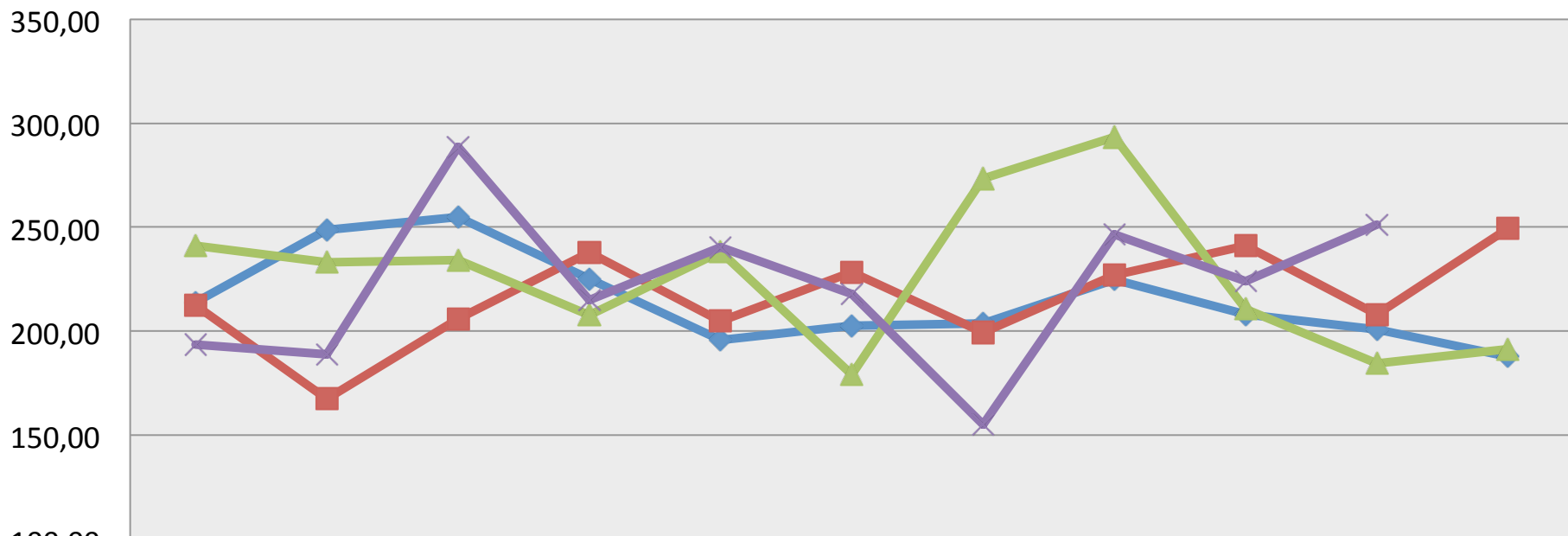
Export Index



	Jan	Feb	Mar	Apr	May	Jun	Jul-Aug	Sept	Oct	Nov	Dec
2012	33,34	47,86	50,89	53,38	42,60	46,48	61,13	57,83	49,99	48,54	40,09
2013	57,33	43,71	53,83	53,26	57,42	72,97	57,51	65,70	72,64	68,40	51,88
2014	66,13	57,69	69,26	61,14	61,86	66,65	61,84	33,67	44,15	41,76	40,50
2015	49,86	38,74	64,50	45,23	67,03	39,25	32,18	65,92	34,67	43,19	

GFIE Index November 2015

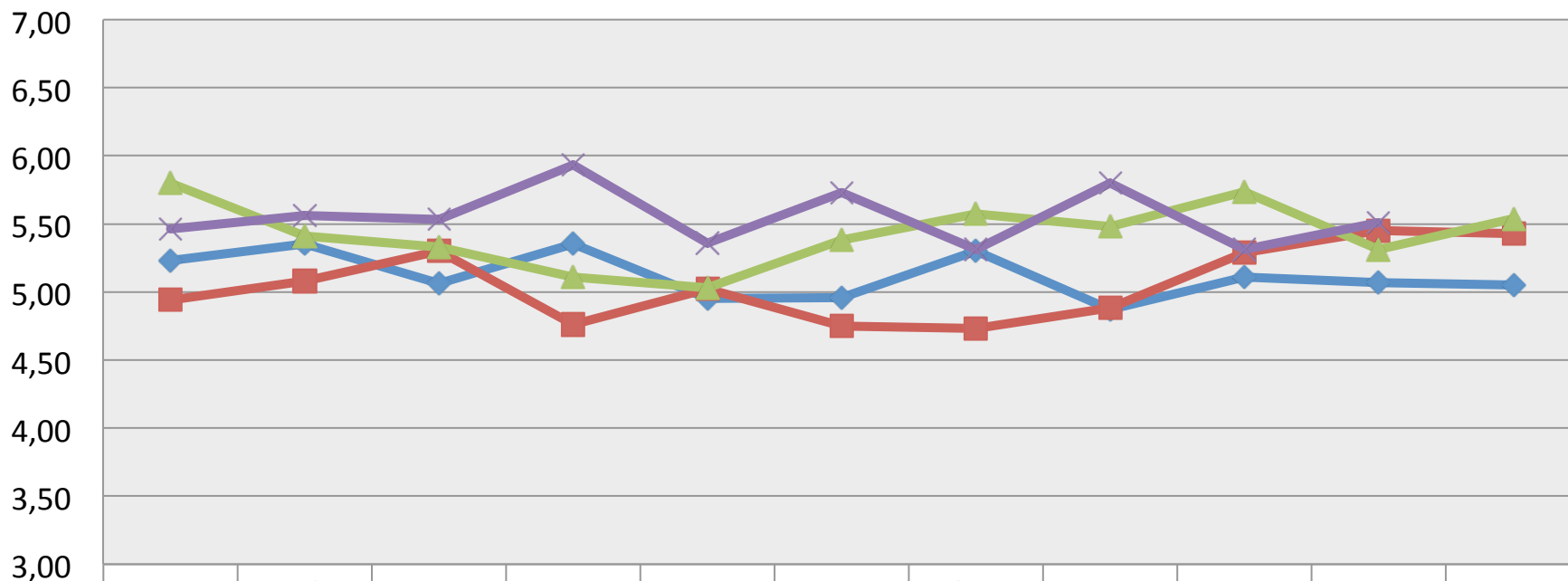
Global GFIE Index (France + Export)



	Jan	Feb	Mar	Apr	May	Jun	Jul-Aug	Sept	Oct	Nov	Dec
◆ 2012	214,05	248,69	254,93	225,13	195,88	202,54	203,81	224,76	208,16	200,74	187,77
■ 2013	212,34	167,47	205,88	237,66	204,89	228,38	199,27	226,82	241,24	207,94	249,58
▲ 2014	241,27	233,14	234,25	207,82	238,08	179,12	273,33	293,37	210,55	184,61	191,46
✕ 2015	193,67	189,05	288,52	215,16	240,20	217,82	155,07	246,45	223,90	251,38	

GFIE Index November 2015

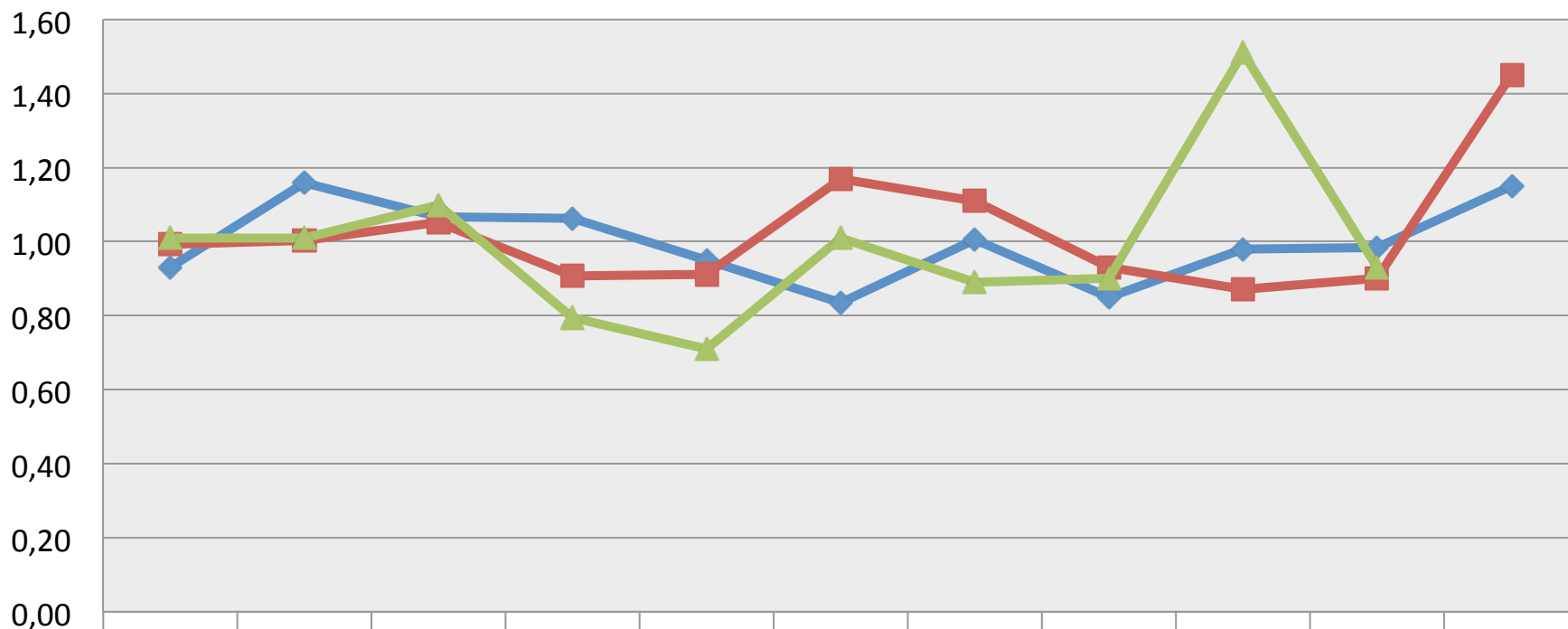
Trust Index



	Jan	Feb	Mar	Apr	May	Jun	Jul-Aug	Sept	Oct	Nov	Dec
◆ 2012	5,23	5,35	5,06	5,35	4,95	4,96	5,30	4,87	5,11	5,07	5,05
■ 2013	4,94	5,08	5,30	4,76	5,02	4,75	4,73	4,88	5,29	5,45	5,43
▲ 2014	5,80	5,41	5,33	5,11	5,03	5,38	5,57	5,48	5,74	5,31	5,54
✕ 2015	5,46	5,56	5,53	5,93	5,36	5,73	5,31	5,80	5,31	5,51	

GFIE Index November 2015

Book Bill



2013

2014

2015