



# GFIE Index November 2014



## Comments from M. Pierre-Jean Albrieux, President of the GFIE

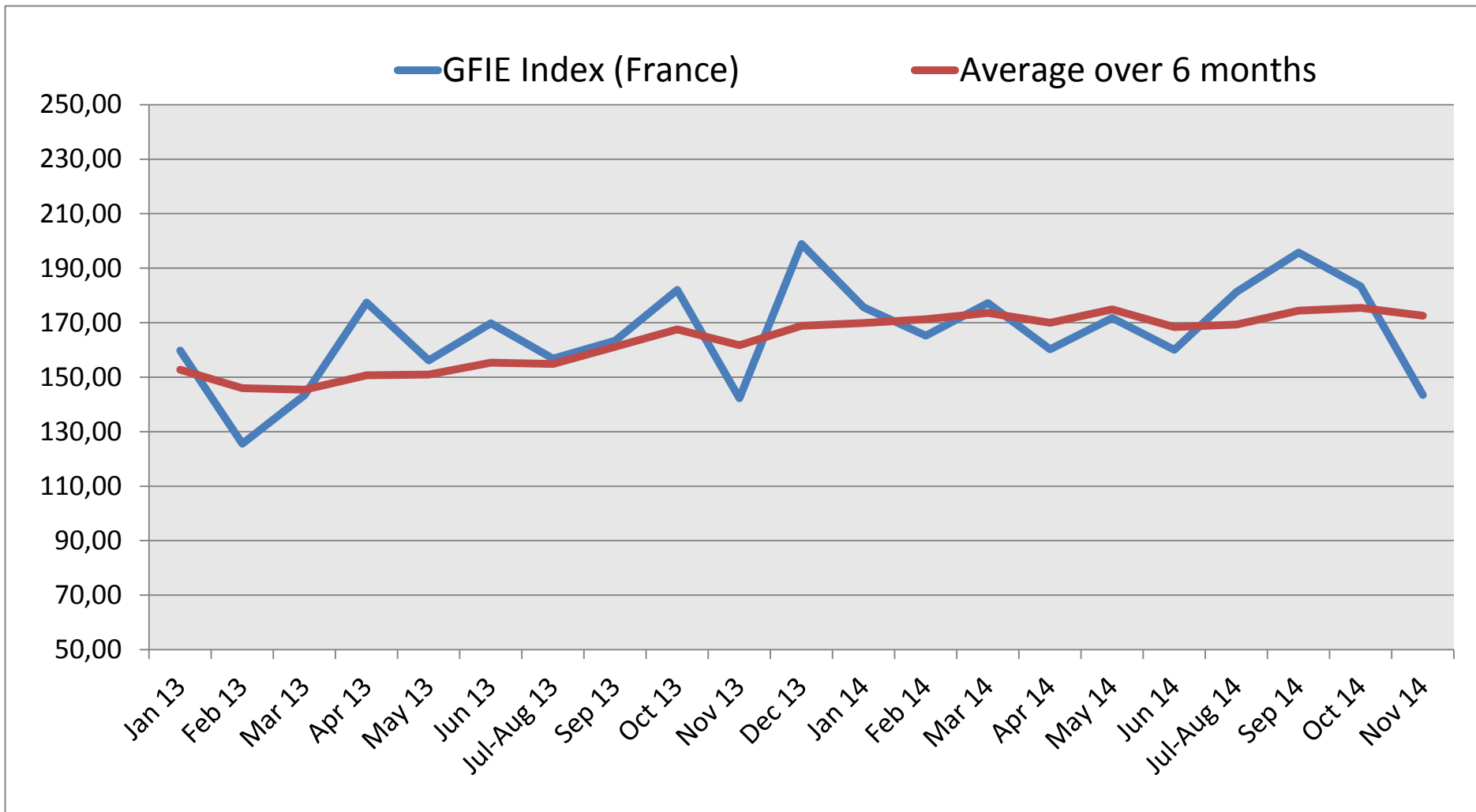
Would November become the usual worst month of the year? In all cases, It is the lowest index throughout 2014, almost as low as the November 2013 index. As regards the members' commentaries, they are all negative apart from a negative one and a neutral one; yet the trust index remains well above 5. It would appear that we have seen worse situations, that we are immunized with the flu – This is the time – that the rest of the year offsets this bad result and there is no good reason to be concerned. I wish to all of you a very happy new year 2015.

Trust Index	France Index variation over October 2014	BookBill
5,31	-21,75%	0,90

	Dec 13	Jan 14	Feb 14	Mar 14	Apr 14	May 14	Jun 14	Jul-Aug 14	Sep 14	Oct 14	Nov 14
France GFIE Index	198,90	175,60	165,27	177,24	160,26	171,74	160,02	181,24	195,74	183,30	143,44
Average over 6 months	168,86	169,83	171,24	173,55	175,45	174,84	168,36	169,30	174,37	175,39	172,58

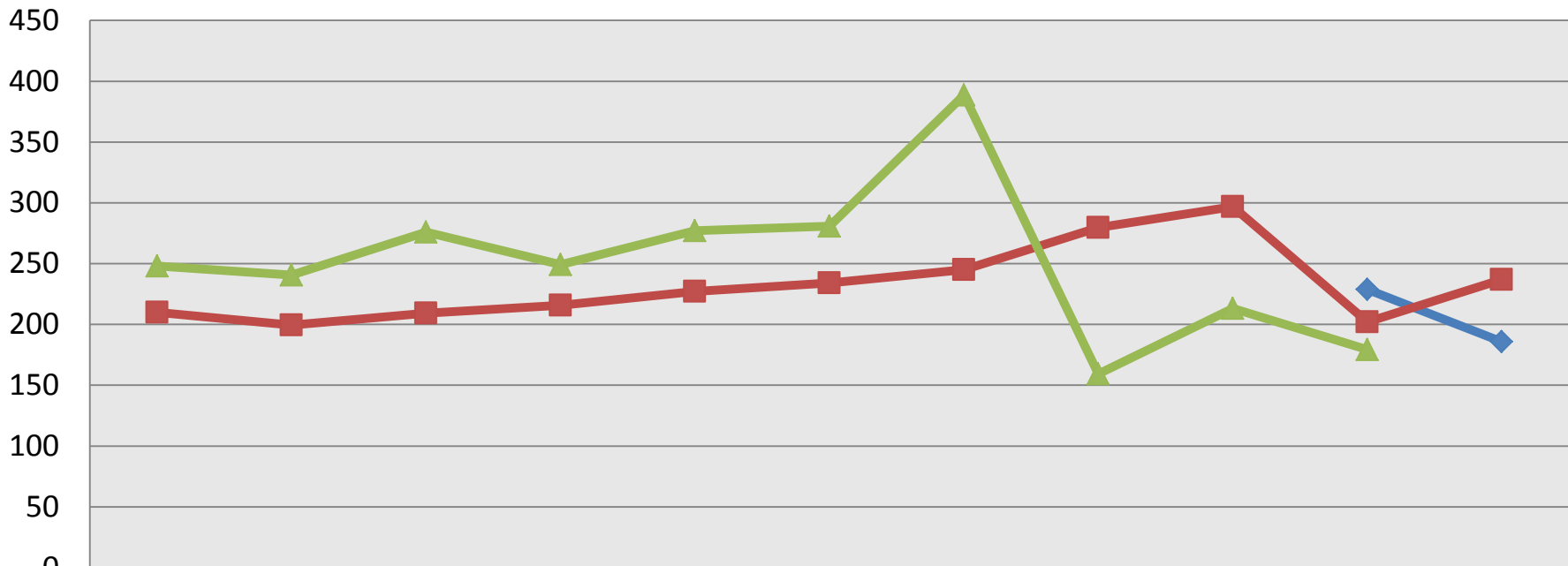


# GFIE Index November 2014



# GFIE Index November 2014

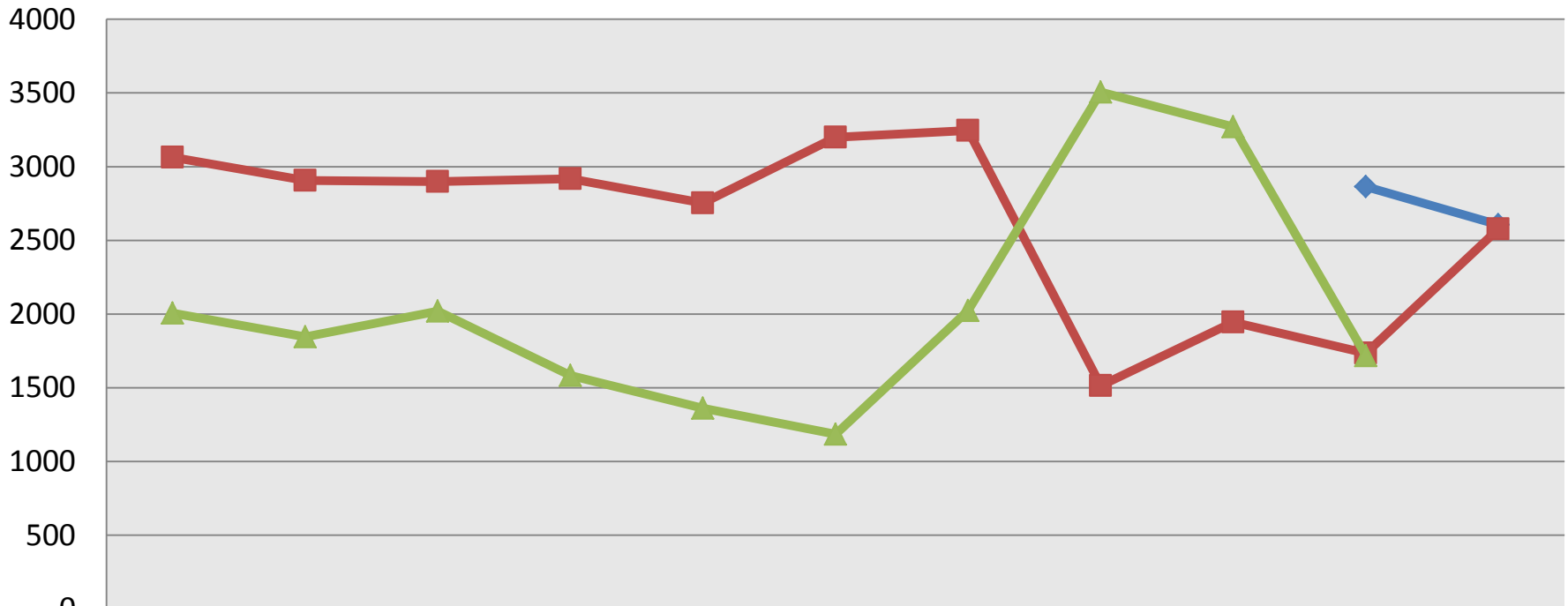
**Electronic Goods, Tools and Equipment (<5 000 €) Index (France)**



	Jan	Feb	Mar	Apr	May	Jun	Jul-Aug	Sept	Oct	Nov	Dec
2012										228,66	185,82
2013	210,02	199,46	209,13	215,82	227,22	234,09	244,94	279,53	296,72	202,12	236,92
2014	248,13	240,60	276,00	249,13	277,02	280,86	388,62	159,30	213,27	179,14	

# GFIE Index November 2014

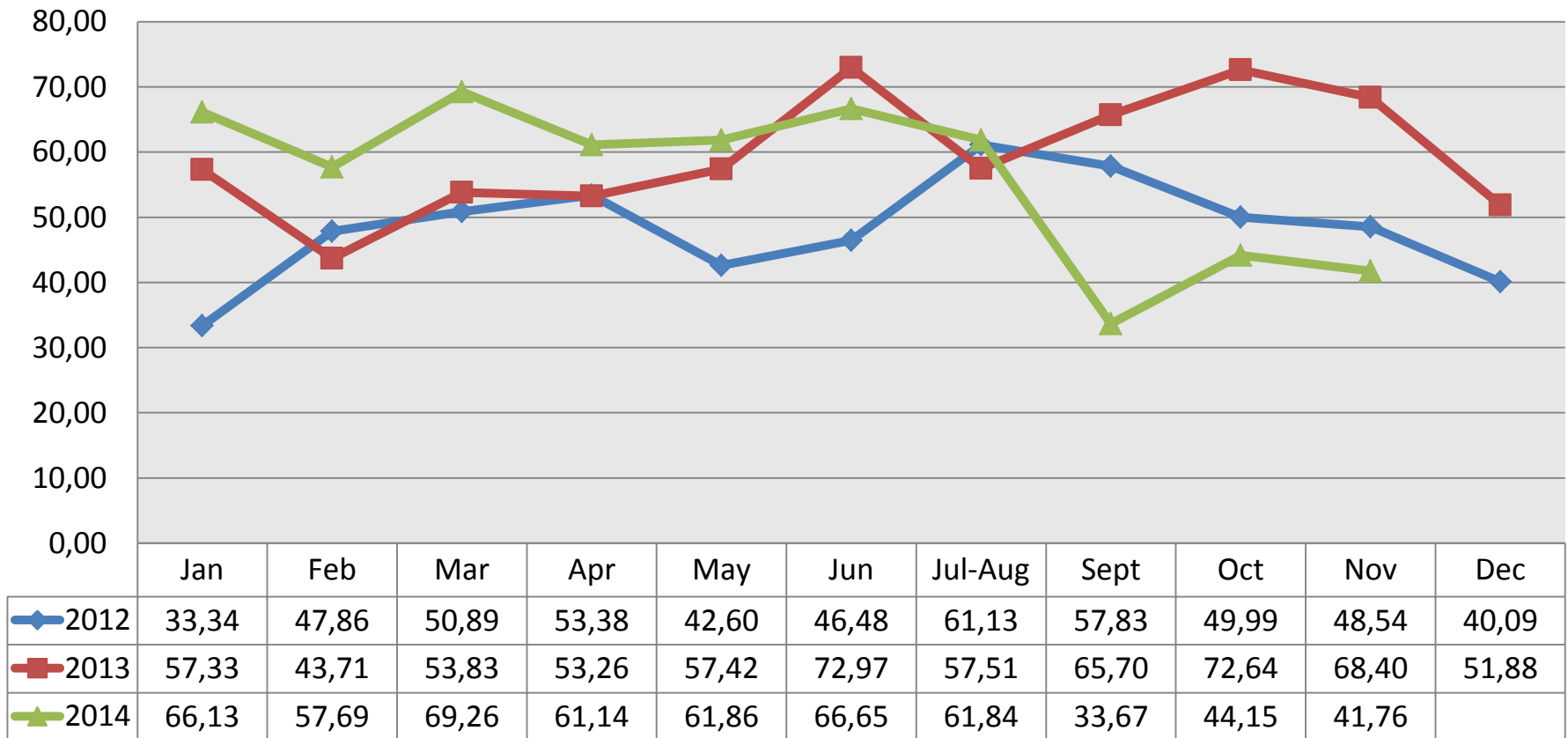
**Machines, Products and Services to production Index (France)**



	Jan	Feb	Mar	Apr	May	Jun	Jul-Aug	Sept	Oct	Nov	Dec
2012										2864	2606
2013	3064	2906	2899	2917	2753	3199	3245	1515	1946	1735	2578
2014	2006	1845	2021	1584	1361	1185	2024	3506	3270	1718	

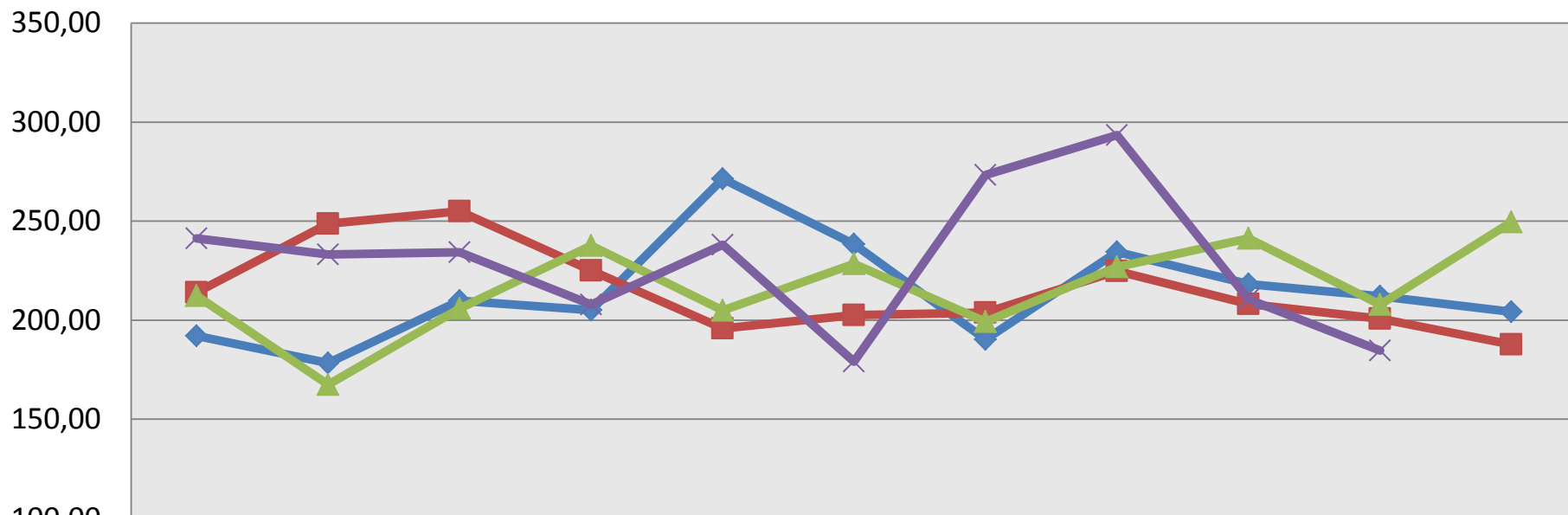
# GFIE Index November 2014

**Export Index**



# GFIE Index November 2014

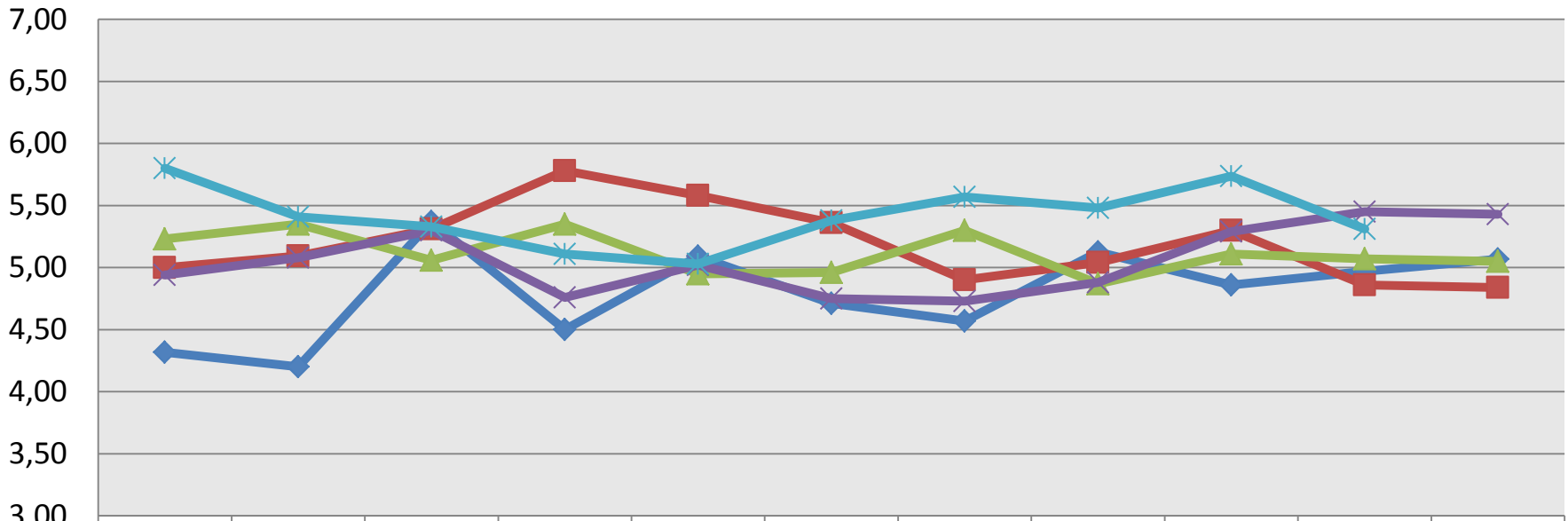
**Evolution of the global GFIE index (France + Export) between 2011 & 2014**



	Jan	Feb	Mar	Apr	May	Jun	Jul-Aug	Sept	Oct	Nov	Dec
◆ 2011	192,08	178,31	209,81	205,03	271,37	238,39	190,23	234,37	218,27	212,06	204,19
■ 2012	214,05	248,69	254,93	225,13	195,88	202,54	203,81	224,76	208,16	200,74	187,77
▲ 2013	212,34	167,47	205,88	237,66	204,89	228,38	199,27	226,82	241,24	207,94	249,58
✕ 2014	241,27	233,14	234,25	207,82	238,08	179,12	273,33	293,37	210,55	184,61	

# GFIE Index November 2014

**Trust Index**

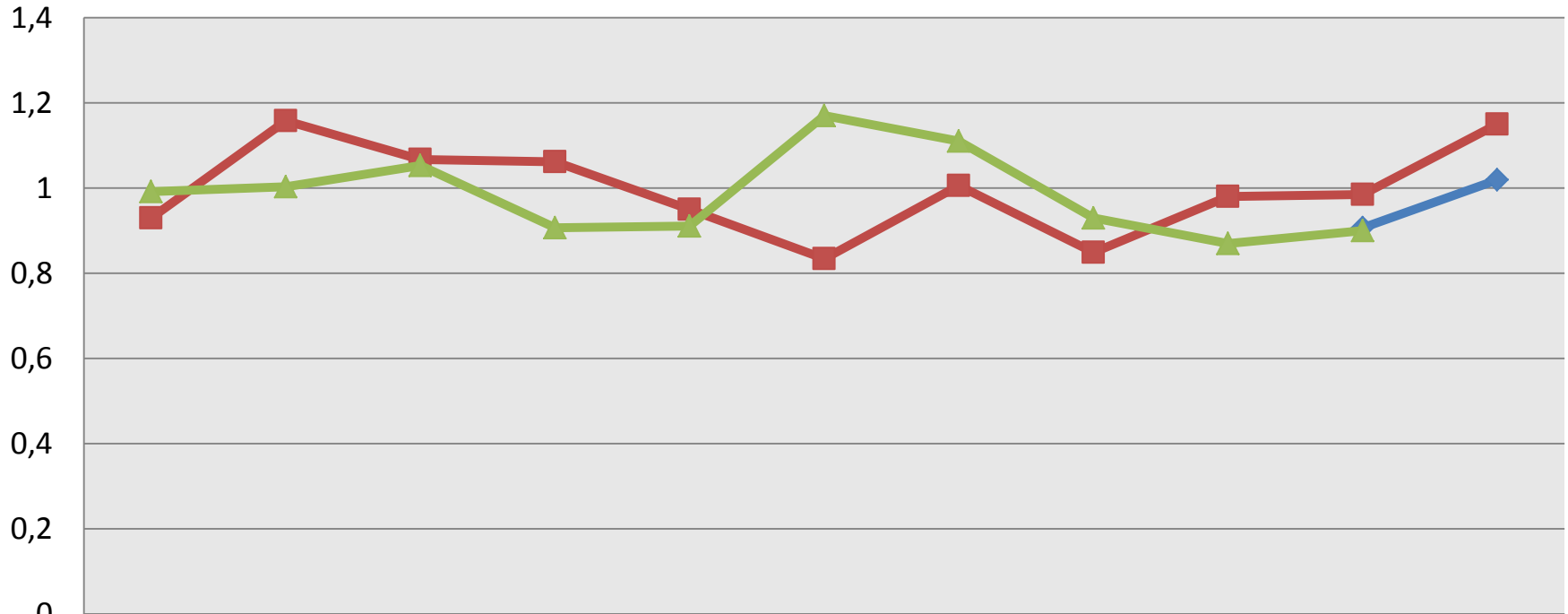


	Jan	Feb	Mar	Apr	May	Jun	Jul-Aug	Sept	Oct	Nov	Dec
◆ 2010	4,32	4,20	5,37	4,50	5,09	4,71	4,57	5,13	4,86	4,97	5,07
■ 2011	5,00	5,09	5,31	5,78	5,58	5,36	4,90	5,04	5,30	4,86	4,84
▲ 2012	5,23	5,35	5,06	5,35	4,95	4,96	5,30	4,87	5,11	5,07	5,05
✕ 2013	4,94	5,08	5,30	4,76	5,02	4,75	4,73	4,88	5,29	5,45	5,43
✧ 2014	5,80	5,41	5,33	5,11	5,03	5,38	5,57	5,48	5,74	5,31	



# GFIE Index November 2014

**Book Bill**



	Jan	Feb	Mar	Apr	May	Jun	Jul-Aug	Sep	Oct	Nov	Dec
◆ 2012										0,91	1,02
■ 2013	0,93	1,16	1,07	1,06	0,95	0,83	1,01	0,85	0,98	0,99	1,15
▲ 2014	0,99	1,00	1,05	0,91	0,91	1,17	1,11	0,93	0,87	0,90	