



# GFIE Index May 2015

## Comments from M. Pierre-Jean Albrieux, President of GFIE

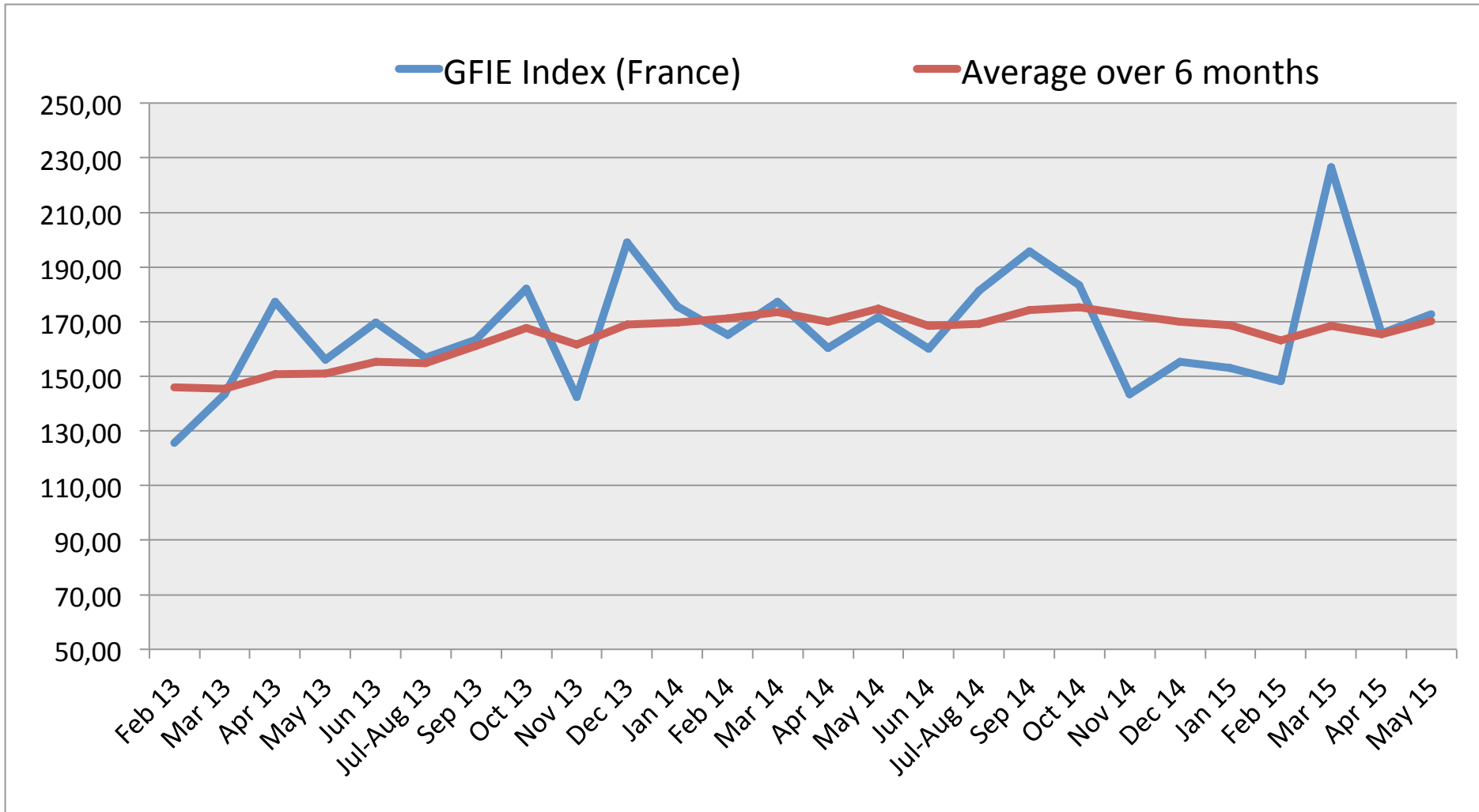
« We were expecting that May would decrease, the France index is increasing by 4%, though. This results from the Machine & Services and equipment sales which go up and down on alternate months. Since the export index is also increasing, the global index is rising at 11,6%. This is not unsatisfactory for May but April has not been extraordinary. These were the good news. On the down side, though, the strongly decreasing Consumer goods index and the Confidence index which is decreasing for the first time since November. Roll on the holidays, they come at the right time ».

Trust Index	France Index variation over April 2015	BookBill
5,36	+4,27%	0,709

	Jun 14	Jul-Aug 14	Sep 14	Oct 14	Nov 14	Dec 14	Jan 15	Feb 15	Mar 15	Apr 15	May 15
France GFIE Index	160,02	181,24	195,74	183,30	143,44	155,29	153,10	148,17	226,60	165,75	172,82
Average over 6 months	168,36	169,30	174,37	175,39	172,58	169,84	168,69	163,17	168,32	165,39	170,29

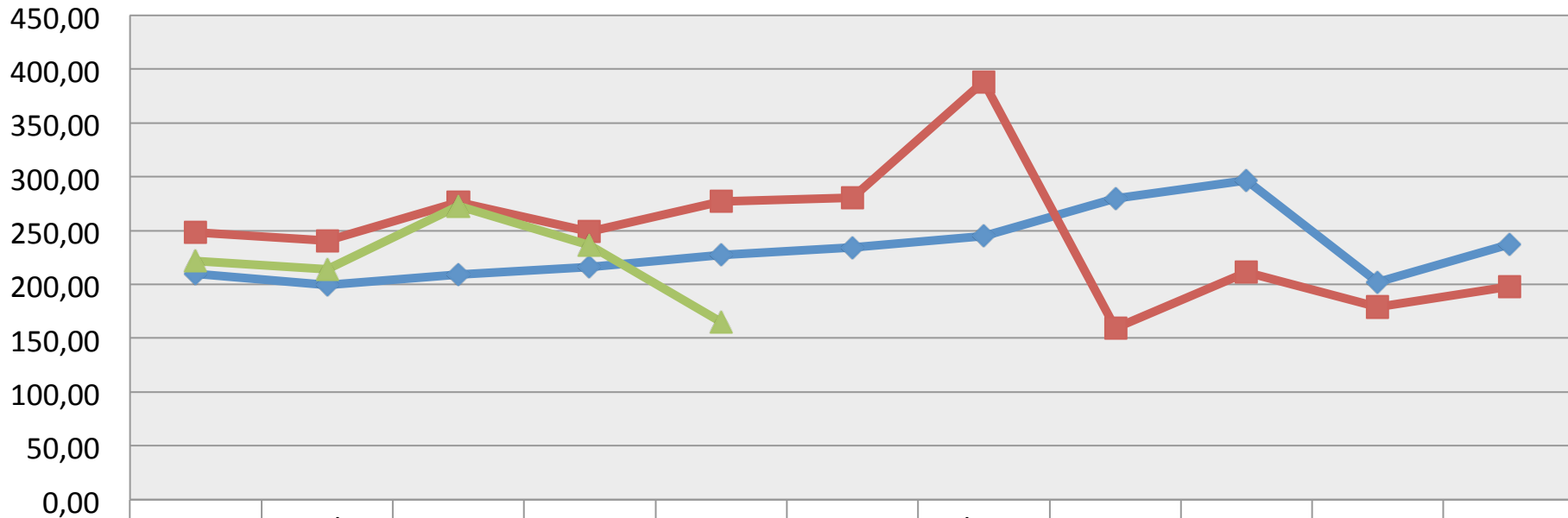


# GFIE Index May 2015



# GFIE Index May 2015

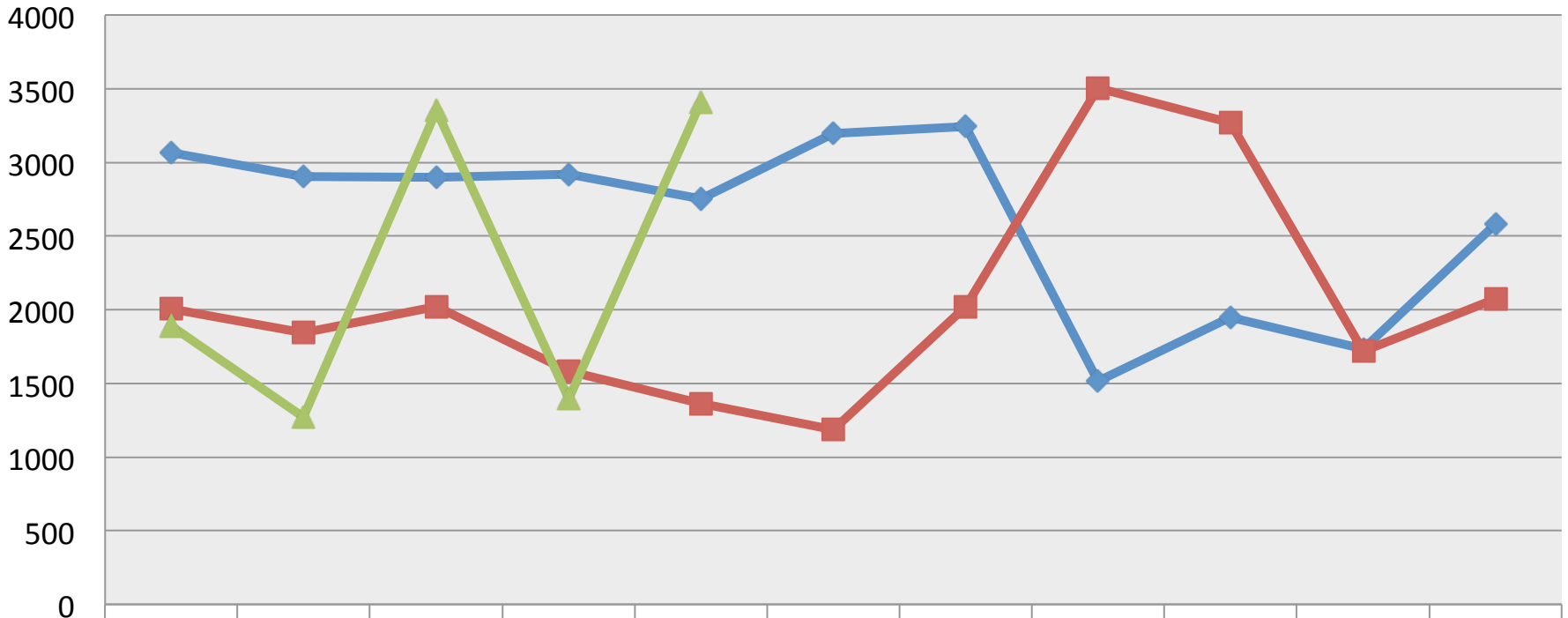
**Electronic Goods, Tools and Equipment (<5 000€) Index (France)**



	Jan	Feb	Mar	Apr	May	Jun	Jul-Aug	Sept	Oct	Nov	Dec
◆ 2013	210,02	199,46	209,13	215,82	227,22	234,09	244,94	279,53	296,72	202,12	236,92
■ 2014	248,13	240,60	276,00	249,13	277,02	280,86	388,62	159,30	211,56	179,14	197,64
▲ 2015	221,54	213,82	272,97	236,20	164,71						

# GFIE Index May 2015

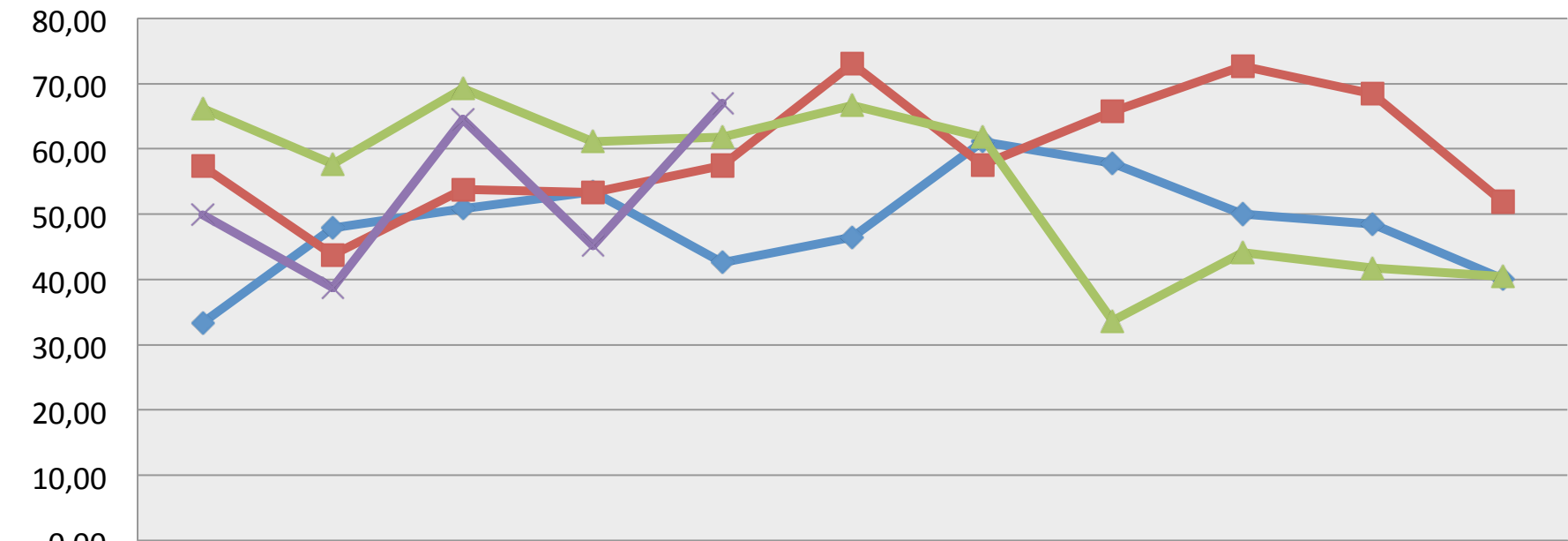
**Machines, Products and Services to production Index (France)**



	Jan	Feb	Mar	Apr	May	Jun	Jul-Aug	Sept	Oct	Nov	Dec
◆ 2013	3064	2906	2899	2917	2753	3199	3245	1515	1946	1735	2578
■ 2014	2006	1845	2021	1584	1361	1185	2024	3506	3270	1718	2072
▲ 2015	1889	1271	3352	1393	3410						

# GFIE Index May 2015

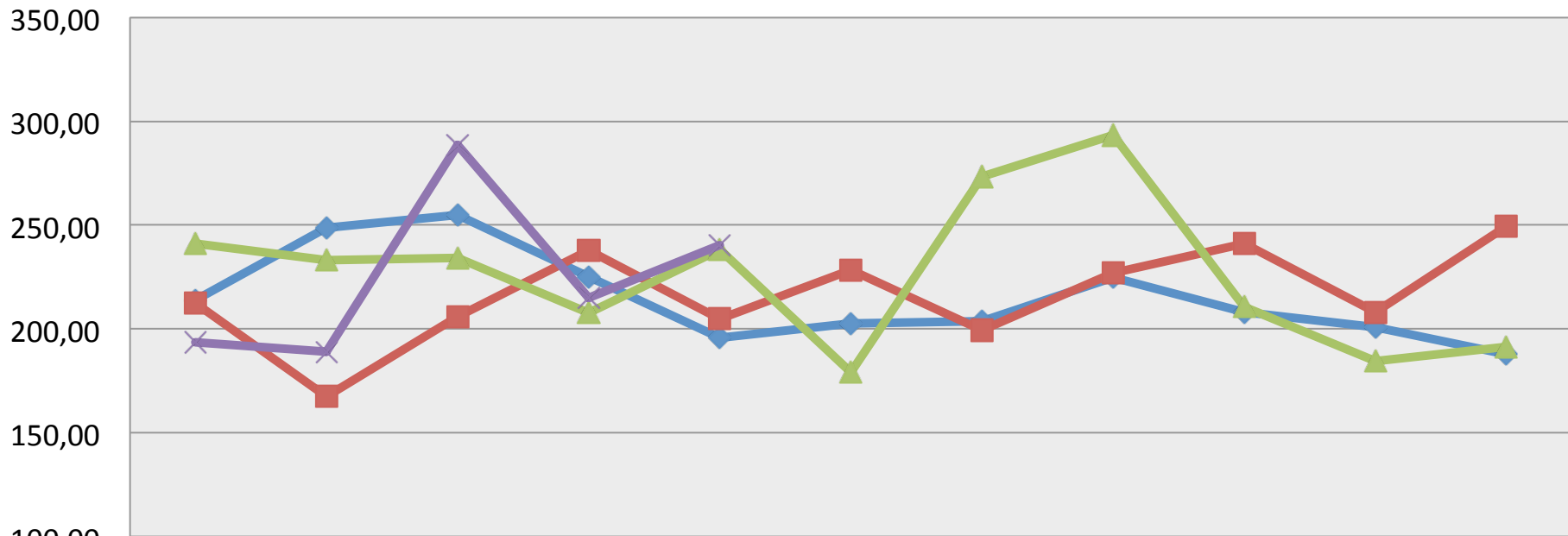
## Export Index



	Jan	Feb	Mar	Apr	May	Jun	Jul-Aug	Sept	Oct	Nov	Dec
2012	33,34	47,86	50,89	53,38	42,60	46,48	61,13	57,83	49,99	48,54	40,09
2013	57,33	43,71	53,83	53,26	57,42	72,97	57,51	65,70	72,64	68,40	51,88
2014	66,13	57,69	69,26	61,14	61,86	66,65	61,84	33,67	44,15	41,76	40,50
2015	49,86	38,74	64,50	45,23	67,03						

# GFIE Index May 2015

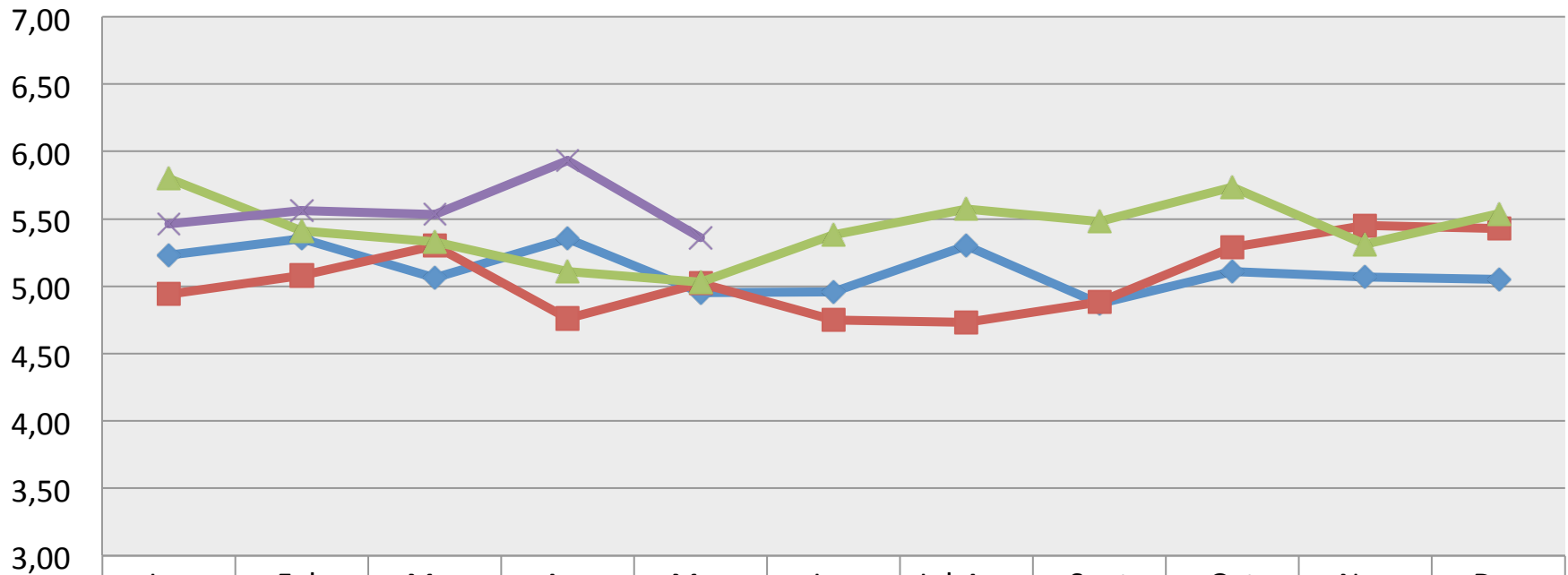
**Global GFIE Index (France + Export)**



	Jan	Feb	Mar	Apr	May	Jun	Jul-Aug	Sept	Oct	Nov	Dec
◆ 2012	214,05	248,69	254,93	225,13	195,88	202,54	203,81	224,76	208,16	200,74	187,77
■ 2013	212,34	167,47	205,88	237,66	204,89	228,38	199,27	226,82	241,24	207,94	249,58
▲ 2014	241,27	233,14	234,25	207,82	238,08	179,12	273,33	293,37	210,55	184,61	191,46
✕ 2015	193,67	189,05	288,52	215,16	240,20						

# GFIE Index May 2015

## Trust Index

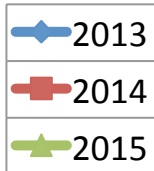
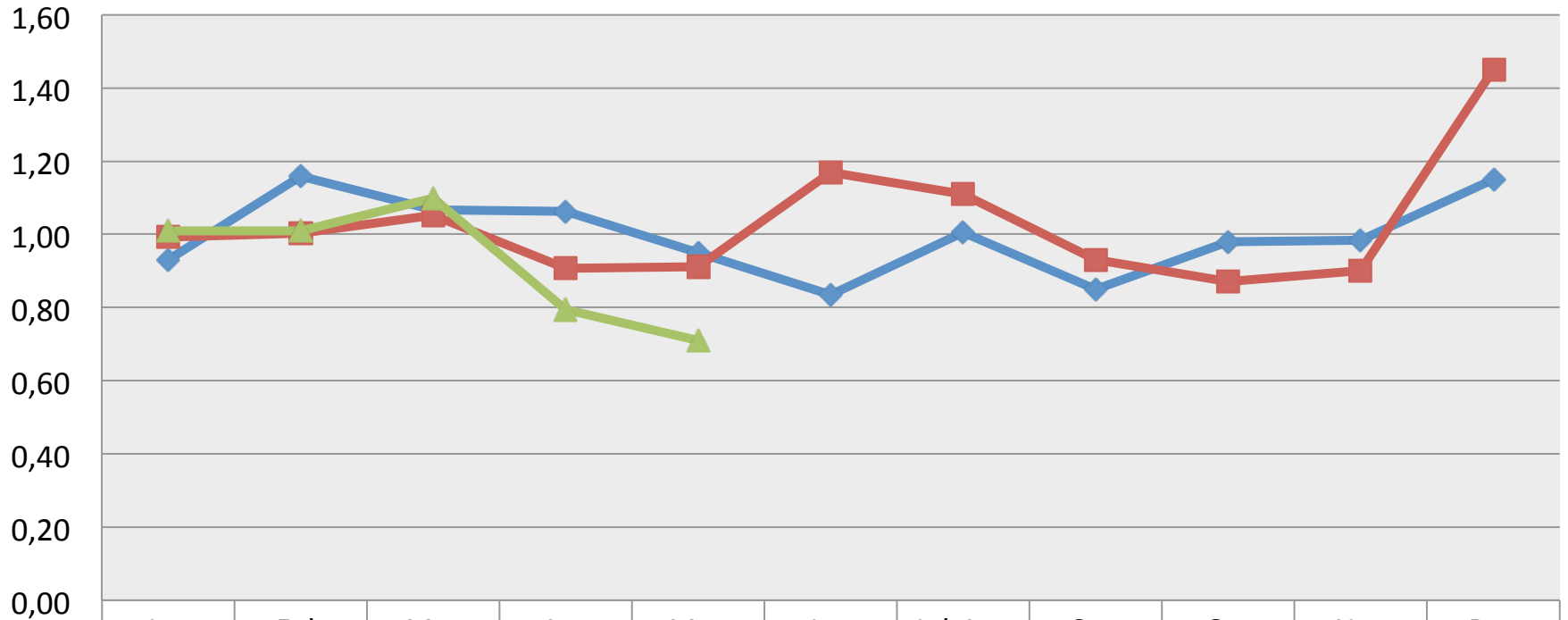


	Jan	Feb	Mar	Apr	May	Jun	Jul-Aug	Sept	Oct	Nov	Dec
◆ 2012	5,23	5,35	5,06	5,35	4,95	4,96	5,30	4,87	5,11	5,07	5,05
■ 2013	4,94	5,08	5,30	4,76	5,02	4,75	4,73	4,88	5,29	5,45	5,43
▲ 2014	5,80	5,41	5,33	5,11	5,03	5,38	5,57	5,48	5,74	5,31	5,54
✕ 2015	5,46	5,56	5,53	5,93	5,36						



# GFIE Index May 2015

**Book Bill**



	Jan	Feb	Mar	Apr	May	Jun	Jul-Aug	Sep	Oct	Nov	Dec
2013	0,93	1,16	1,07	1,06	0,95	0,83	1,01	0,85	0,98	0,99	1,15
2014	0,99	1,00	1,05	0,91	0,91	1,17	1,11	0,93	0,87	0,90	1,45
2015	1,01	1,01	1,10	0,79	0,71						