



GFIE Index March 2015



Comments from M. Pierre-Jean Albrieux, President of GFIE

Even if the activity during the first two months of the year was weak, March was a good surprise regarding our activity though the trust index slightly anticipated these results. This is not because March had 22 business days and that our activity was low in February that our pleasure will be spoiled. France Index: +52.93%; Electronic goods Index: +27.4%; Export Index: + 66%; Machines & services Index:...+163%.

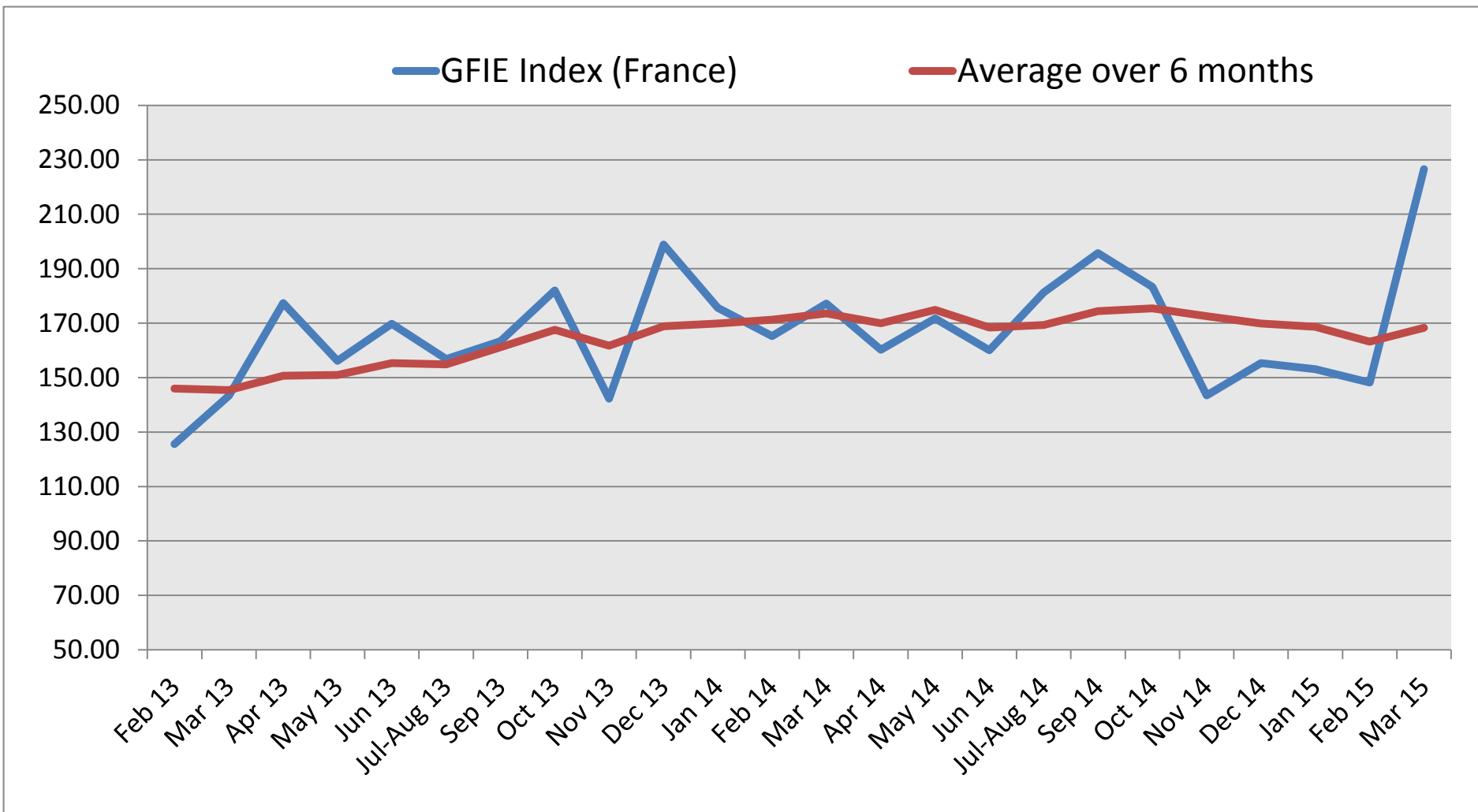
these are good news for our French and foreign activity. The trust index being stable at a good level, the outlook for our business is reassuring. Electronics and all its elements (on-board electronics, digital electronics, printed electronics, mechatronic systems and others...) are flourishing, let that be clearly understood.

Trust Index	France Index variation over February 2015	BookBill
5,53	52,93%	1,10

	Apr 14	May 14	Jun 14	Jul-Aug 14	Sep 14	Oct 14	Nov 14	Dec 14	Jan 15	Feb 15	Mar 15
France GFIE Index	160,26	171,74	160,02	181,24	195,74	183,30	143,44	155,29	153,10	148,17	226,60
Average over 6 months	160,26	174,84	168,36	169,30	174,37	175,39	172,58	169,84	168,69	163,17	168,32

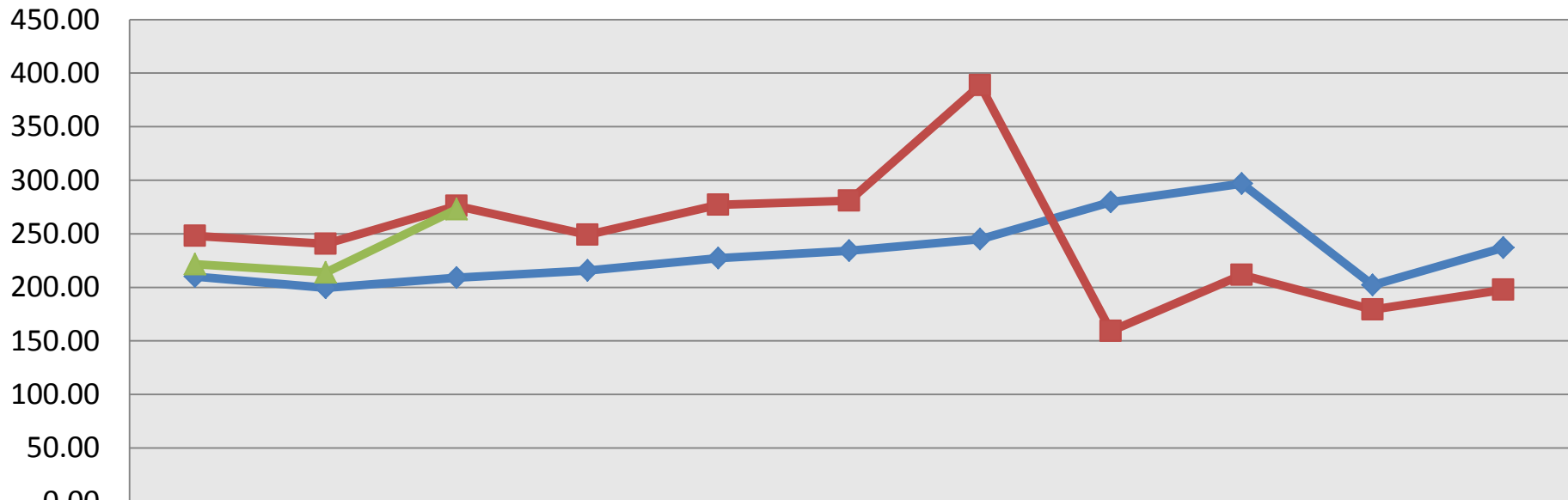


GFIE Index March 2015



GFIE Index March 2015

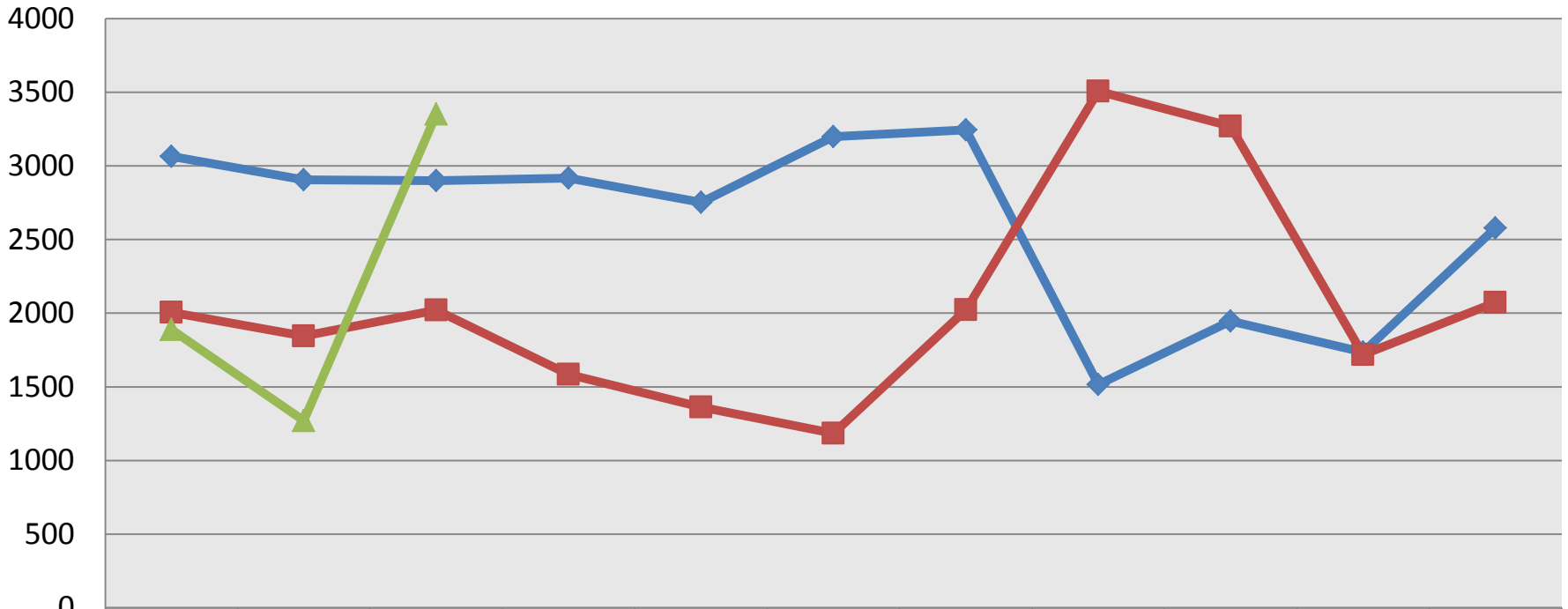
Electronic Goods, Tools and Equipment (<5 000€) Index (France)



	Jan	Feb	Mar	Apr	May	Jun	Jul-Aug	Sept	Oct	Nov	Dec
2013	210.02	199.46	209.13	215.82	227.22	234.09	244.94	279.53	296.72	202.12	236.92
2014	248.13	240.60	276.00	249.13	277.02	280.86	388.62	159.30	211.56	179.14	197.64
2015	221.54	213.82	272.97								

GFIE Index March 2015

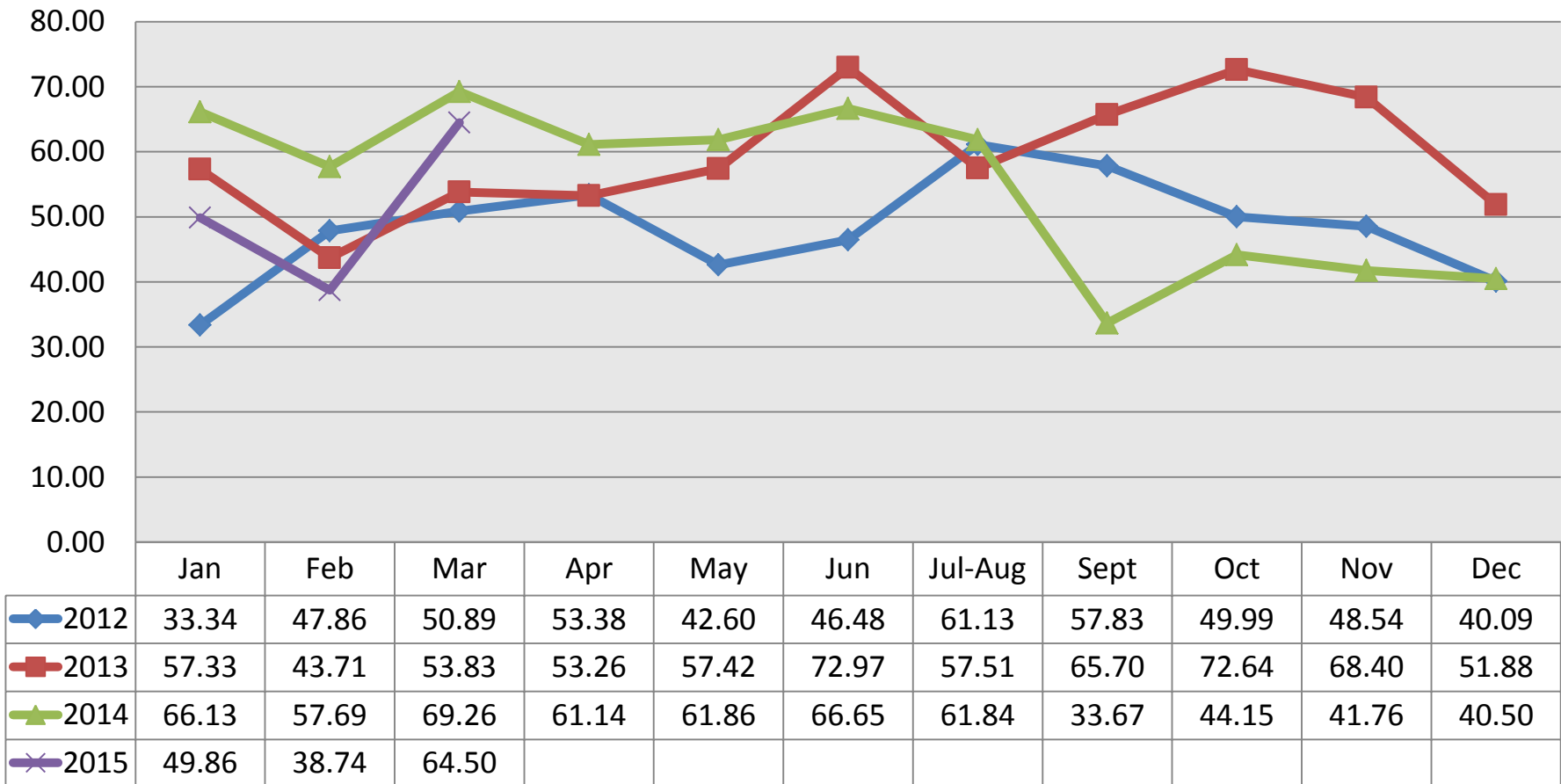
Machines, Products and Services to production Index (France)



	Jan	Feb	Mar	Apr	May	Jun	Jul-Aug	Sept	Oct	Nov	Dec
◆ 2013	3064	2906	2899	2917	2753	3199	3245	1515	1946	1735	2578
■ 2014	2006	1845	2021	1584	1361	1185	2024	3506	3270	1718	2072
▲ 2015	1889	1271	3352								

GFIE Index March 2015

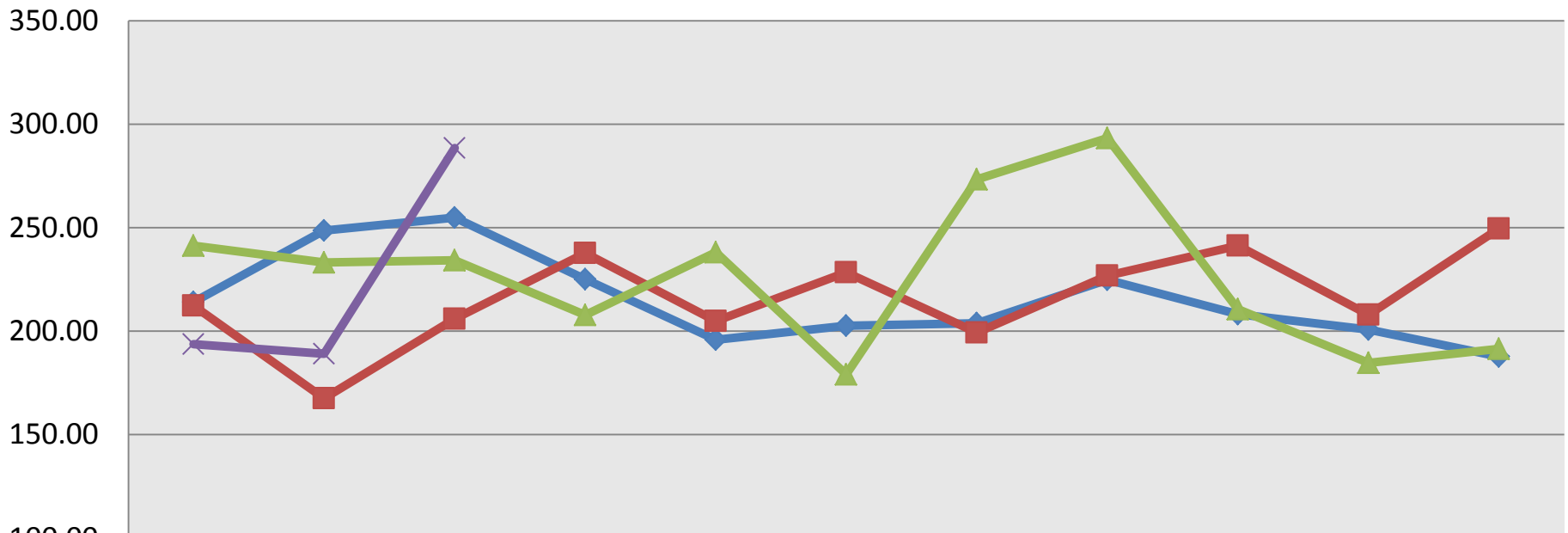
Export Index





GFIE Index March 2015

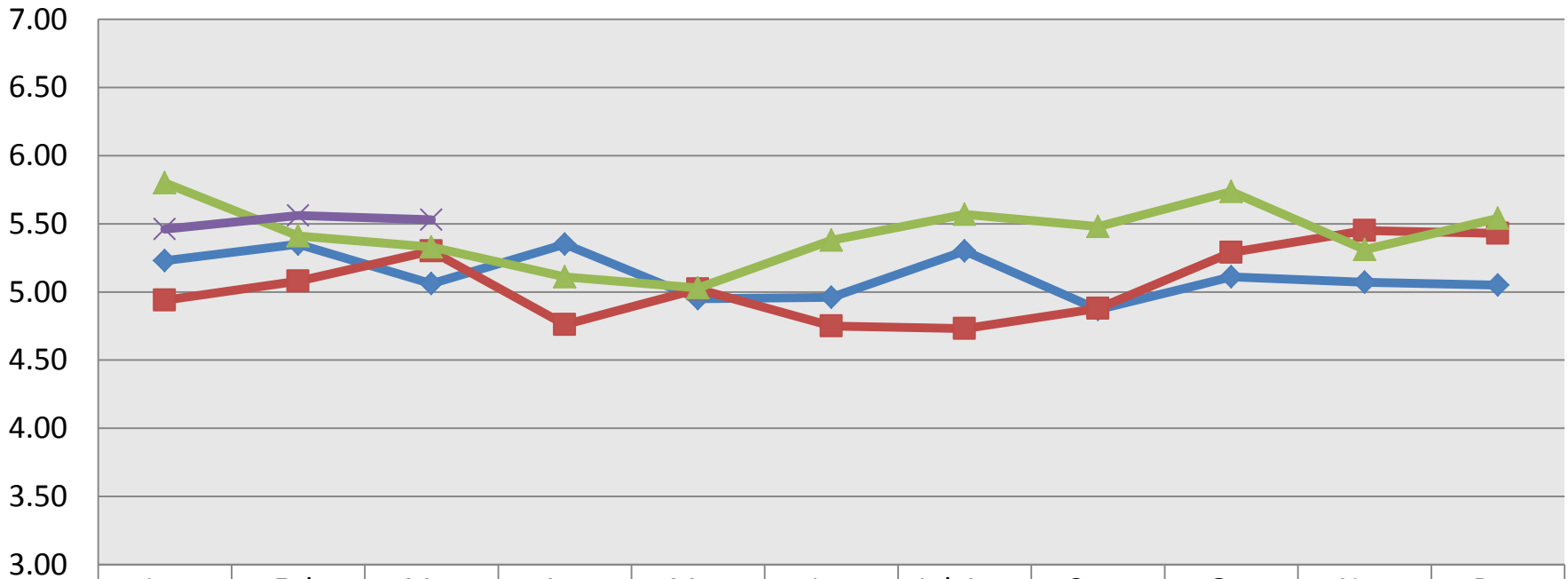
Global GFIE Index (France + Export)



	Jan	Feb	Mar	Apr	May	Jun	Jul-Aug	Sept	Oct	Nov	Dec
2012	214.05	248.69	254.93	225.13	195.88	202.54	203.81	224.76	208.16	200.74	187.77
2013	212.34	167.47	205.88	237.66	204.89	228.38	199.27	226.82	241.24	207.94	249.58
2014	241.27	233.14	234.25	207.82	238.08	179.12	273.33	293.37	210.55	184.61	191.46
2015	193.67	189.05	288.52								

GFIE Index March 2015

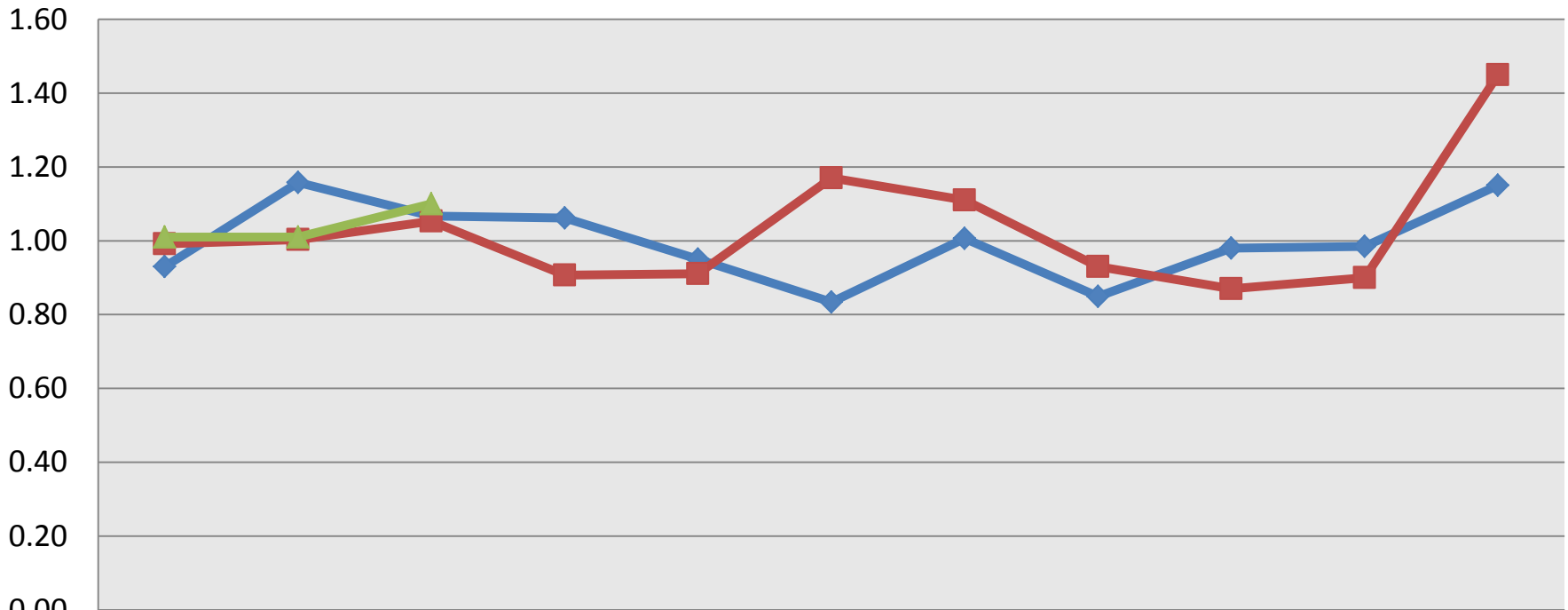
Trust Index



	Jan	Feb	Mar	Apr	May	Jun	Jul-Aug	Sept	Oct	Nov	Dec
◆ 2012	5.23	5.35	5.06	5.35	4.95	4.96	5.30	4.87	5.11	5.07	5.05
■ 2013	4.94	5.08	5.30	4.76	5.02	4.75	4.73	4.88	5.29	5.45	5.43
▲ 2014	5.80	5.41	5.33	5.11	5.03	5.38	5.57	5.48	5.74	5.31	5.54
✕ 2015	5.46	5.56	5.53								

GFIE Index March 2015

Book Bill



	Jan	Feb	Mar	Apr	May	Jun	Jul-Aug	Sep	Oct	Nov	Dec
2013	0.93	1.16	1.07	1.06	0.95	0.83	1.01	0.85	0.98	0.99	1.15
2014	0.99	1.00	1.05	0.91	0.91	1.17	1.11	0.93	0.87	0.90	1.45
2015	1.01	1.01	1.10								