



# GFIE Index June 2015



## Comments from M. Pierre-Jean Albrieux, President of GFIE

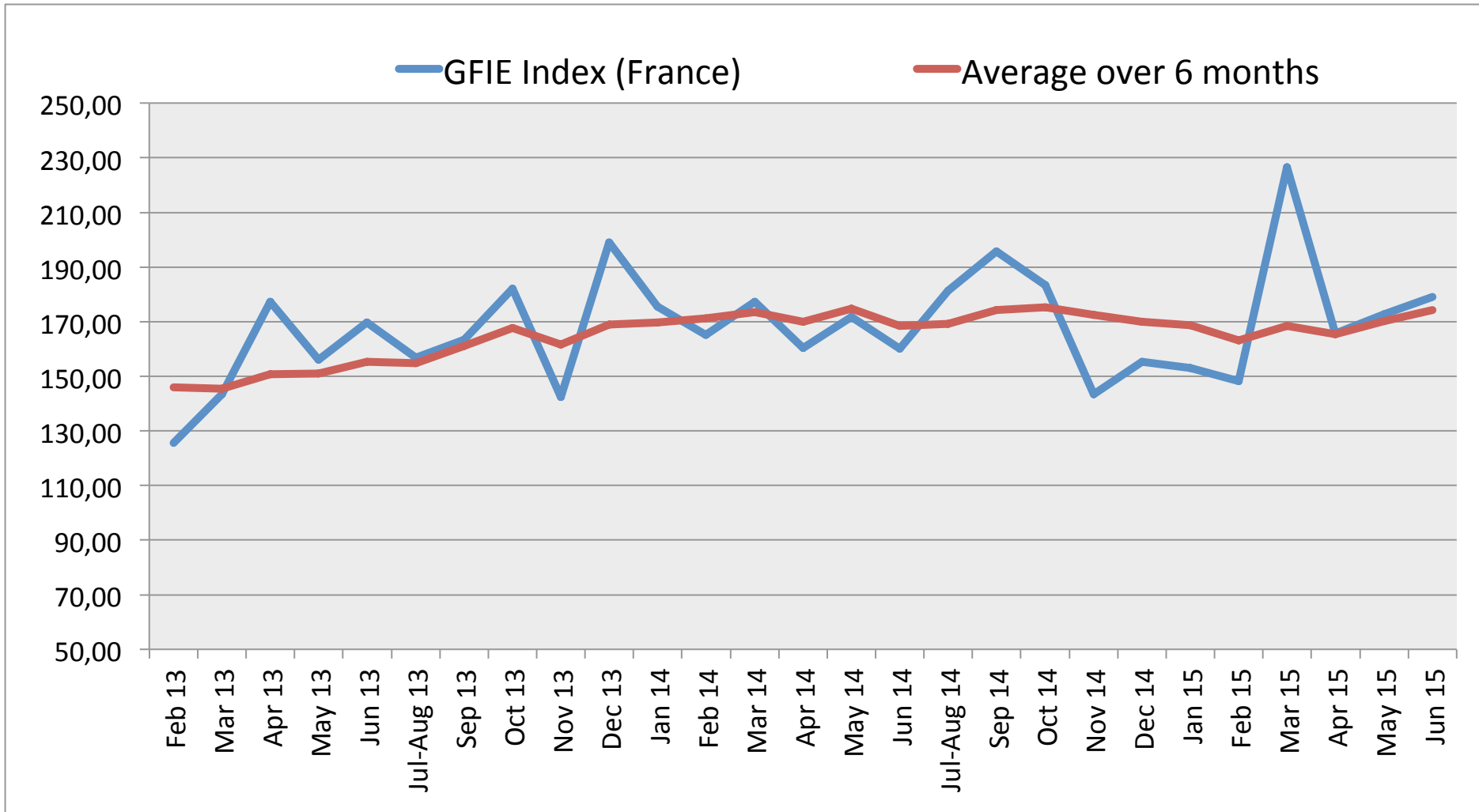
« The approach of the holidays season has surely an impact on the confidence index. It has rose from 5.36 last month to 5.73 in spite of our pretty stable indexes and the slowly growing 3.5% France index. We are in a good mood and that is all that matters because it means that the prospects are founded ; even though it may not always appear in the figures. It must be born in mind the electronic applications' developpement is certain. They are supported, amongst other things, by the digitalisation and communication of objects. I wish you all a nice summer vacation, we will need it in order to face every exhibitions during the second half of the year (Enova, Productronica, Midest, etc.) ».

Trust Index	France Index variation over May 2015	BookBill
5,73	+3,56%	1,01

	Jun 14	Jul-Aug 14	Sep 14	Oct 14	Nov 14	Dec 14	Jan 15	Feb 15	Mar 15	Apr 15	May 15	Jun 15
France GFIE Index	160,02	181,24	195,74	183,30	143,44	155,29	153,10	148,17	226,60	165,75	172,82	178,97
Average over 6 months	168,36	169,30	174,37	175,39	172,58	169,84	168,69	163,17	168,32	165,39	170,29	174,24

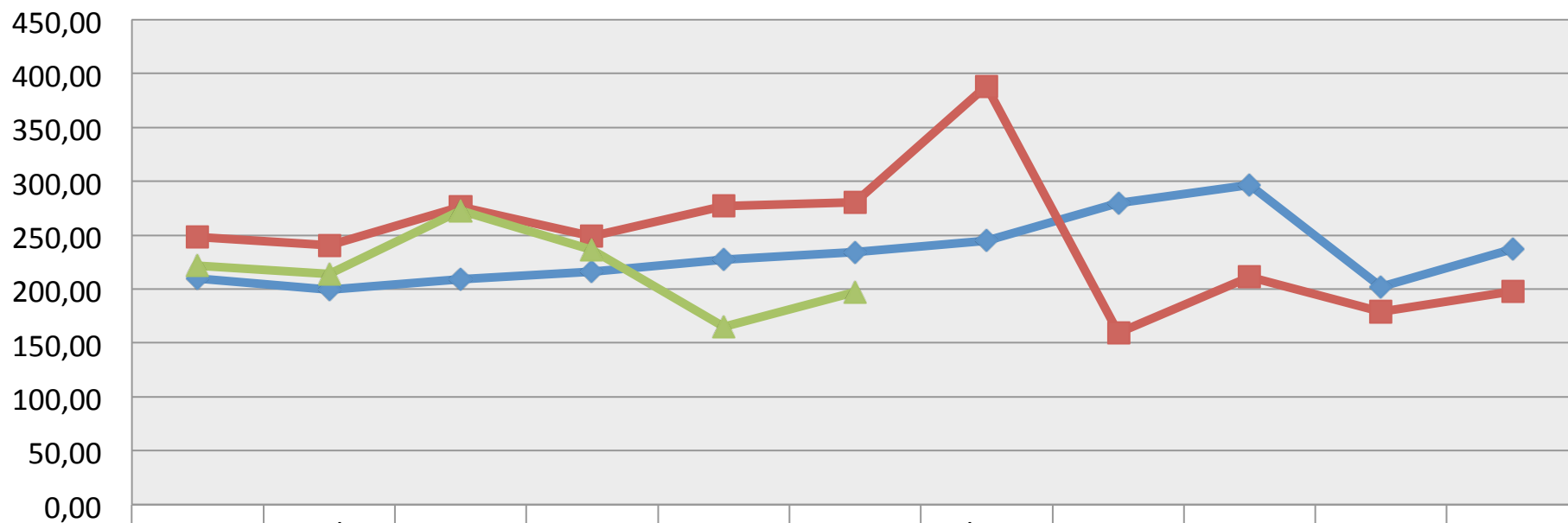


# GFIE Index June 2015



# GFIE Index June 2015

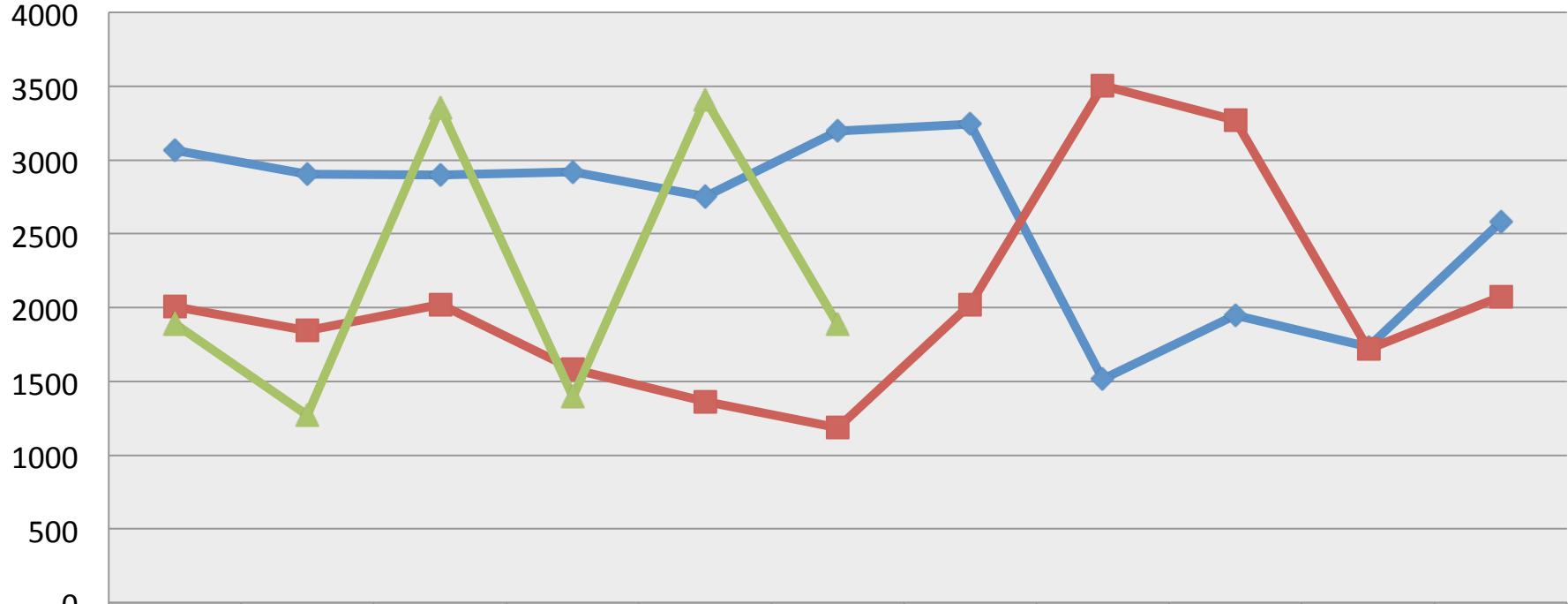
**Electronic Goods, Tools and Equipment (<5 000€) Index (France)**



	Jan	Feb	Mar	Apr	May	Jun	Jul-Aug	Sept	Oct	Nov	Dec
2013	210,02	199,46	209,13	215,82	227,22	234,09	244,94	279,53	296,72	202,12	236,92
2014	248,13	240,60	276,00	249,13	277,02	280,86	388,62	159,30	211,56	179,14	197,64
2015	221,54	213,82	272,97	236,20	164,71	197,42					

# GFIE Index June 2015

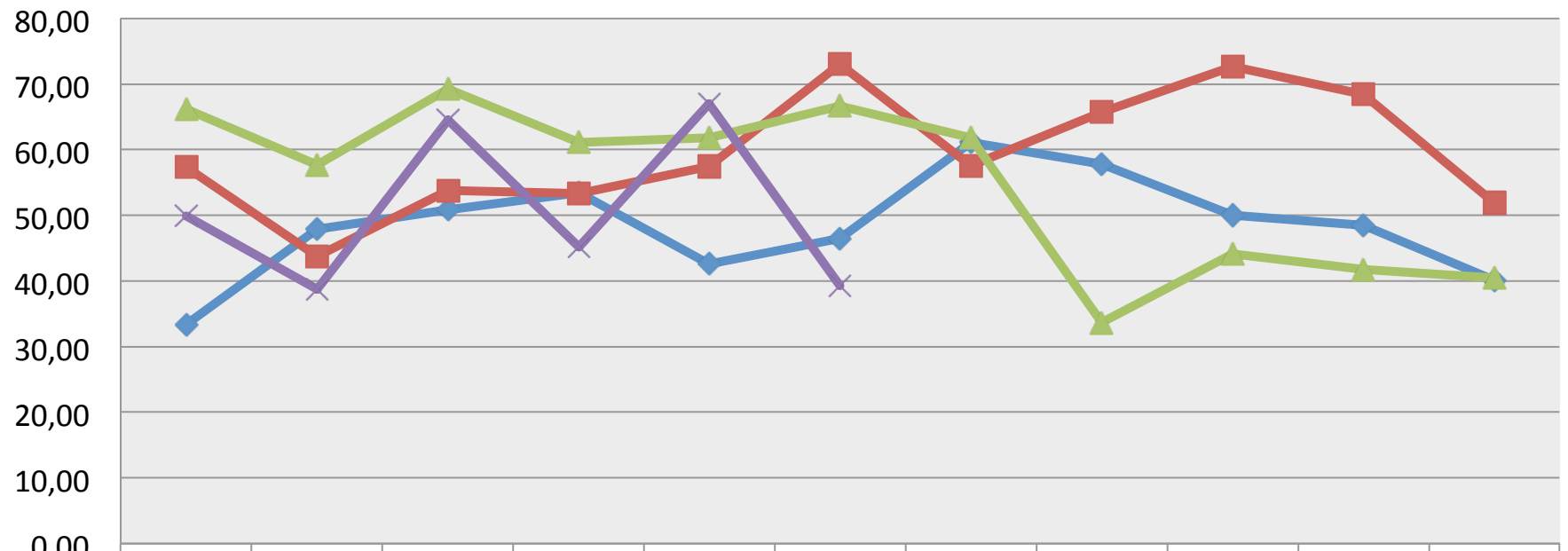
**Machines, Products and Services to production Index (France)**



	Jan	Feb	Mar	Apr	May	Jun	Jul-Aug	Sept	Oct	Nov	Dec
◆ 2013	3064	2906	2899	2917	2753	3199	3245	1515	1946	1735	2578
■ 2014	2006	1845	2021	1584	1361	1185	2024	3506	3270	1718	2072
▲ 2015	1889	1271	3352	1393	3410	1883					

# GFIE Index June 2015

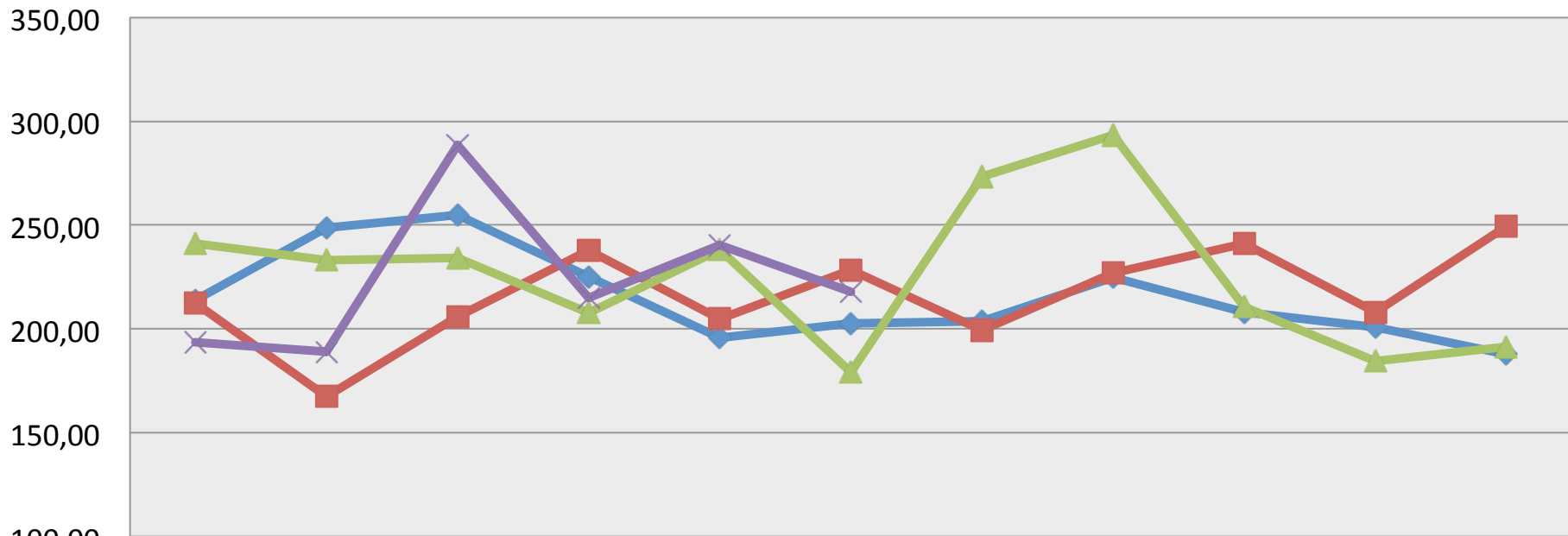
## Export Index



	Jan	Feb	Mar	Apr	May	Jun	Jul-Aug	Sept	Oct	Nov	Dec
2012	33,34	47,86	50,89	53,38	42,60	46,48	61,13	57,83	49,99	48,54	40,09
2013	57,33	43,71	53,83	53,26	57,42	72,97	57,51	65,70	72,64	68,40	51,88
2014	66,13	57,69	69,26	61,14	61,86	66,65	61,84	33,67	44,15	41,76	40,50
2015	49,86	38,74	64,50	45,23	67,03	39,25					

# GFIE Index June 2015

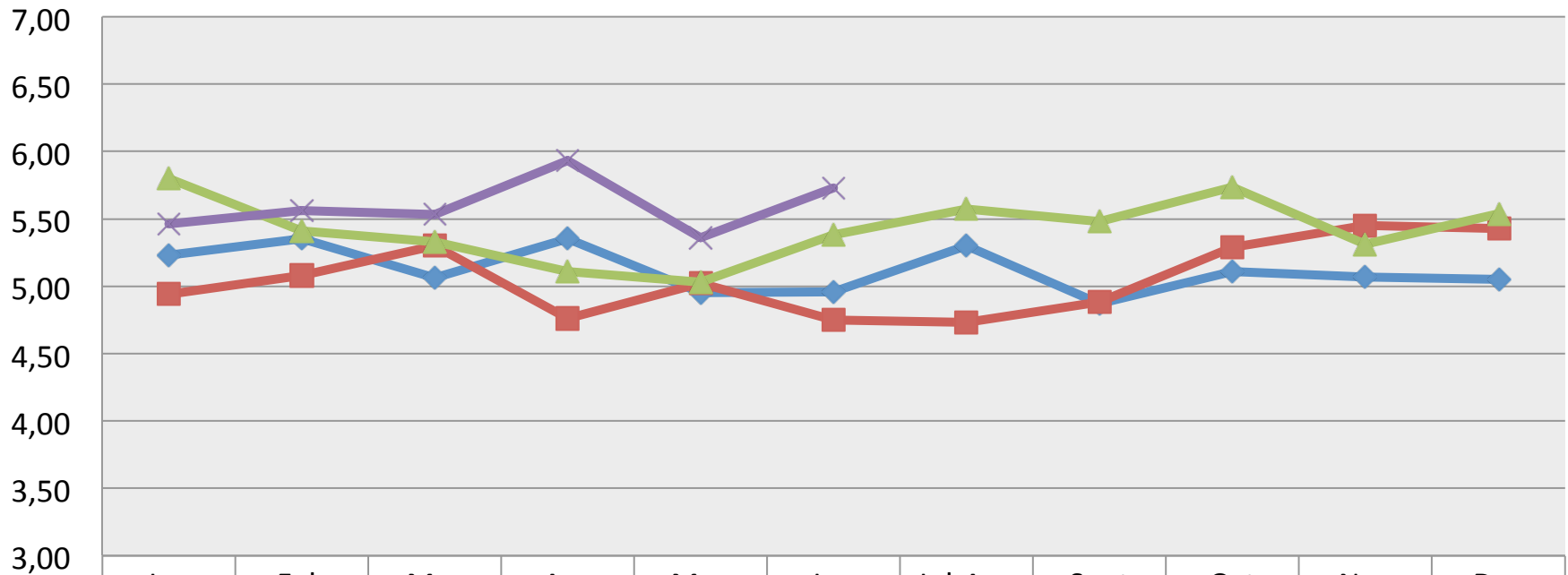
## Global GFIE Index (France + Export)



	Jan	Feb	Mar	Apr	May	Jun	Jul-Aug	Sept	Oct	Nov	Dec
◆ 2012	214,05	248,69	254,93	225,13	195,88	202,54	203,81	224,76	208,16	200,74	187,77
■ 2013	212,34	167,47	205,88	237,66	204,89	228,38	199,27	226,82	241,24	207,94	249,58
▲ 2014	241,27	233,14	234,25	207,82	238,08	179,12	273,33	293,37	210,55	184,61	191,46
✕ 2015	193,67	189,05	288,52	215,16	240,20	217,82					

# GFIE Index June 2015

**Trust Index**

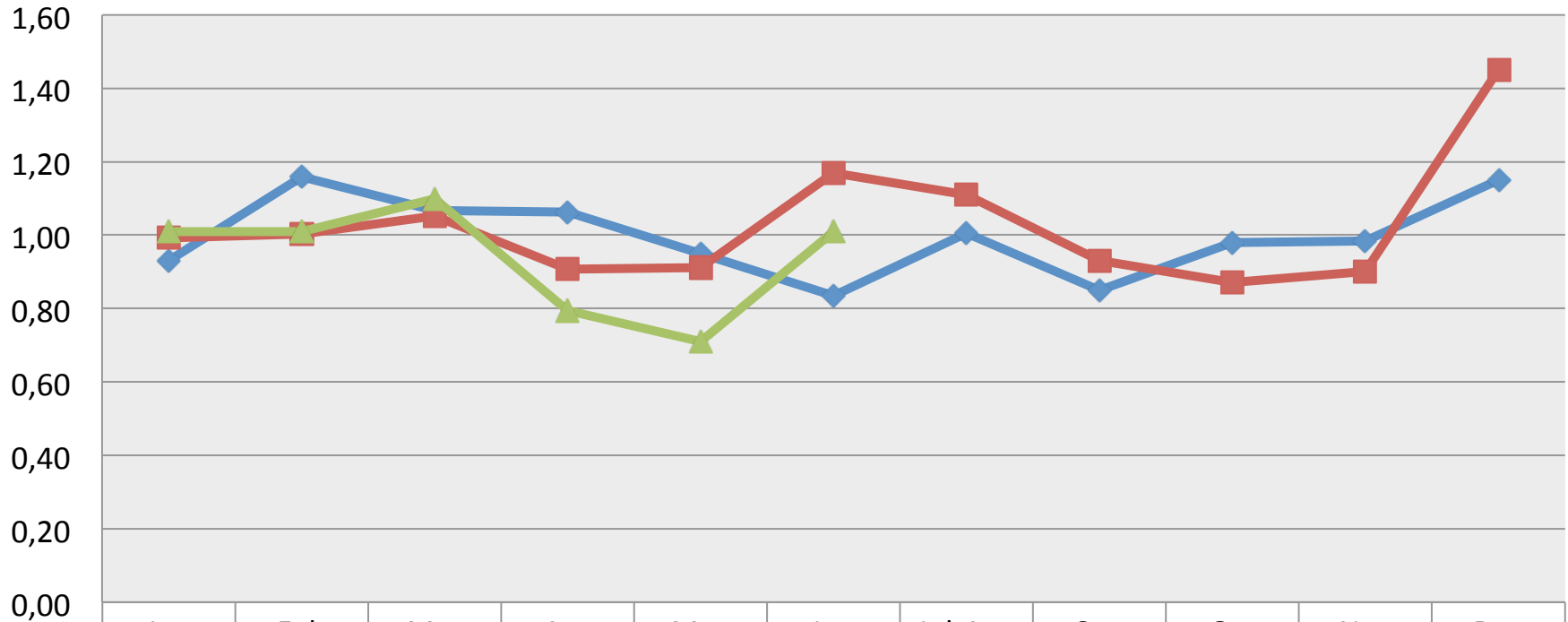


◆ 2012	5,23	5,35	5,06	5,35	4,95	4,96	5,30	4,87	5,11	5,07	5,05
■ 2013	4,94	5,08	5,30	4,76	5,02	4,75	4,73	4,88	5,29	5,45	5,43
▲ 2014	5,80	5,41	5,33	5,11	5,03	5,38	5,57	5,48	5,74	5,31	5,54
✕ 2015	5,46	5,56	5,53	5,93	5,36	5,73					



# GFIE Index June 2015

**Book Bill**



2013

2014

2015