



# GFIE Index July-August 2015

## Comments from M. Pierre-Jean Albrieux, President of GFIE

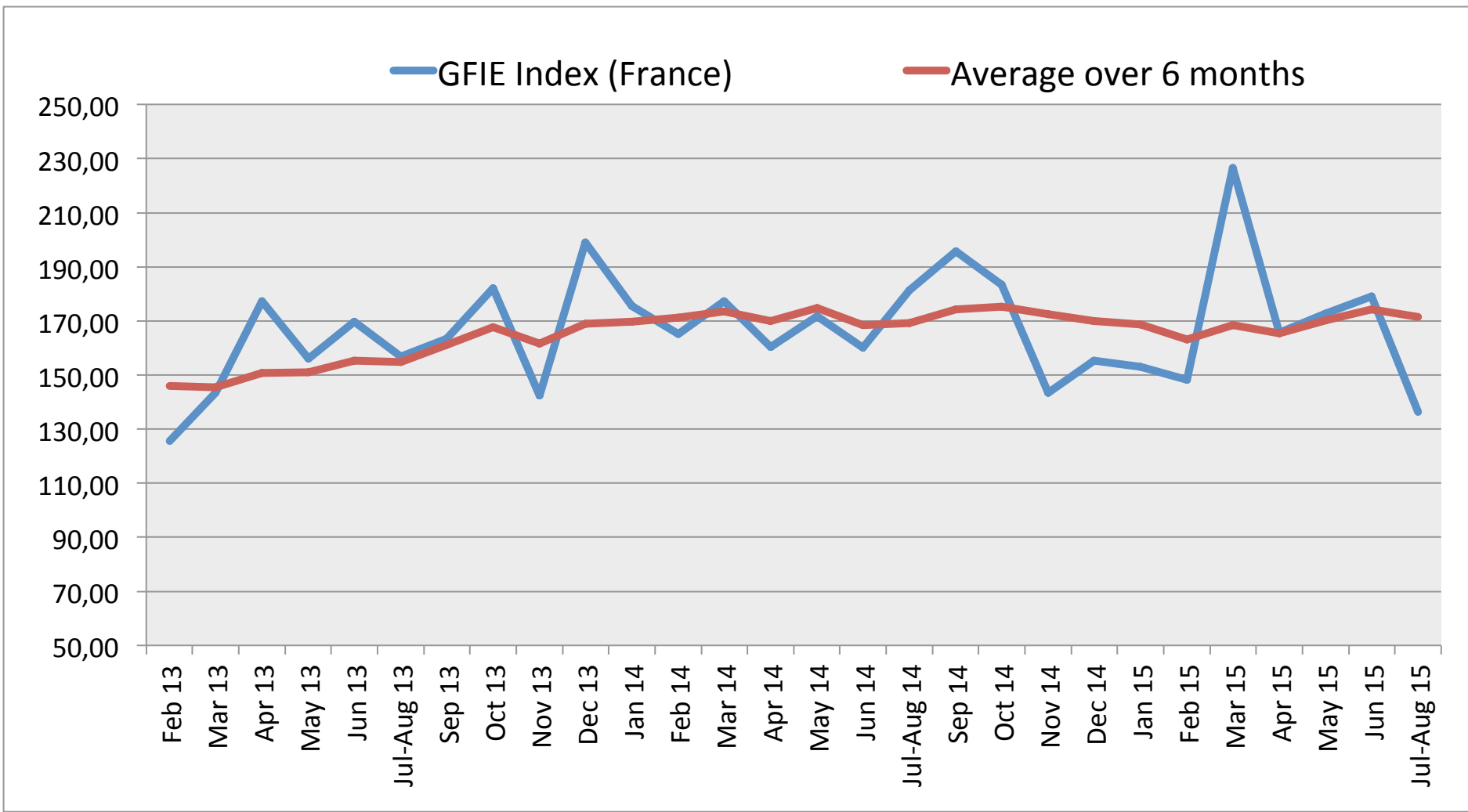
-23,82% for the France index and -28,81% pour the Global index as compared to the June index ; as we could say : « it hurts » and we have not seen this drop since 2011. The truth is that impressive indexes cannot be expected during the vacation period. However, we are under the 2012, 2013 and 2014 July-August indexes to name but the most recent. In fact, every index for these two months are at their lower level as compared to the last three years. Even the Confidence index is the weakest of 2015, even though it is still « high » reaching 5,31.

Trust Index	France Index variation over June 2015	BookBill
5,31	-23,82%	0,89

	Jul-Aug 14	Sep 14	Oct 14	Nov 14	Dec 14	Jan 15	Feb 15	Mar 15	Apr 15	May 15	Jun 15	Jul-A 15
France GFIE Index	181,24	195,74	183,30	143,44	155,29	153,10	148,17	226,60	165,75	172,82	178,97	136,34
Average over 6 months	169,30	174,37	175,39	172,58	169,84	168,69	163,17	168,32	165,39	170,29	174,24	171,44

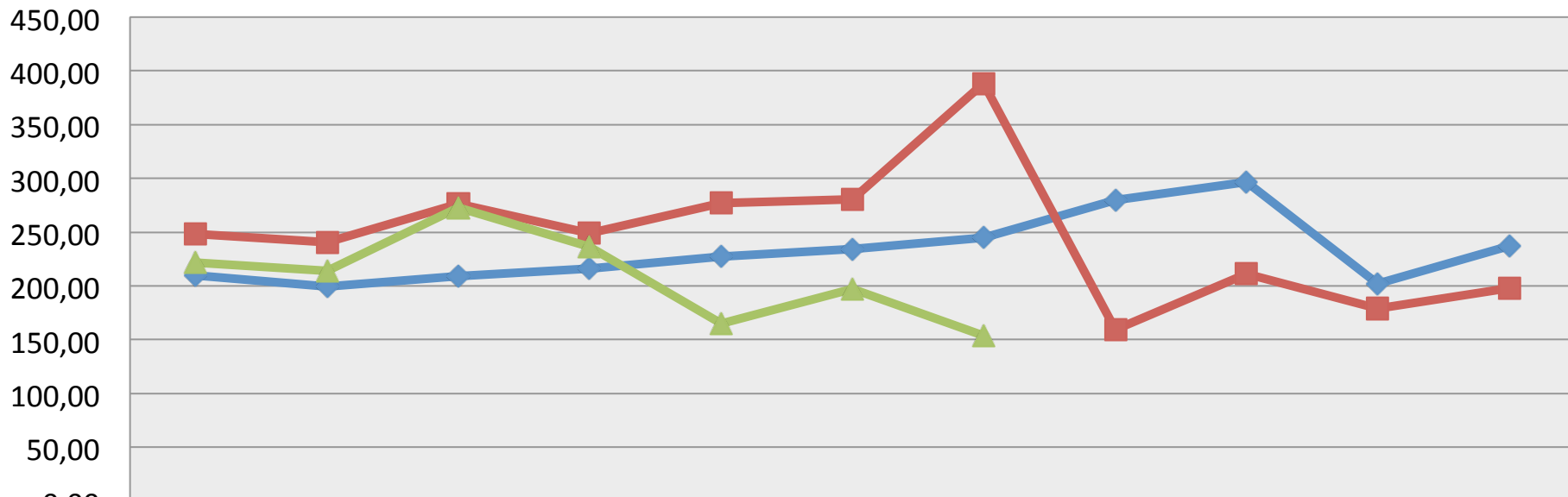


# GFIE Index July-August 2015



# GFIE Index July-August 2015

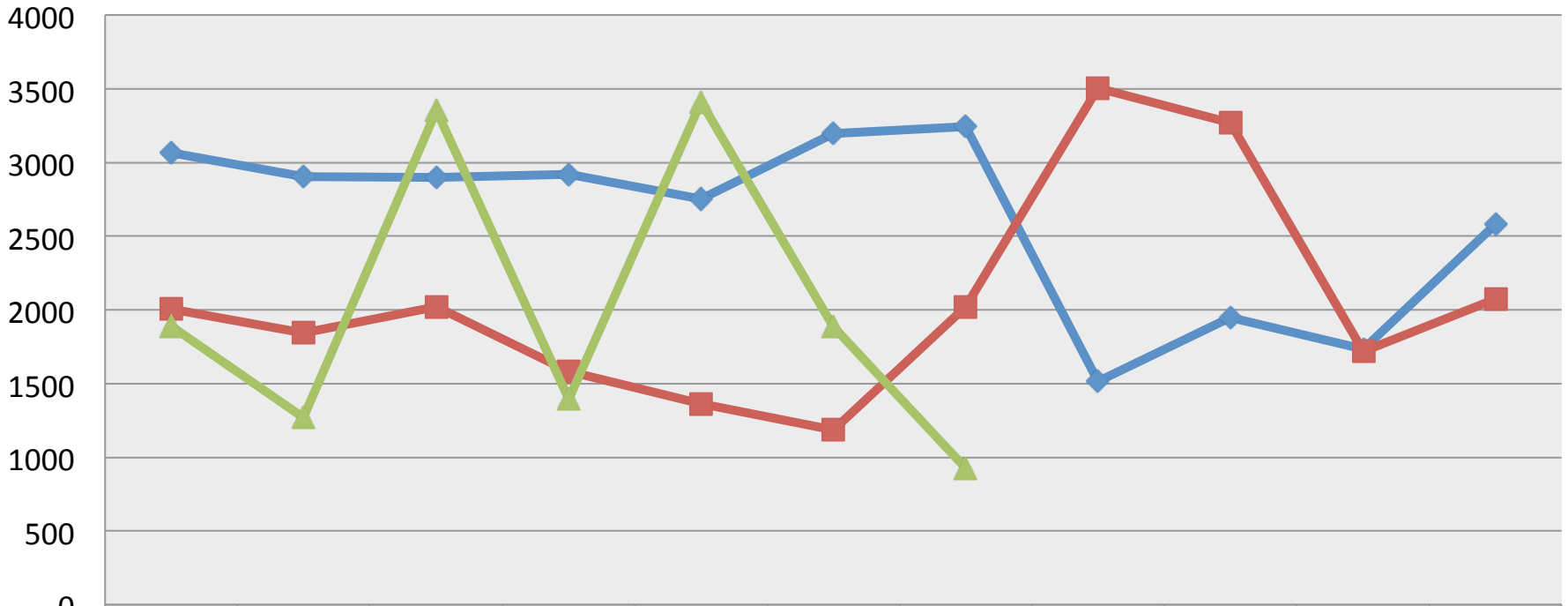
**Electronic Goods, Tools and Equipment (<5 000€) Index (France)**



	Jan	Feb	Mar	Apr	May	Jun	Jul-Aug	Sept	Oct	Nov	Dec
◆ 2013	210,02	199,46	209,13	215,82	227,22	234,09	244,94	279,53	296,72	202,12	236,92
■ 2014	248,13	240,60	276,00	249,13	277,02	280,86	388,62	159,30	211,56	179,14	197,64
▲ 2015	221,54	213,82	272,97	236,20	164,71	197,42	153,75				

# GFIE Index July-August 2015

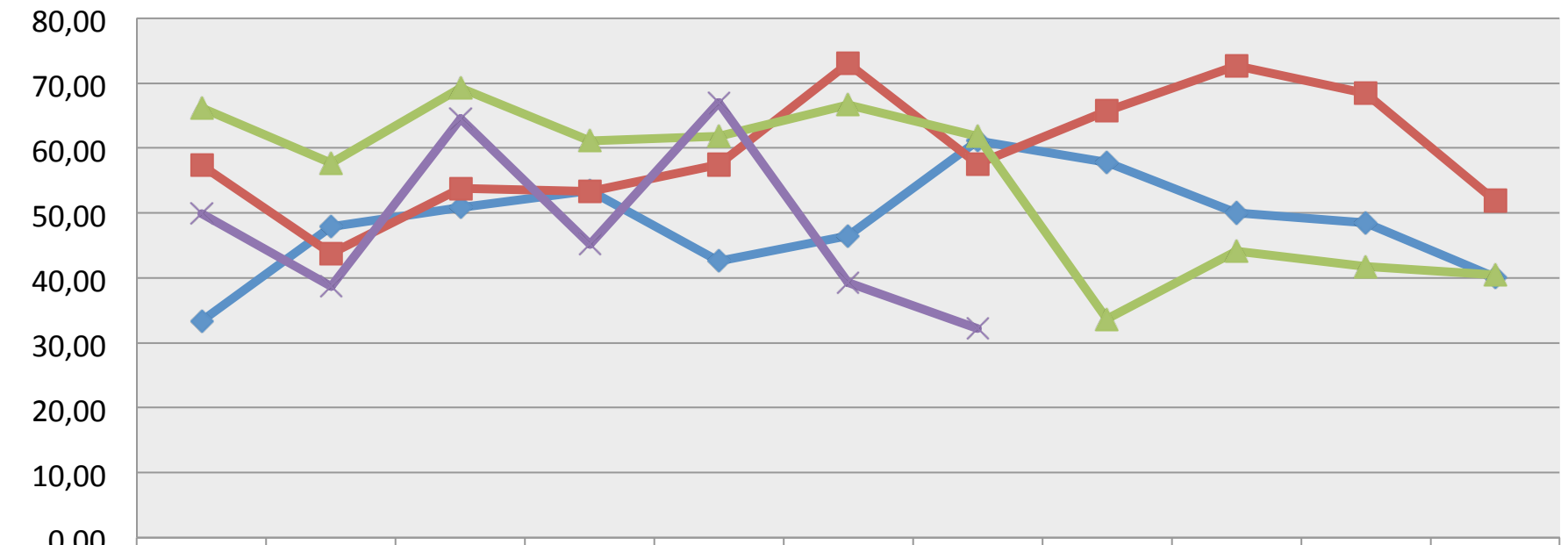
**Machines, Products and Services to production Index (France)**



	Jan	Feb	Mar	Apr	May	Jun	Jul-Aug	Sept	Oct	Nov	Dec
◆ 2013	3064	2906	2899	2917	2753	3199	3245	1515	1946	1735	2578
■ 2014	2006	1845	2021	1584	1361	1185	2024	3506	3270	1718	2072
▲ 2015	1889	1271	3352	1393	3410	1883	926				

# GFIE Index July-August 2015

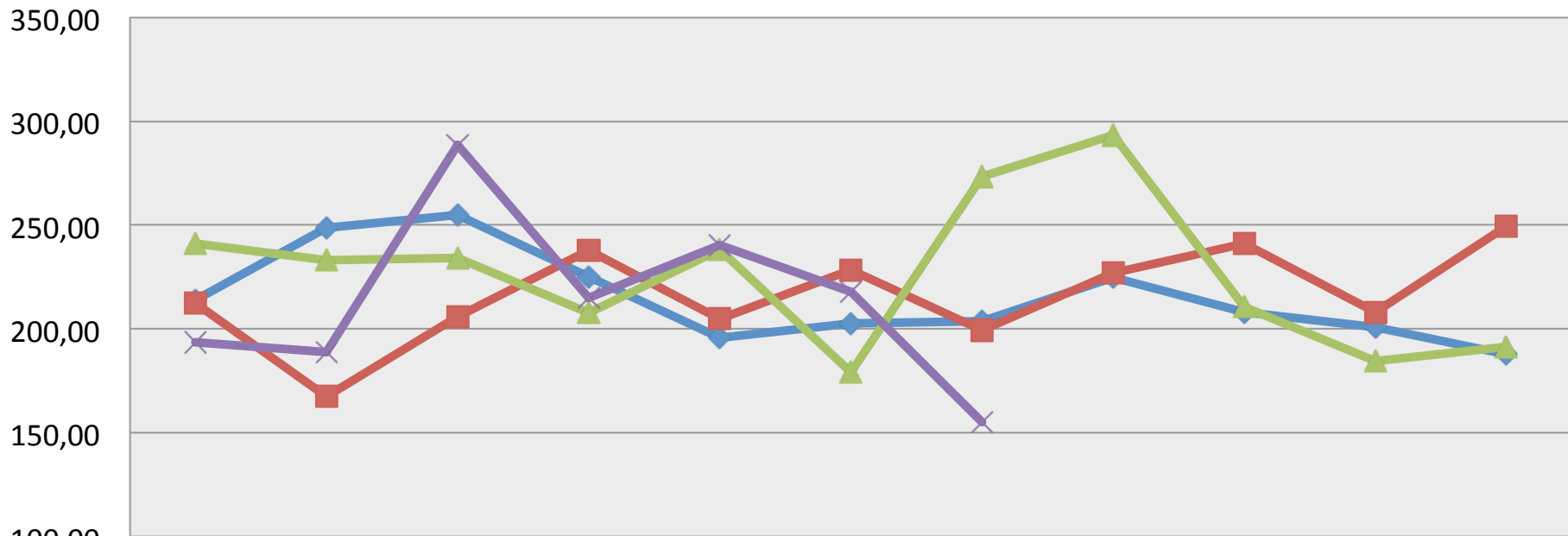
**Export Index**



	Jan	Feb	Mar	Apr	May	Jun	Jul-Aug	Sept	Oct	Nov	Dec
2012	33,34	47,86	50,89	53,38	42,60	46,48	61,13	57,83	49,99	48,54	40,09
2013	57,33	43,71	53,83	53,26	57,42	72,97	57,51	65,70	72,64	68,40	51,88
2014	66,13	57,69	69,26	61,14	61,86	66,65	61,84	33,67	44,15	41,76	40,50
2015	49,86	38,74	64,50	45,23	67,03	39,25	32,18				

# GFIE Index July-August 2015

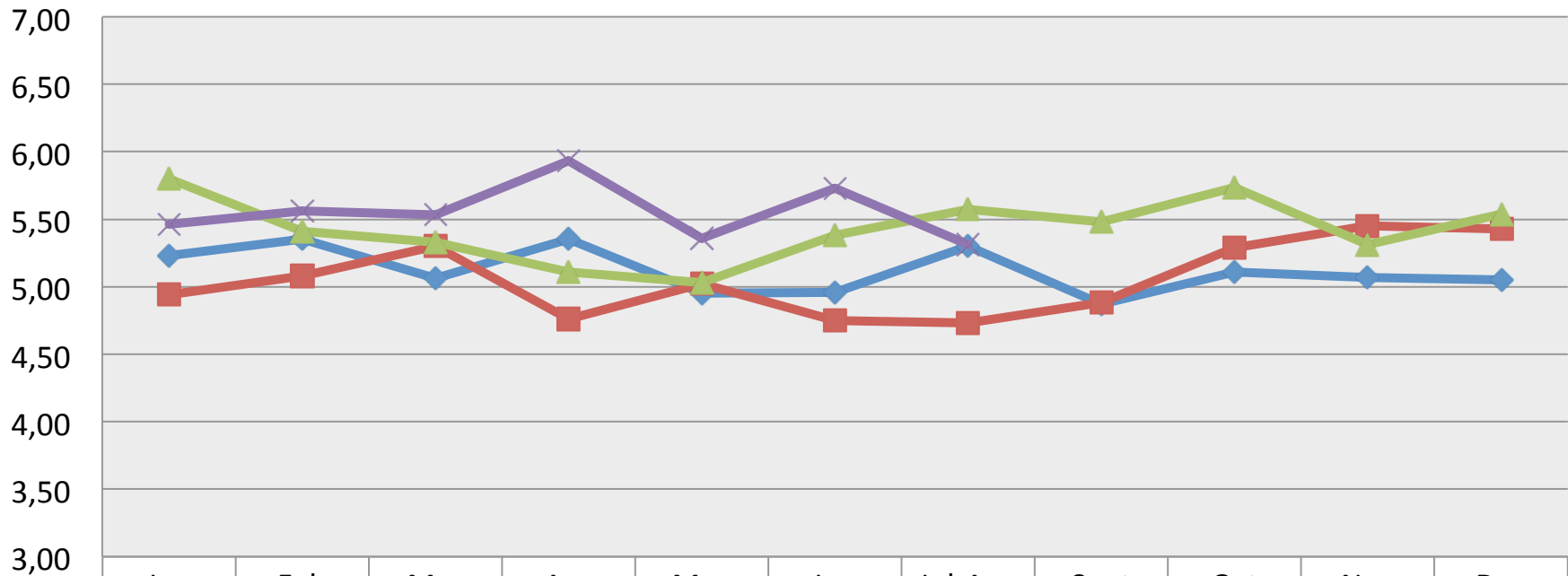
**Global GFIE Index (France + Export)**



	Jan	Feb	Mar	Apr	May	Jun	Jul-Aug	Sept	Oct	Nov	Dec
◆ 2012	214,05	248,69	254,93	225,13	195,88	202,54	203,81	224,76	208,16	200,74	187,77
■ 2013	212,34	167,47	205,88	237,66	204,89	228,38	199,27	226,82	241,24	207,94	249,58
▲ 2014	241,27	233,14	234,25	207,82	238,08	179,12	273,33	293,37	210,55	184,61	191,46
✕ 2015	193,67	189,05	288,52	215,16	240,20	217,82	155,07				

# GFIE Index July-August 2015

**Trust Index**

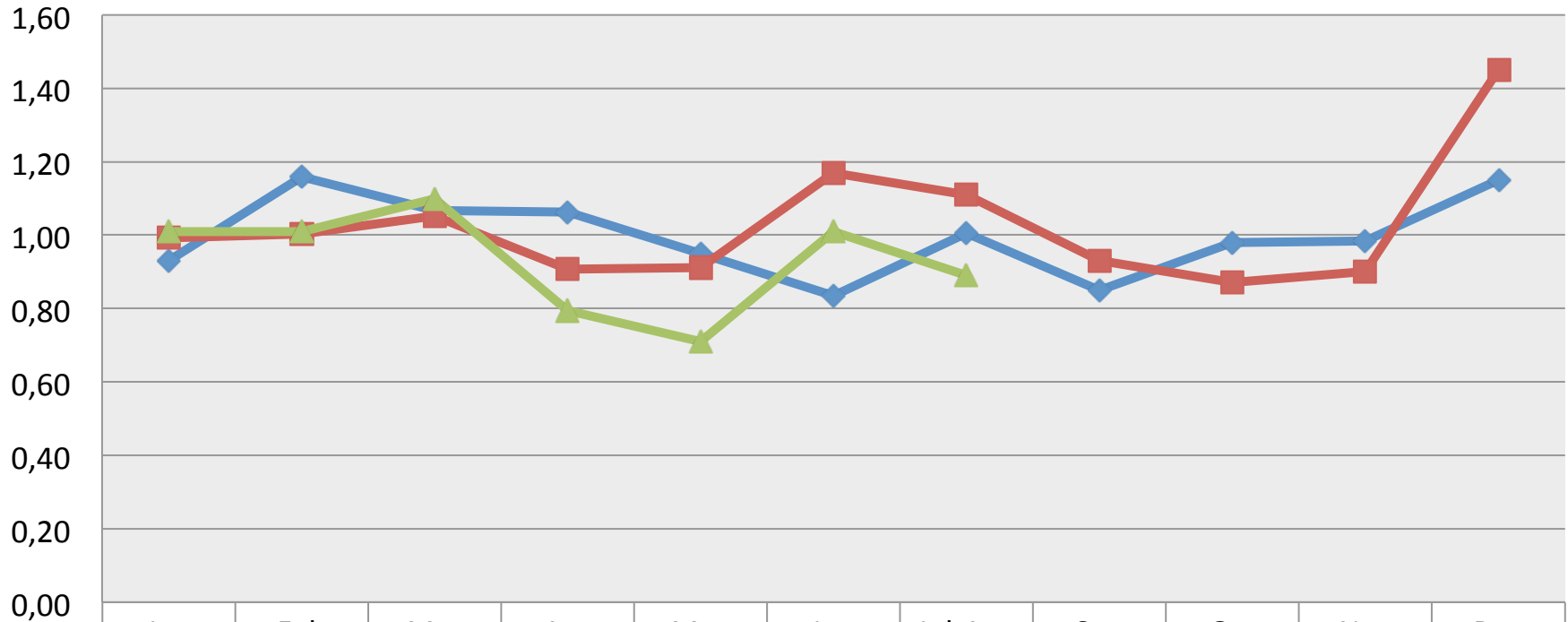


◆ 2012	5,23	5,35	5,06	5,35	4,95	4,96	5,30	4,87	5,11	5,07	5,05
■ 2013	4,94	5,08	5,30	4,76	5,02	4,75	4,73	4,88	5,29	5,45	5,43
▲ 2014	5,80	5,41	5,33	5,11	5,03	5,38	5,57	5,48	5,74	5,31	5,54
✕ 2015	5,46	5,56	5,53	5,93	5,36	5,73	5,31				



# GFIE Index July-August 2015

**Book Bill**



2013

2014

2015