



GFIE Index December 2014



Comments from M. Pierre-Jean Albrieux, President of the GFIE

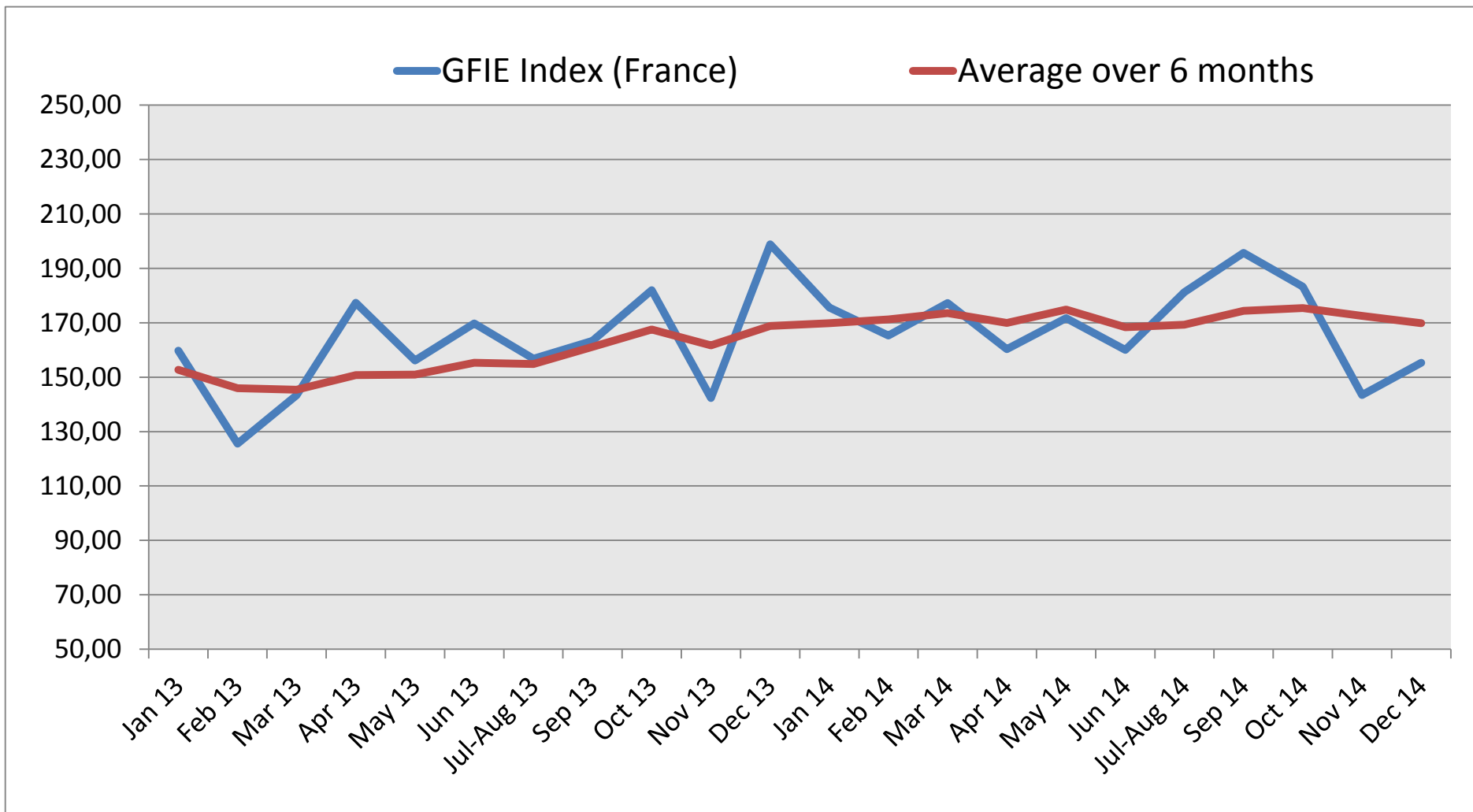
If the month of November has become the usual worst month of the year, December 2014 – with modest increases for the France Index (8.26%) and for the global Index (3.71%) – distinguished itself by exceptional new orders figures. This is clear in the members’ commentaries and in the level of the BookBill Index which has never been so high since its creation in April 2008. Therefore, the trust index goes up to 5.54 and is a good omen for early 2015. As there is no salvation without electronics, any hope is admissible.

Trust Index	France Index variation over November 2014	BookBill
5,54	8,26%	1,45

	Jan 14	Feb 14	Mar 14	Apr 14	May 14	Jun 14	Jul-Aug 14	Sep 14	Oct 14	Nov 14	Dec 14
France GFIE Index	175,60	165,27	177,24	160,26	171,74	160,02	181,24	195,74	183,30	143,44	155,29
Average over 6 months	169,83	171,24	173,55	169,59	174,84	168,36	169,30	174,37	175,39	172,58	169,84

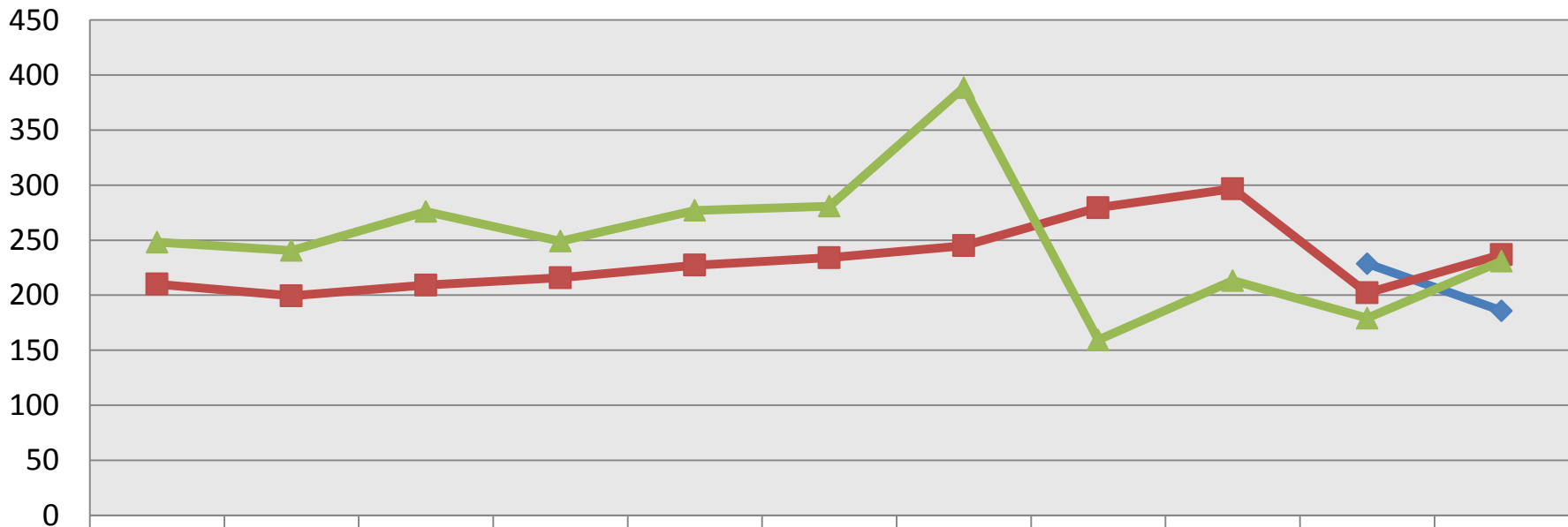


GFIE Index December 2014



GFIE Index December 2014

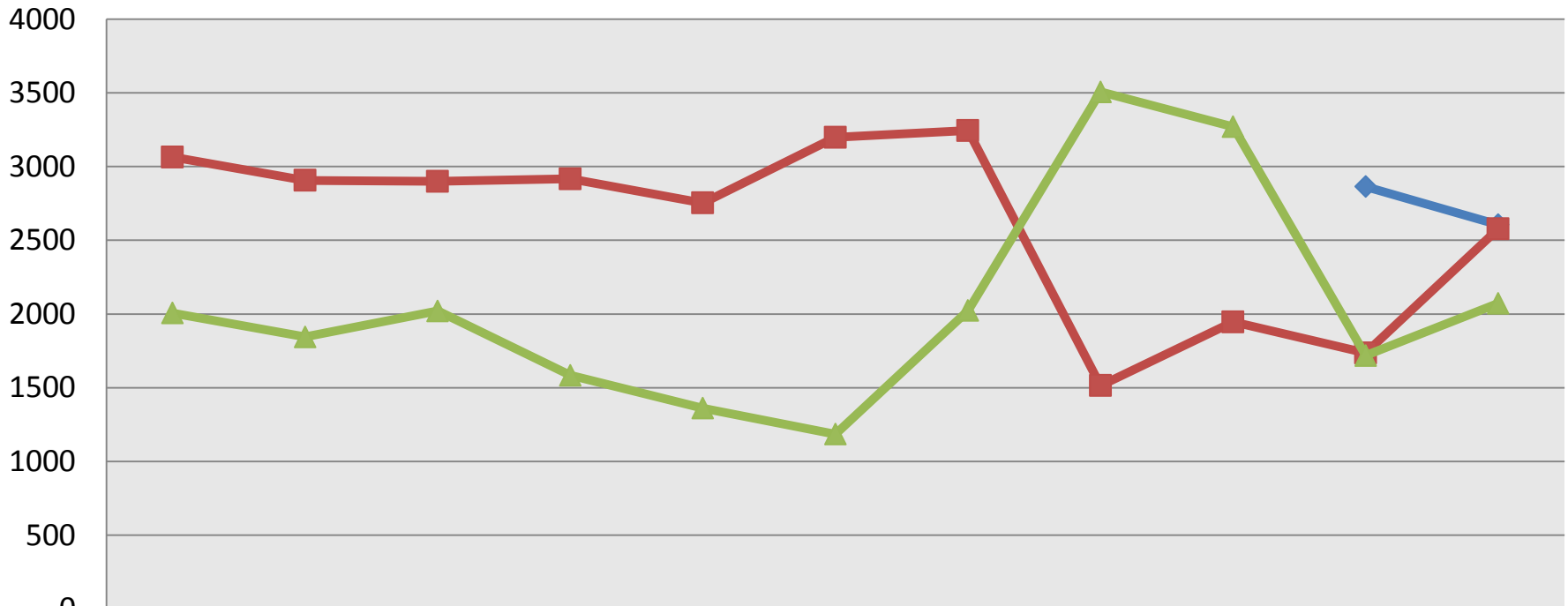
Electronic Goods, Tools and Equipment (<5 000 €) Index (France)



	Jan	Feb	Mar	Apr	May	Jun	Jul-Aug	Sept	Oct	Nov	Dec
2012										228,66	185,82
2013	210,02	199,46	209,13	215,82	227,22	234,09	244,94	279,53	296,72	202,12	236,92
2014	248,13	240,60	276,00	249,13	277,02	280,86	388,62	159,30	213,27	179,14	230,96

GFIE Index December 2014

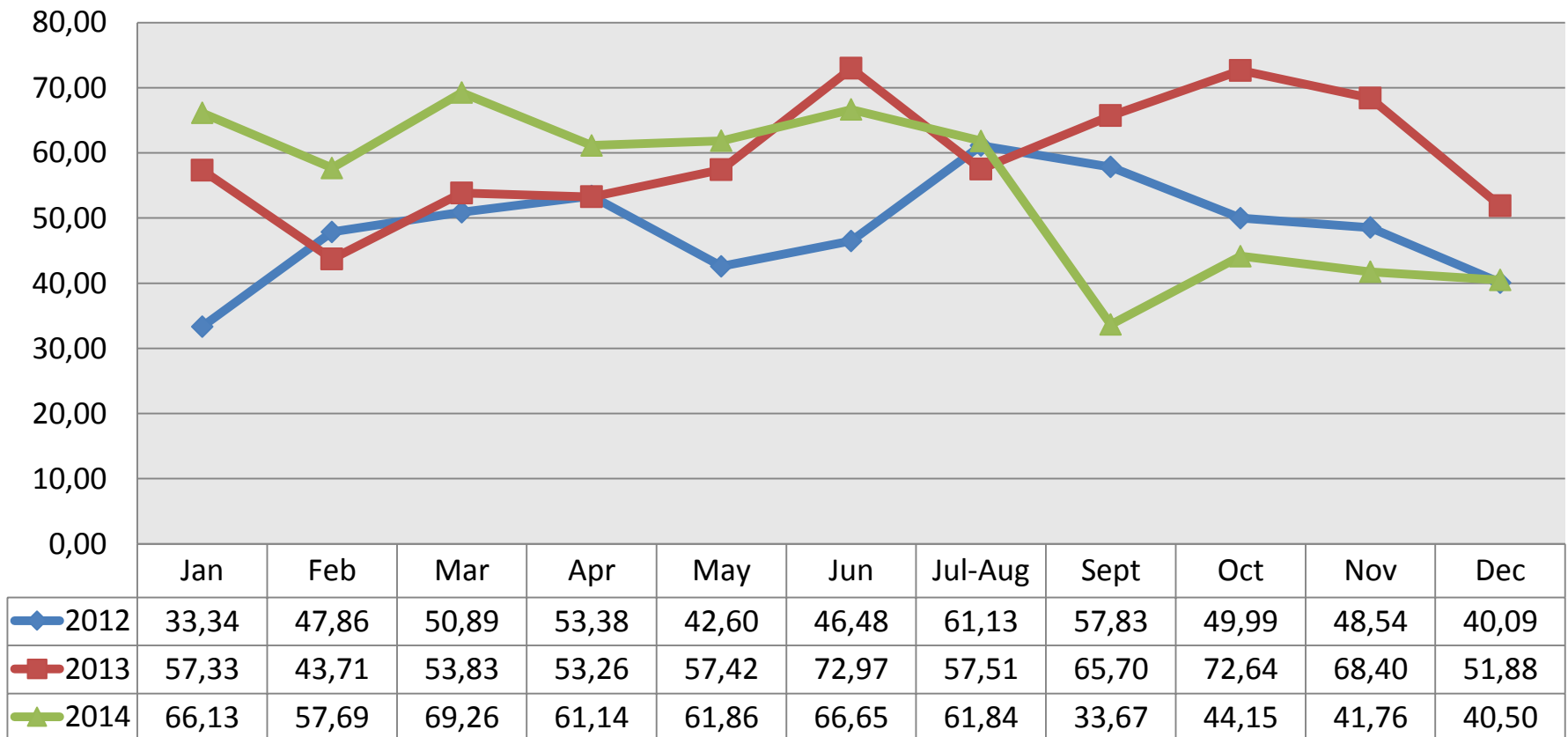
Machines, Products and Services to production Index (France)



	Jan	Feb	Mar	Apr	May	Jun	Jul-Aug	Sept	Oct	Nov	Dec
◆ 2012										2864	2606
■ 2013	3064	2906	2899	2917	2753	3199	3245	1515	1946	1735	2578
▲ 2014	2006	1845	2021	1584	1361	1185	2024	3506	3270	1718	2072

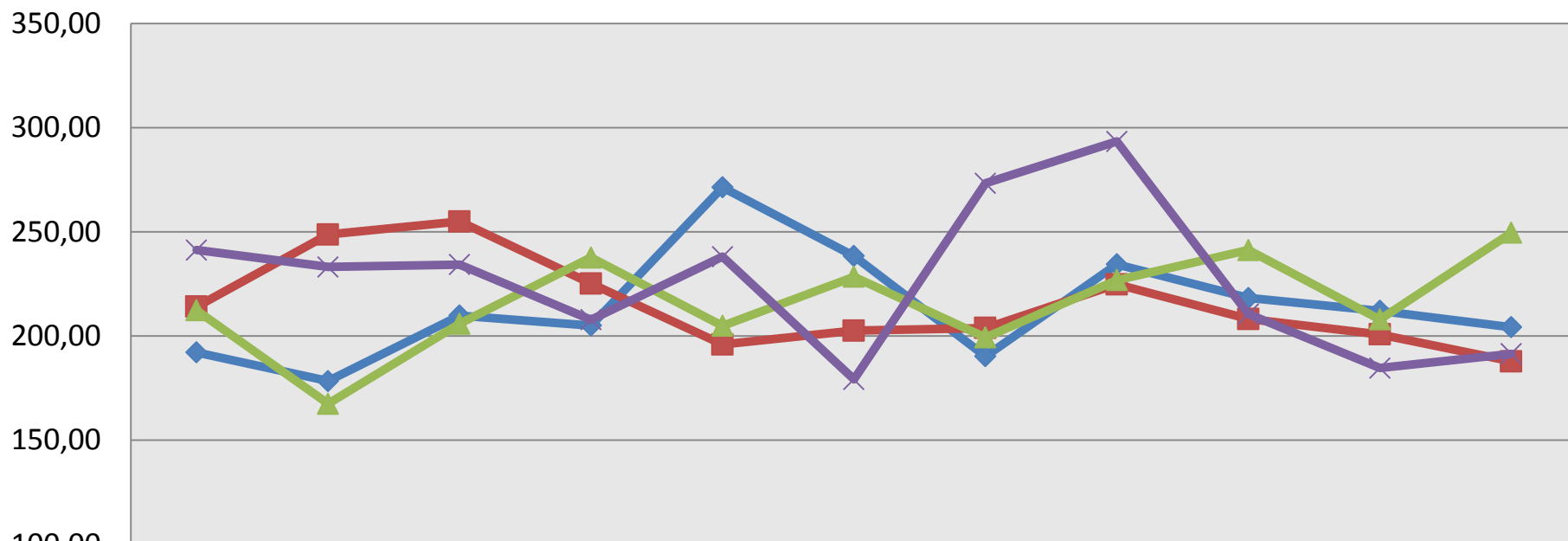
GFIE Index December 2014

Export Indice



GFIE Index December 2014

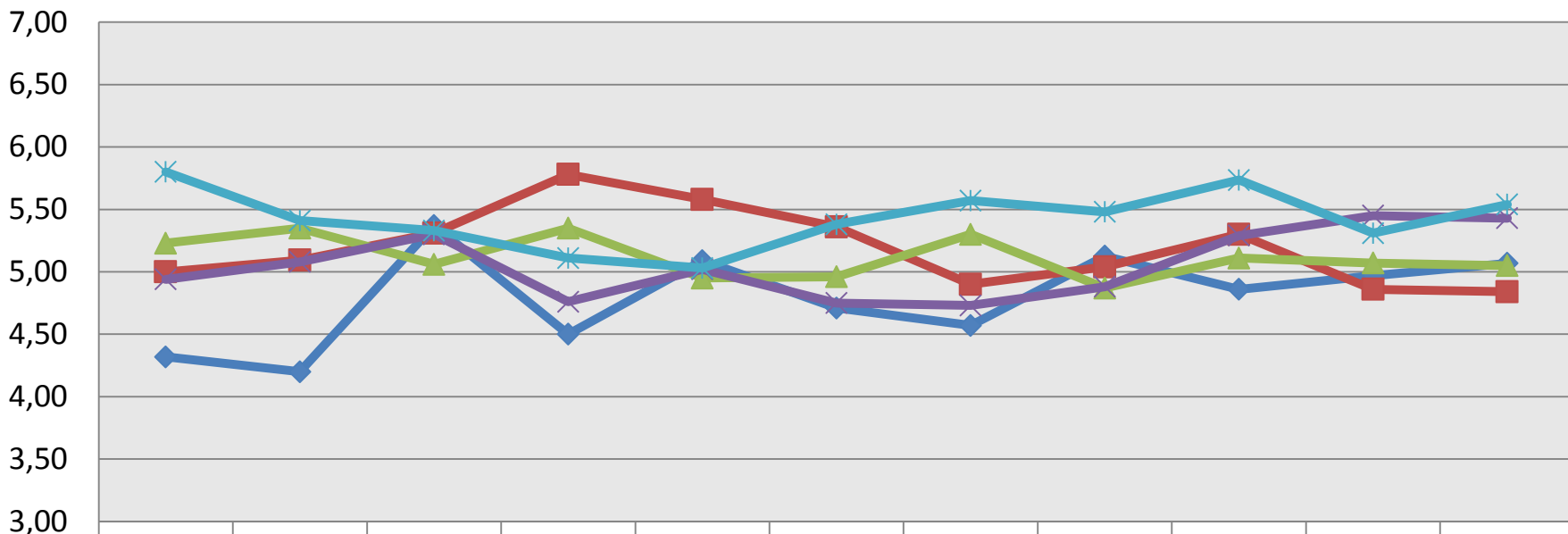
Global GFIE Index (France + Export) between 2011 & 2014



	Jan	Feb	Mar	Apr	May	Jun	Jul-Aug	Sept	Oct	Nov	Dec
◆ 2011	192,08	178,31	209,81	205,03	271,37	238,39	190,23	234,37	218,27	212,06	204,19
■ 2012	214,05	248,69	254,93	225,13	195,88	202,54	203,81	224,76	208,16	200,74	187,77
▲ 2013	212,34	167,47	205,88	237,66	204,89	228,38	199,27	226,82	241,24	207,94	249,58
× 2014	241,27	233,14	234,25	207,82	238,08	179,12	273,33	293,37	210,55	184,61	191,46

GFIE Index December 2014

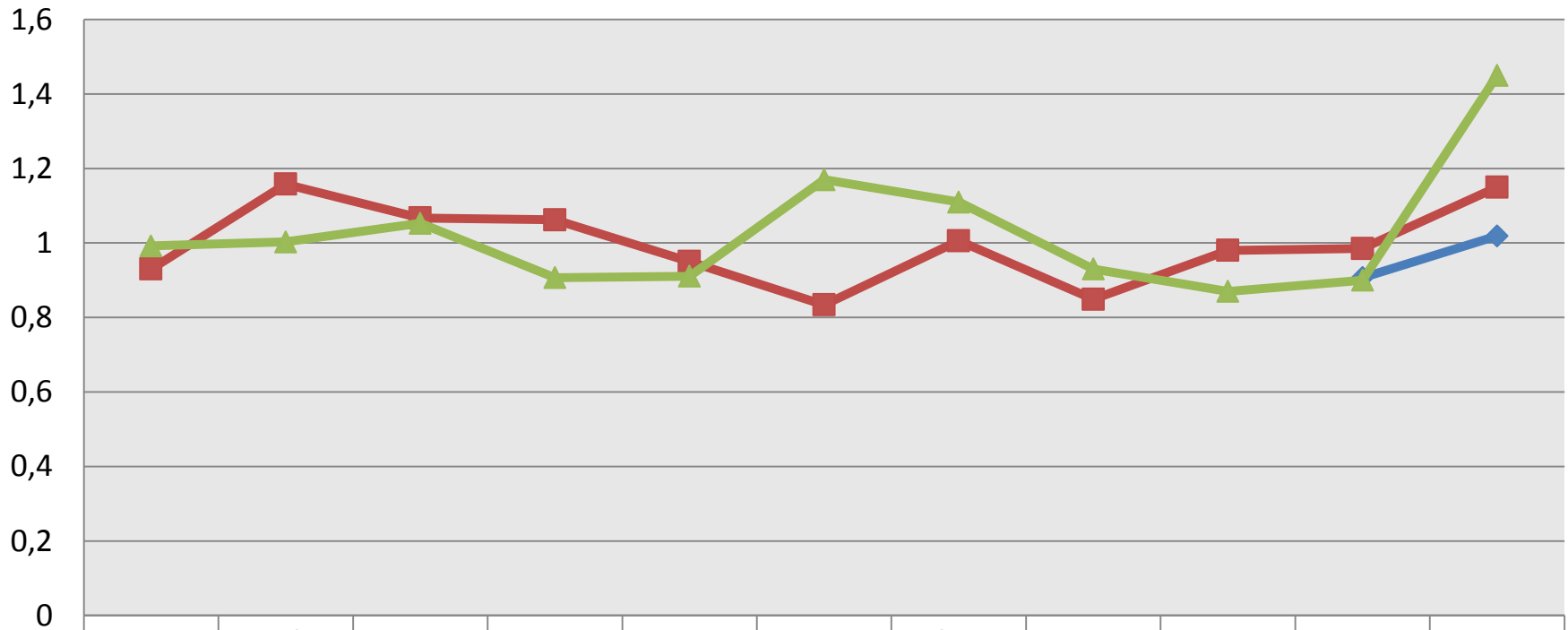
Trust Index



	Jan	Feb	Mar	Apr	May	Jun	Jul-Aug	Sept	Oct	Nov	Dec
◆ 2010	4,32	4,20	5,37	4,50	5,09	4,71	4,57	5,13	4,86	4,97	5,07
■ 2011	5,00	5,09	5,31	5,78	5,58	5,36	4,90	5,04	5,30	4,86	4,84
▲ 2012	5,23	5,35	5,06	5,35	4,95	4,96	5,30	4,87	5,11	5,07	5,05
✕ 2013	4,94	5,08	5,30	4,76	5,02	4,75	4,73	4,88	5,29	5,45	5,43
✧ 2014	5,80	5,41	5,33	5,11	5,03	5,38	5,57	5,48	5,74	5,31	5,54

GFIE Index December 2014

Book Bill



◆ 2012										0,91	1,02
■ 2013	0,93	1,16	1,07	1,06	0,95	0,83	1,01	0,85	0,98	0,99	1,15
▲ 2014	0,99	1,00	1,05	0,91	0,91	1,17	1,11	0,93	0,87	0,90	1,45