



# GFIE Index April 2015

## Comments from M. Pierre-Jean Albrieux, President of GFIE

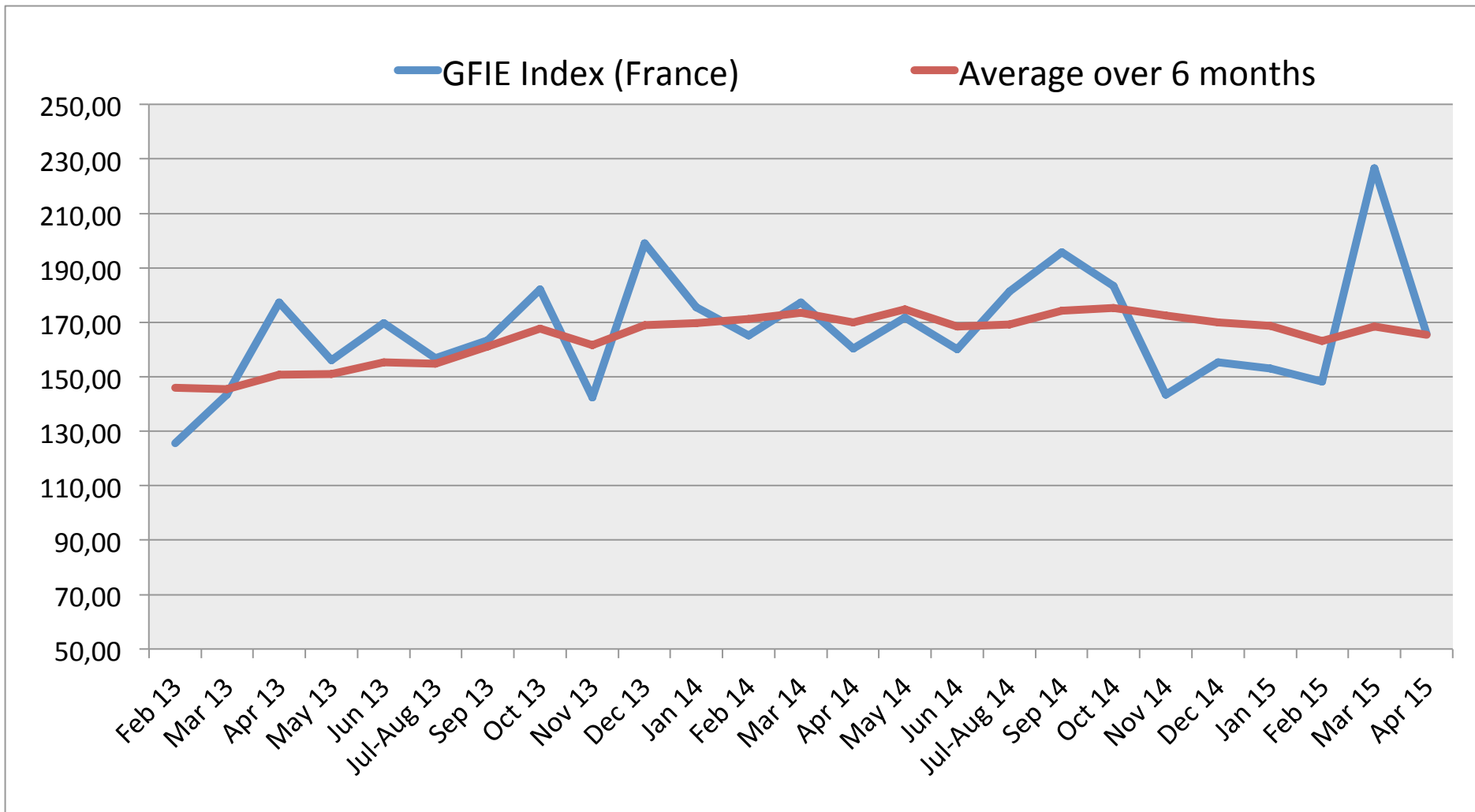
« In the wake of a particularly good index in March, we suspected that the next one would mark the occasion. Machines & services index is the main factor which has dragged down the global figures. Electronic goods, tools and equipment index has also decreased and you can tell by the fact that it is slightly under the April 2014 level that the activity is still established. 5,93 trust index, which has never been so high since we have begun this process, is a great sign. It eclipses the 5,80 from January 2014. Finally, we can notice that since June 2013 (4,75), trust index has slowly but surely tended to increase ».

Trust Index	France Index variation over March 2015	BookBill
5,93	-26,85%	0,794

	May 14	Jun 14	Jul-Aug 14	Sep 14	Oct 14	Nov 14	Dec 14	Jan 15	Feb 15	Mar 15	Apr 15
France GFIE Index	171,74	160,02	181,24	195,74	183,30	143,44	155,29	153,10	148,17	226,60	165,75
Average over 6 months	174,84	168,36	169,30	174,37	175,39	172,58	169,84	168,69	163,17	168,32	165,39

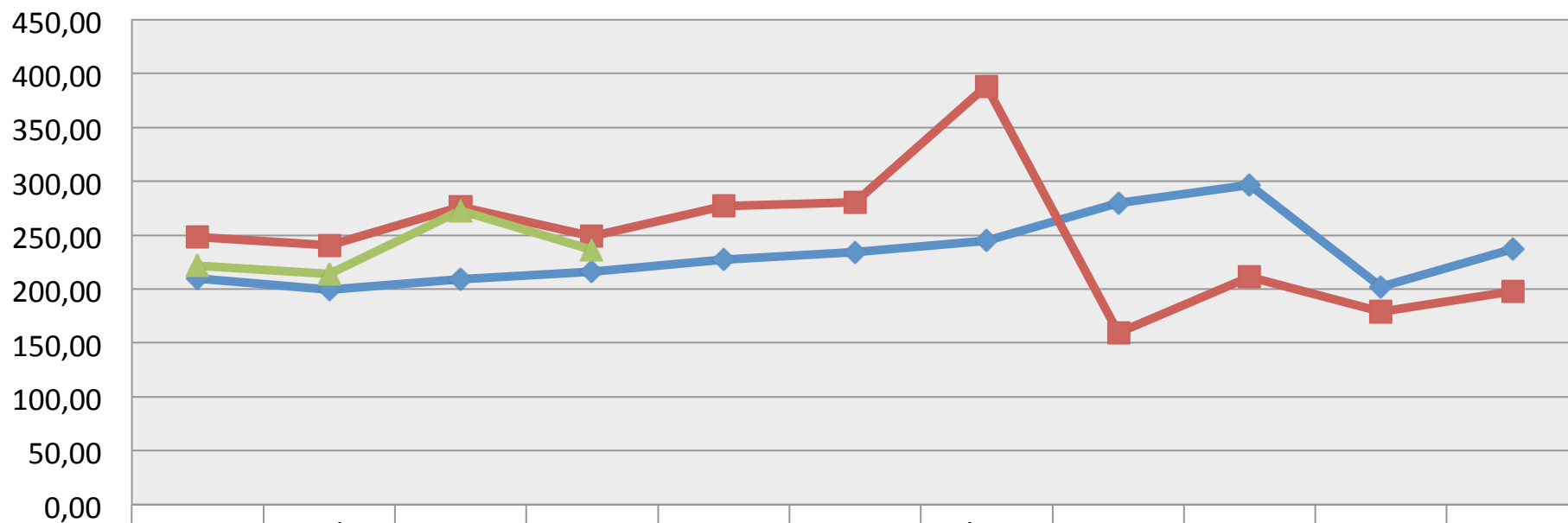


# GFIE Index April 2015



# GFIE Index April 2015

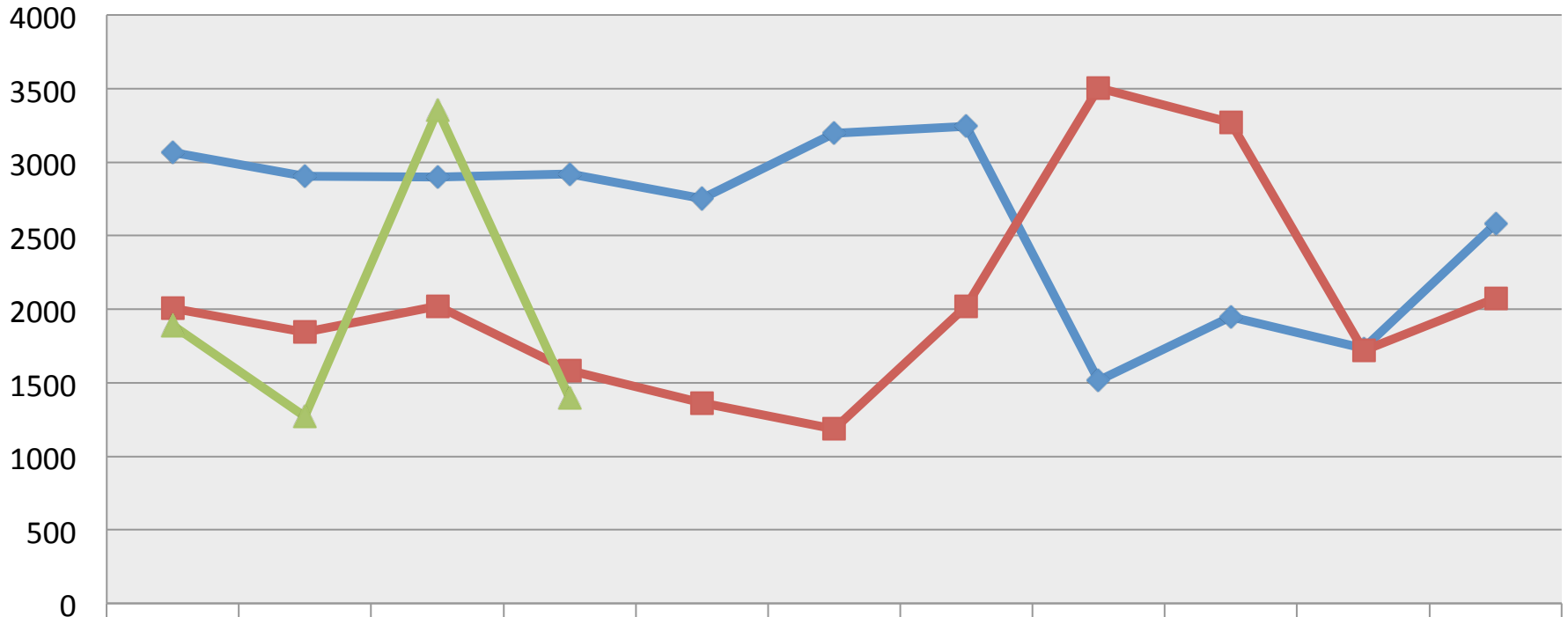
**Electronic Goods, Tools and Equipment (<5 000€) Index (France)**



	Jan	Feb	Mar	Apr	May	Jun	Jul-Aug	Sept	Oct	Nov	Dec
◆ 2013	210,02	199,46	209,13	215,82	227,22	234,09	244,94	279,53	296,72	202,12	236,92
■ 2014	248,13	240,60	276,00	249,13	277,02	280,86	388,62	159,30	211,56	179,14	197,64
▲ 2015	221,54	213,82	272,97	236,20							

# GFIE Index April 2015

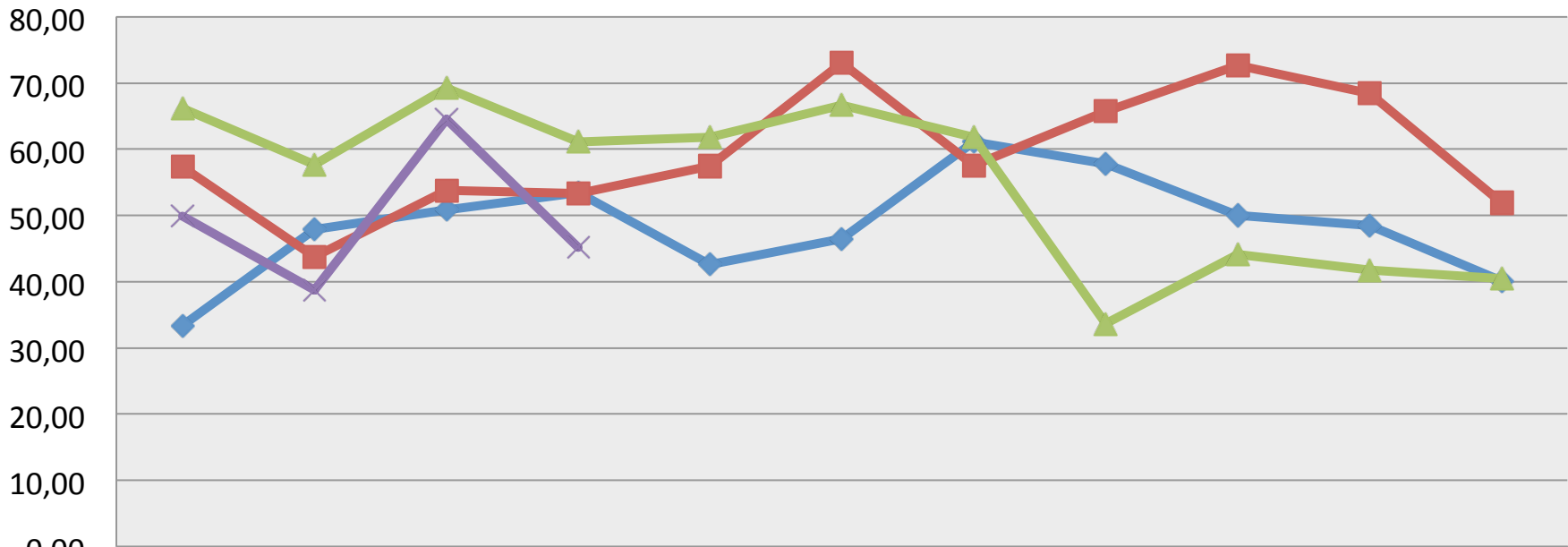
**Machines, Products and Services to production Index (France)**



	Jan	Feb	Mar	Apr	May	Jun	Jul-Aug	Sept	Oct	Nov	Dec
◆ 2013	3064	2906	2899	2917	2753	3199	3245	1515	1946	1735	2578
■ 2014	2006	1845	2021	1584	1361	1185	2024	3506	3270	1718	2072
▲ 2015	1889	1271	3352	1393							

# GFIE Index April 2015

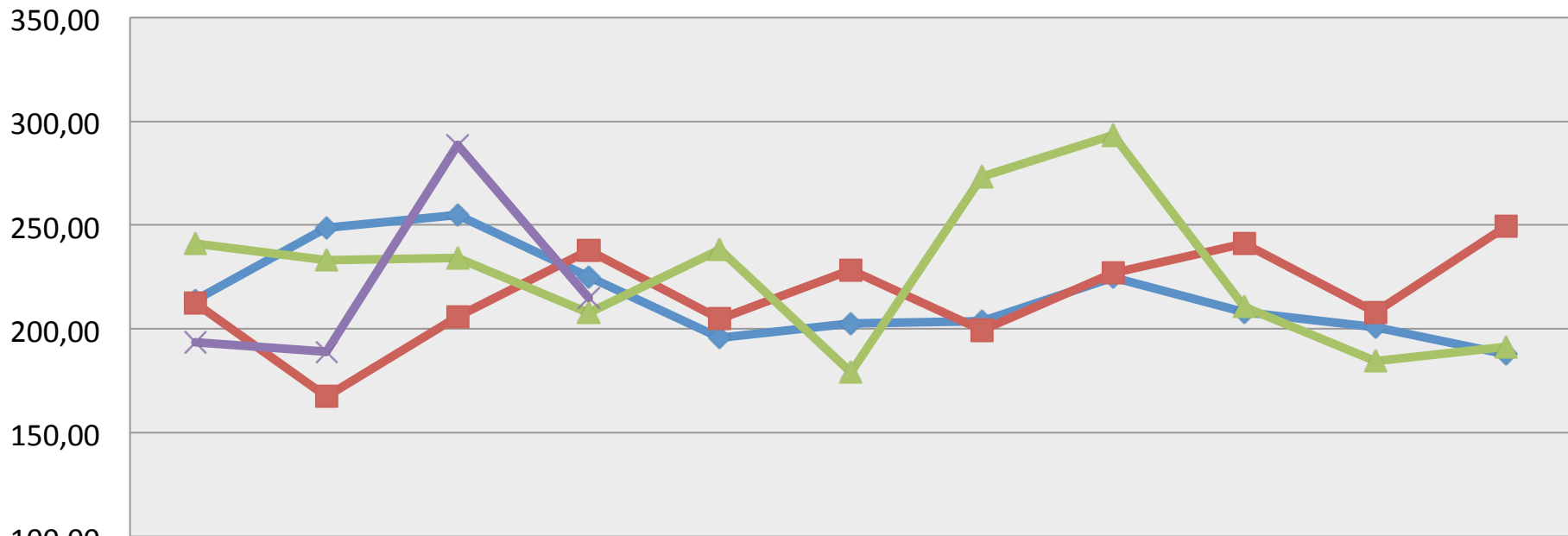
## Export Index



	Jan	Feb	Mar	Apr	May	Jun	Jul-Aug	Sept	Oct	Nov	Dec
2012	33,34	47,86	50,89	53,38	42,60	46,48	61,13	57,83	49,99	48,54	40,09
2013	57,33	43,71	53,83	53,26	57,42	72,97	57,51	65,70	72,64	68,40	51,88
2014	66,13	57,69	69,26	61,14	61,86	66,65	61,84	33,67	44,15	41,76	40,50
2015	49,86	38,74	64,50	45,23							

# GFIE Index April 2015

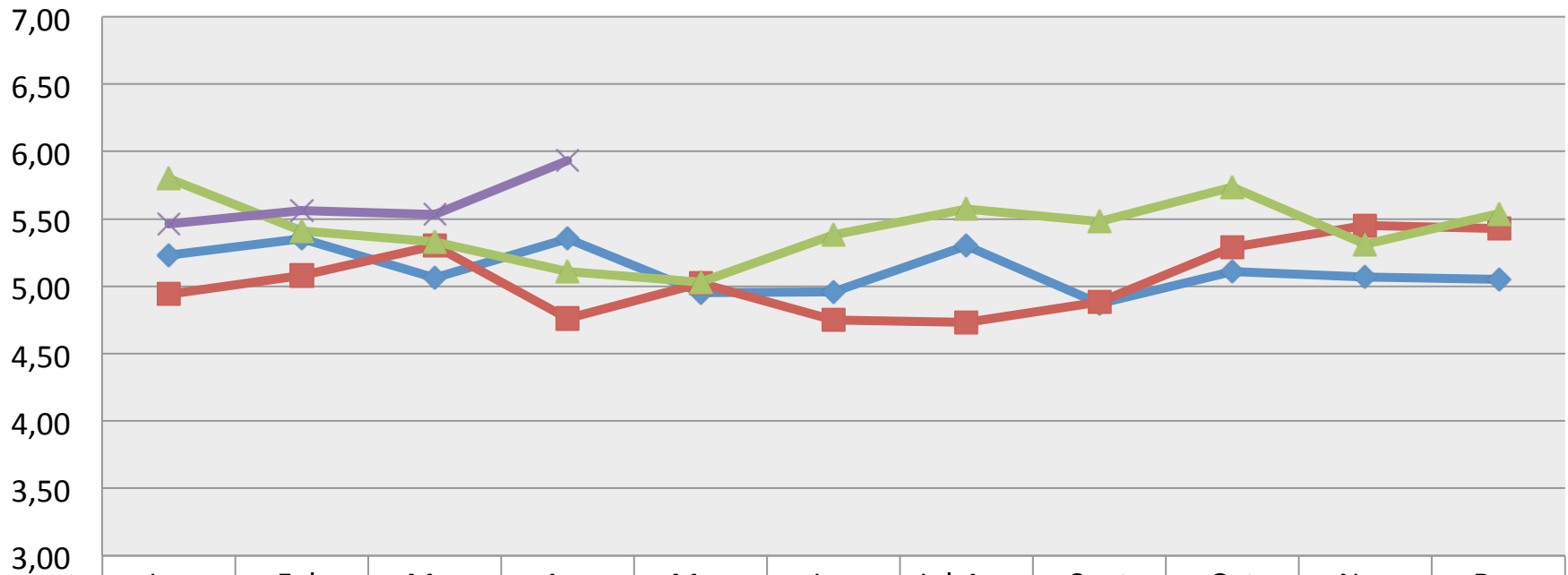
## Global GFIE Index (France + Export)



	Jan	Feb	Mar	Apr	May	Jun	Jul-Aug	Sept	Oct	Nov	Dec
◆ 2012	214,05	248,69	254,93	225,13	195,88	202,54	203,81	224,76	208,16	200,74	187,77
■ 2013	212,34	167,47	205,88	237,66	204,89	228,38	199,27	226,82	241,24	207,94	249,58
▲ 2014	241,27	233,14	234,25	207,82	238,08	179,12	273,33	293,37	210,55	184,61	191,46
✕ 2015	193,67	189,05	288,52	215,16							

# GFIE Index April 2015

## Trust Index

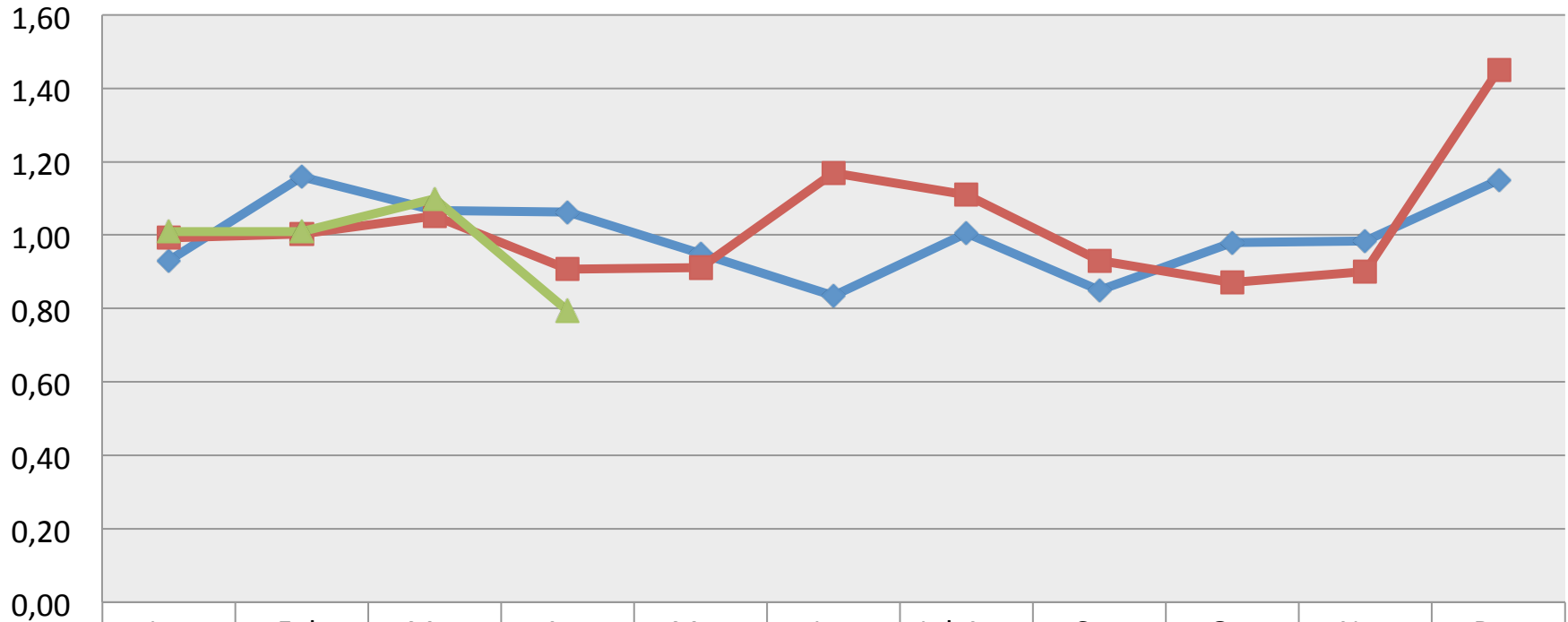


◆ 2012	5,23	5,35	5,06	5,35	4,95	4,96	5,30	4,87	5,11	5,07	5,05
■ 2013	4,94	5,08	5,30	4,76	5,02	4,75	4,73	4,88	5,29	5,45	5,43
▲ 2014	5,80	5,41	5,33	5,11	5,03	5,38	5,57	5,48	5,74	5,31	5,54
✕ 2015	5,46	5,56	5,53	5,93							



# GFIE Index April 2015

## Book Bill



2013

2014

2015