

# ACSIEL Index February 2016

## Comments from M. Pierre-Jean Albrieux, President of GFIE

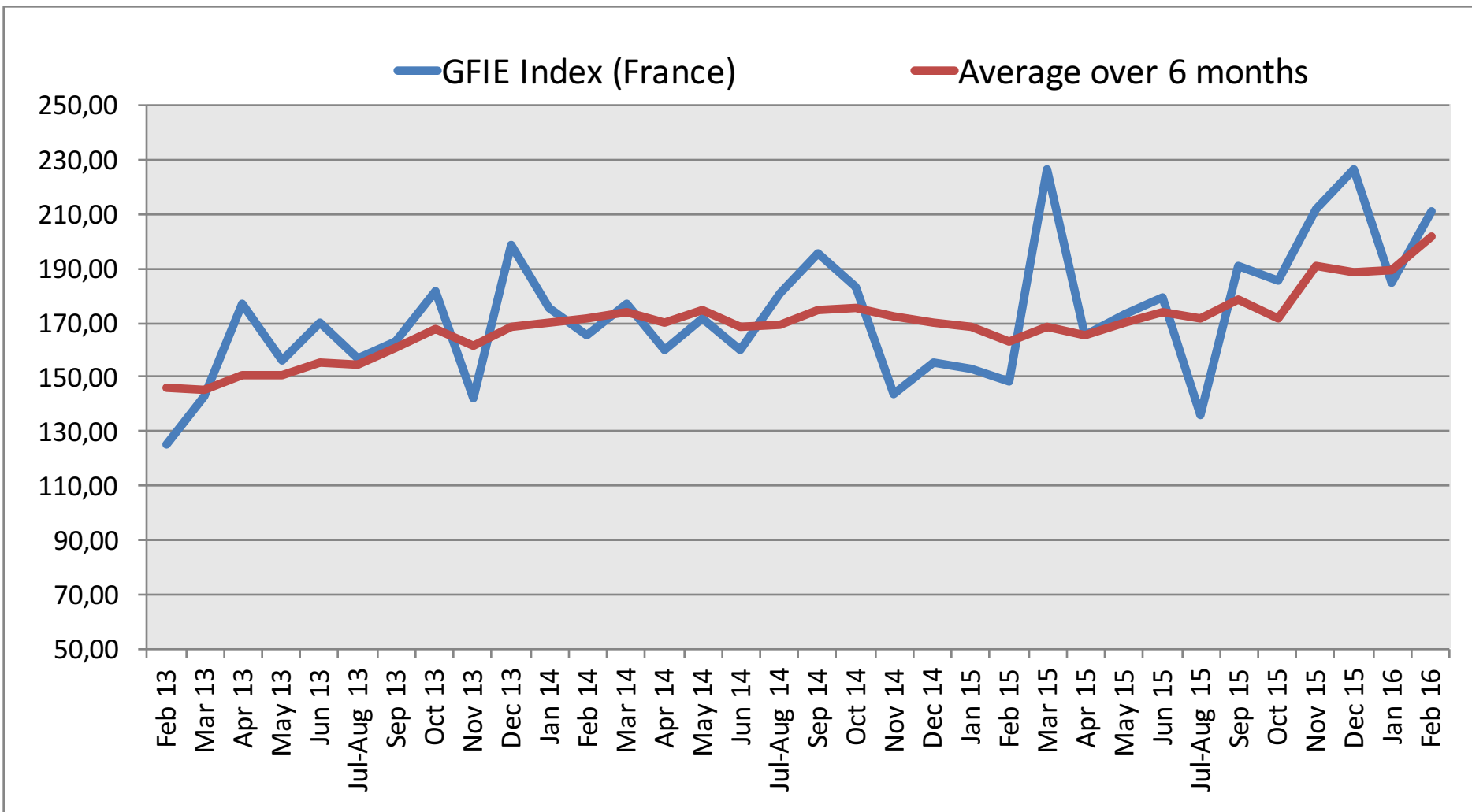
Following the good performances of December and the little break of January, February is very satisfying. The France index has grown by 14% and it is positive for February. The confidence index which broke the record with 6.19 on January has waned to 5.51. It remains at a good level, though. The over-amortisation measures are undeniably partly responsible for this.

Comments of the association point out that orders are exceptional in France since the beginning of the year. Our clients are feeling good then, the evidence being that production of electronic good is real in France.

Only damper recruitment remains very hard (lack of candidates) not only for technical jobs but also for more basic tasks. Let's hope that this scarcity does not hamper the development.

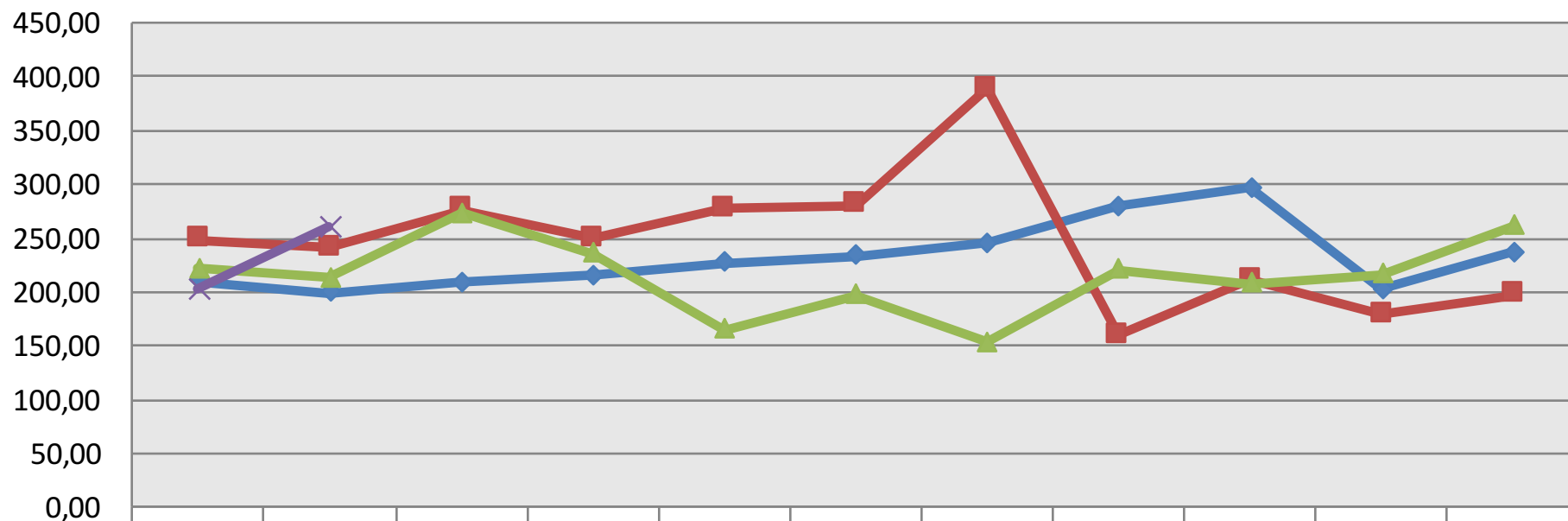
Trust Index		France Index variation over January 2015							BookBill			
5,51		+14,04%							0,824			
	Feb 15	Mar 15	Apr 15	May 15	Jun 15	Jul-A 15	Sep 15	Oct 15	Nov 15	Dec 15	Jan 16	Feb 15
France GFIE Index	148,17	226,60	165,75	172,82	178,97	136,34	191,21	185,42	211,83	226,62	184,91	210,88
Average over 6 months	163,17	168,32	165,39	170,29	174,24	171,44	178,62	171,75	179,43	188,40	189,39	201,81

# ACSIEL Index February 2016



# ACSIEL Index February 2016

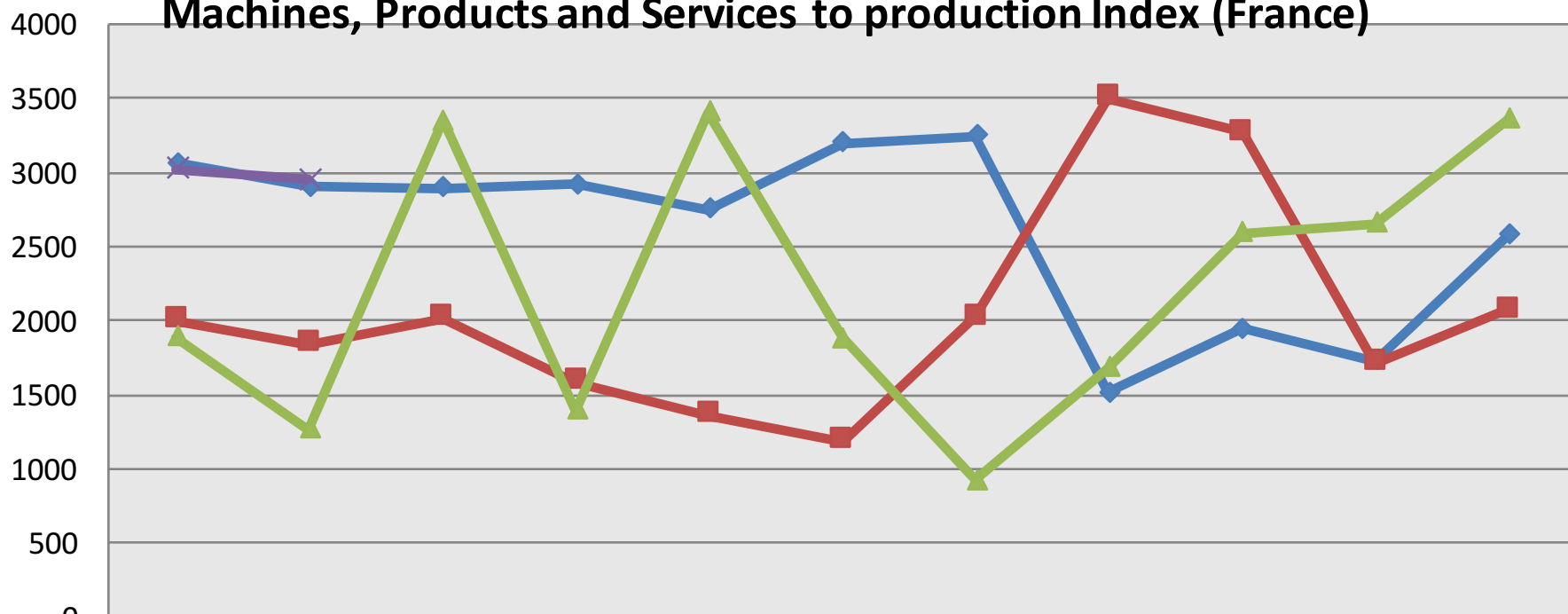
## Electronic Goods, Tools and Equipment (<5 000€) Index (France)



	Jan	Feb	Mar	Apr	May	Jun	Jul-Aug	Sept	Oct	Nov	Dec
◆ 2013	210,02	199,46	209,13	215,82	227,22	234,09	244,94	279,53	296,72	202,12	236,92
■ 2014	248,13	240,60	276,00	249,13	277,02	280,86	388,62	159,30	211,56	179,14	197,64
▲ 2015	221,54	213,82	272,97	236,20	164,71	197,42	153,75	221,13	207,46	216,23	261,21
✕ 2016	202,82	260,35									

# ACSIEL Index February 2016

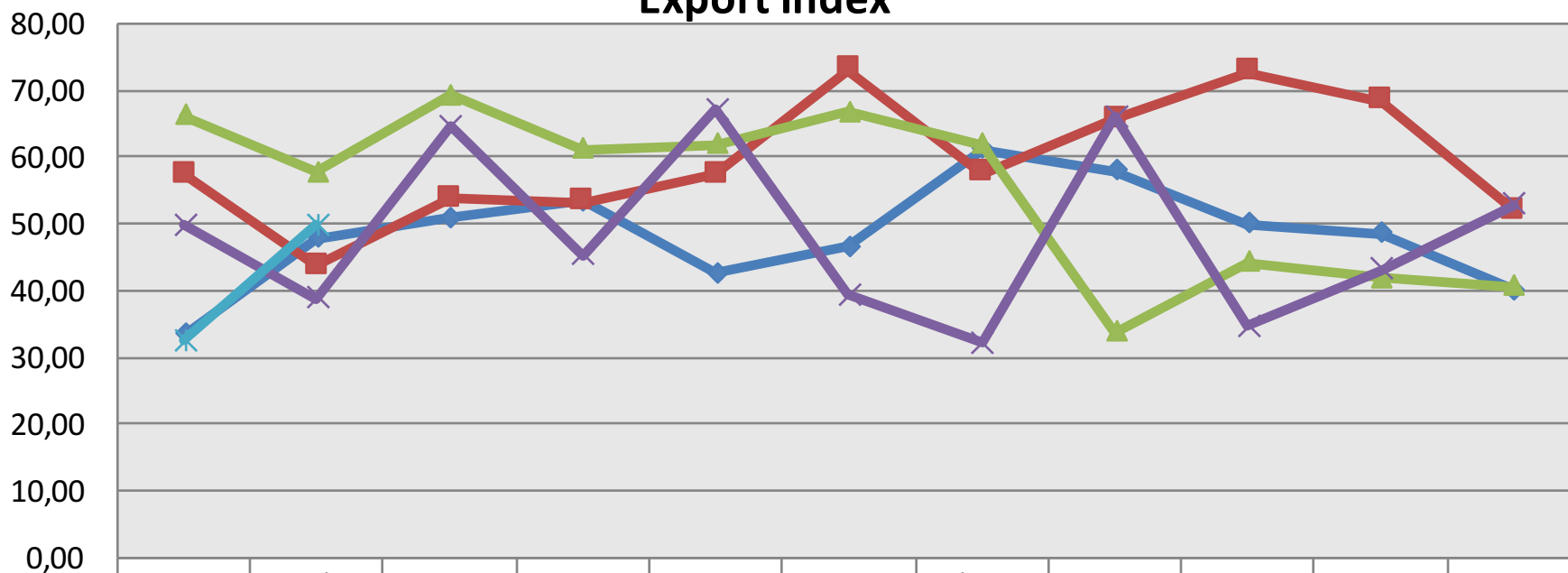
**Machines, Products and Services to production Index (France)**



	Jan	Feb	Mar	Apr	May	Jun	Jul-Aug	Sept	Oct	Nov	Dec
◆ 2013	3064	2906	2899	2917	2753	3199	3245	1515	1946	1735	2578
■ 2014	2006	1845	2021	1584	1361	1185	2024	3506	3270	1718	2072
▲ 2015	1889	1271	3352	1393	3410	1883	926	1680	2592	2660	3362
✕ 2016	3020	2950									

# ACSIEL Index February 2016

## Export Index

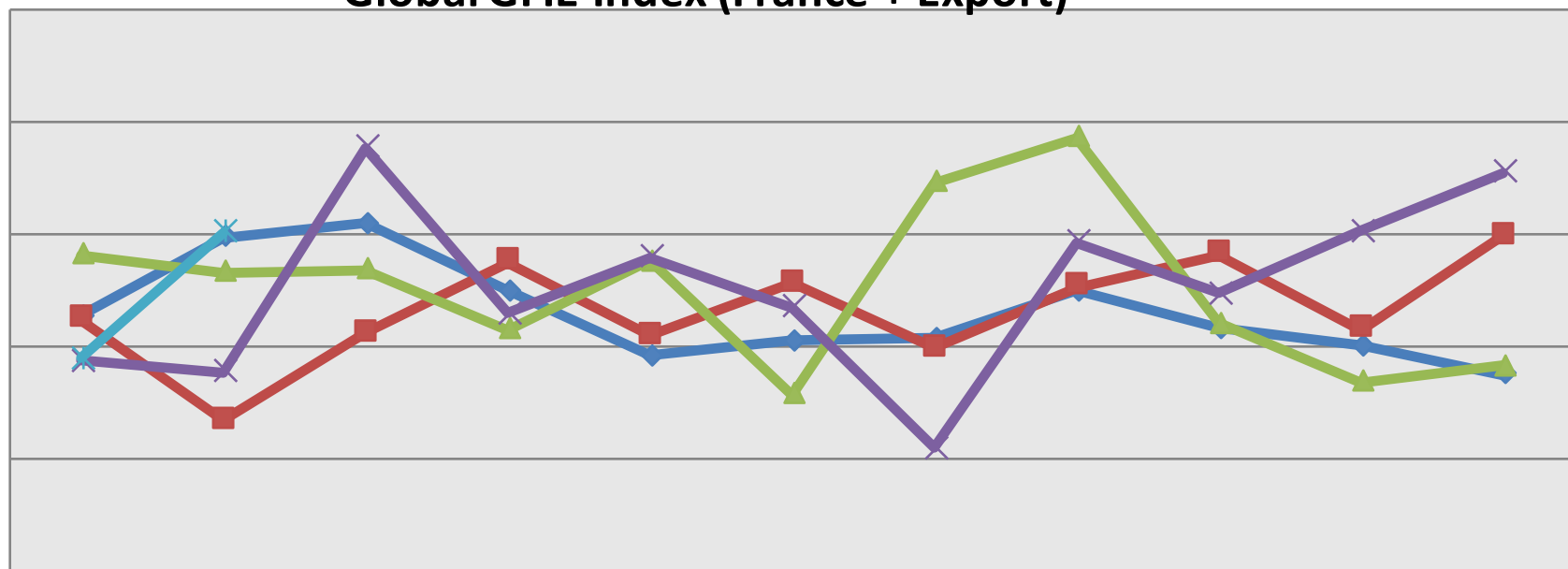


	Jan	Feb	Mar	Apr	May	Jun	Jul-Aug	Sept	Oct	Nov	Dec
—◆— 2012	33,34	47,86	50,89	53,38	42,60	46,48	61,13	57,83	49,99	48,54	40,09
—■— 2013	57,33	43,71	53,83	53,26	57,42	72,97	57,51	65,70	72,64	68,40	51,88
—▲— 2014	66,13	57,69	69,26	61,14	61,86	66,65	61,84	33,67	44,15	41,76	40,50
—✕— 2015	49,86	38,74	64,50	45,23	67,03	39,25	32,18	65,92	34,67	43,19	52,82
—✱— 2016	32,53	49,71									

# ACSIEL Index February 2016

**Global GFIE Index (France + Export)**

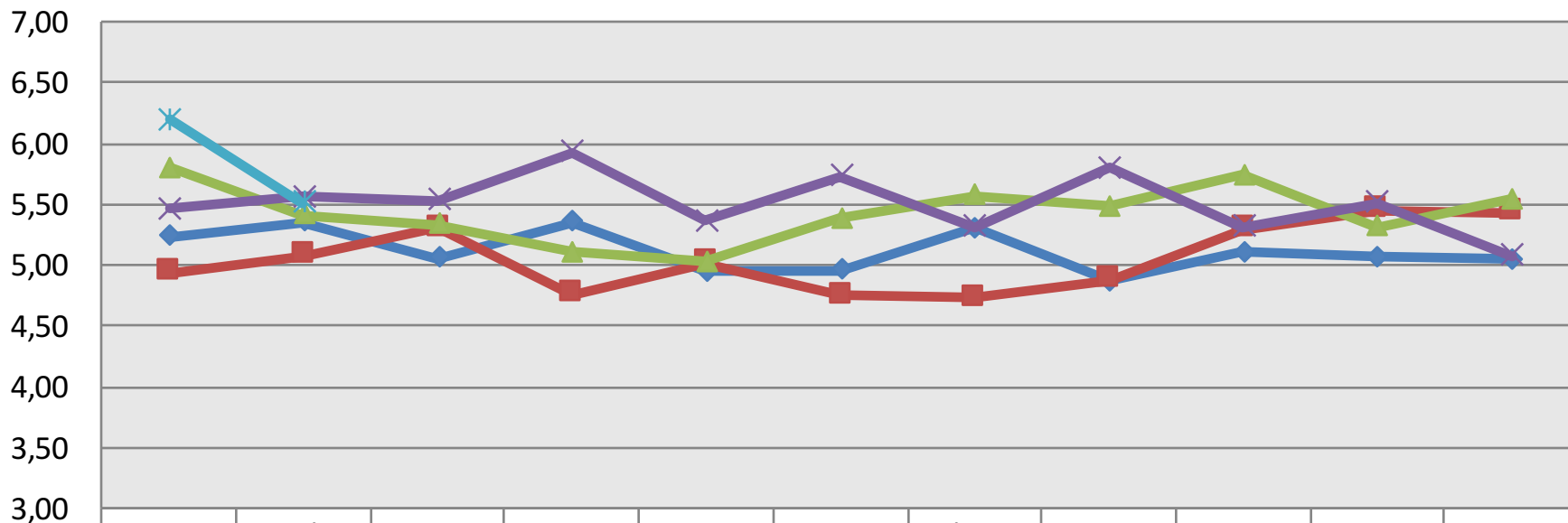
350,00  
300,00  
250,00  
200,00  
150,00  
100,00



	Jan	Feb	Mar	Apr	May	Jun	Jul-Aug	Sept	Oct	Nov	Dec
◆ 2012	214,05	248,69	254,93	225,13	195,88	202,54	203,81	224,76	208,16	200,74	187,77
■ 2013	212,34	167,47	205,88	237,66	204,89	228,38	199,27	226,82	241,24	207,94	249,58
▲ 2014	241,27	233,14	234,25	207,82	238,08	179,12	273,33	293,37	210,55	184,61	191,46
✕ 2015	193,67	189,05	288,52	215,16	240,20	217,82	155,07	246,45	223,90	251,38	277,37
✱ 2016	194,94	250,80									

# ACSIEL Index February 2016

## Trust Index

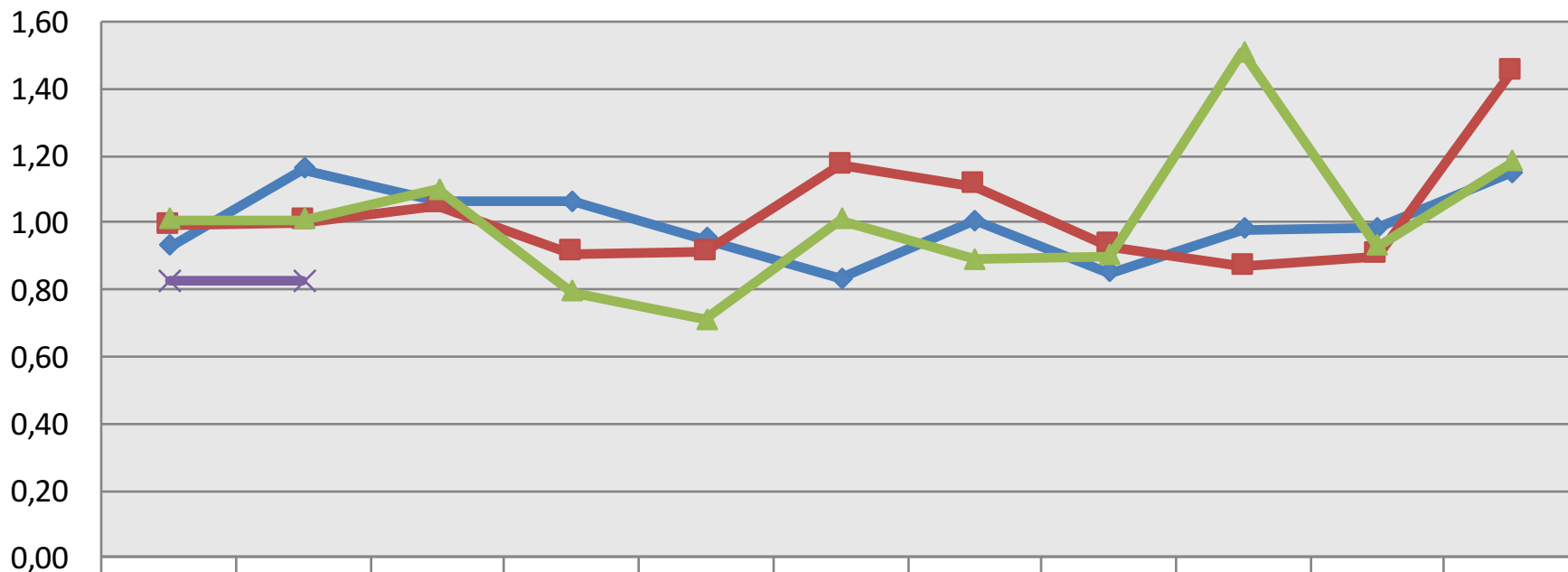


	Jan	Feb	Mar	Apr	May	Jun	Jul-Aug	Sept	Oct	Nov	Dec
◆ 2012	5,23	5,35	5,06	5,35	4,95	4,96	5,30	4,87	5,11	5,07	5,05
■ 2013	4,94	5,08	5,30	4,76	5,02	4,75	4,73	4,88	5,29	5,45	5,43
▲ 2014	5,80	5,41	5,33	5,11	5,03	5,38	5,57	5,48	5,74	5,31	5,54
✕ 2015	5,46	5,56	5,53	5,93	5,36	5,73	5,31	5,80	5,31	5,51	5,08
✱ 2016	6,19	5,51									



# ACSIEL Index February 2016

## Book Bill



	Jan	Feb	Mar	Apr	May	Jun	Jul-Aug	Sep	Oct	Nov	Dec
2013	0,93	1,16	1,07	1,06	0,95	0,83	1,01	0,85	0,98	0,99	1,15
2014	0,99	1,00	1,05	0,91	0,91	1,17	1,11	0,93	0,87	0,90	1,45
2015	1,01	1,01	1,10	0,79	0,71	1,01	0,89	0,90	1,51	0,93	1,18
2016	0,82	0,82									