

ACSIEL Index December 2015

Comments from M. Pierre-Jean Albrieux, President of GFIE

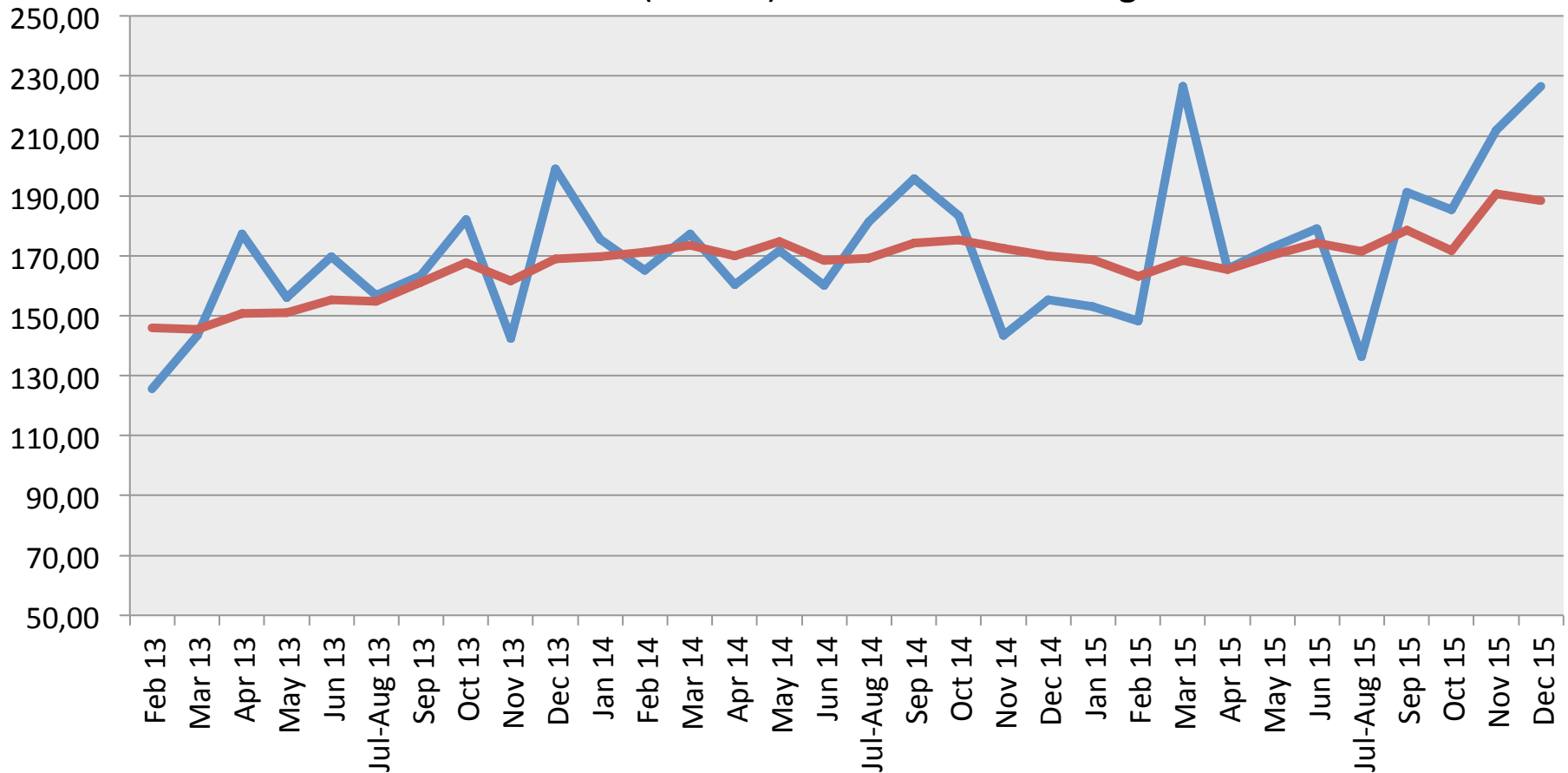
The GFIE joined ACSIEL with the SIMTEC on January 1st in order to build ACSIEL Alliance Electronique. The GFIE index will become the ACSIEL Alliance Electronique from the Collège Equipements et Services. When it comes to the November 2015 index we rather wanted to keep the name « GFIE index » and its logo. Like every year at this moment, I take advantage of the November index publication to wish you a happy new year.

I am all the more pleased in that it is the first time in 5 years that the November index increases by 5,35% compared to the October France index and by 12% compared to the global index. The confidence index accounts for 5,51 in the same way. It is enjoyable to see that November is no longer the « jinx » and that our activities are heading in the right direction.

Trust Index		France Index variation over November 2015							BookBill			
5,08		+6,98%							1,181			
	Dec 14	Jan 15	Feb 15	Mar 15	Apr 15	May 15	Jun 15	Jul-A 15	Sep 15	Oct 15	Nov 15	Dec 15
France GFIE Index	155,29	153,10	148,17	226,60	165,75	172,82	178,97	136,34	191,21	185,42	211,83	226,62
Average over 6 months	169,84	168,69	163,17	168,32	165,39	170,29	174,24	171,44	178,62	171,75	179,43	188,40

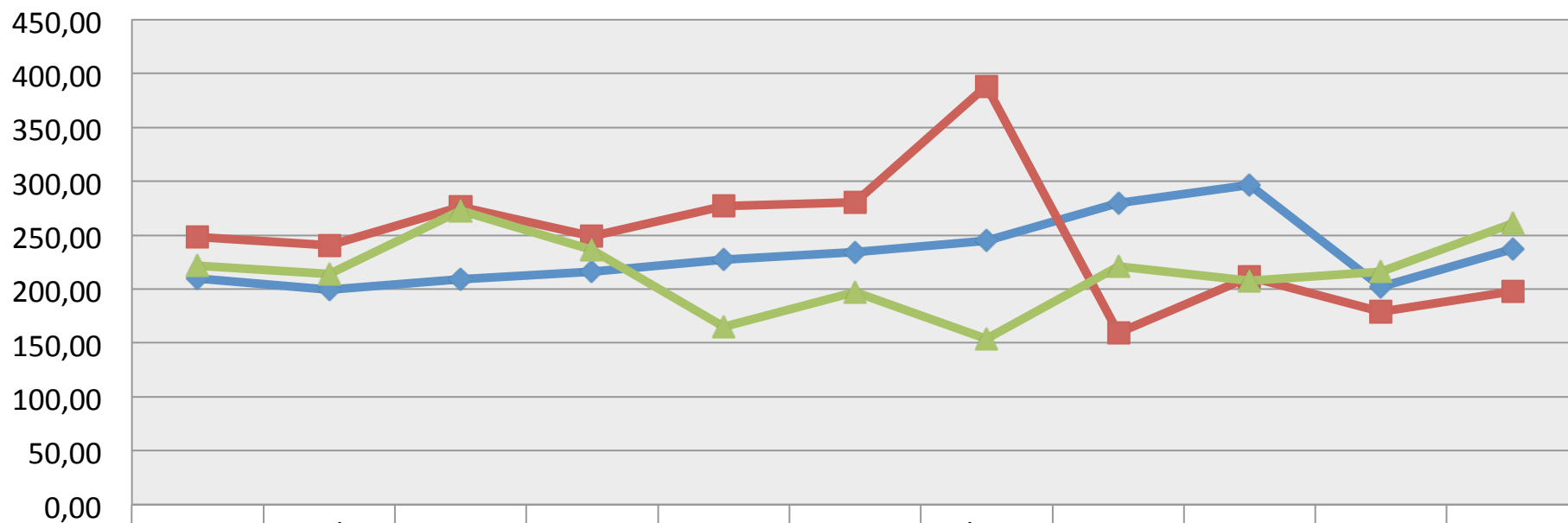
ACSIEL Index December 2015

— GFIE Index (France) — Average over 6 months



ACSIEL Index December 2015

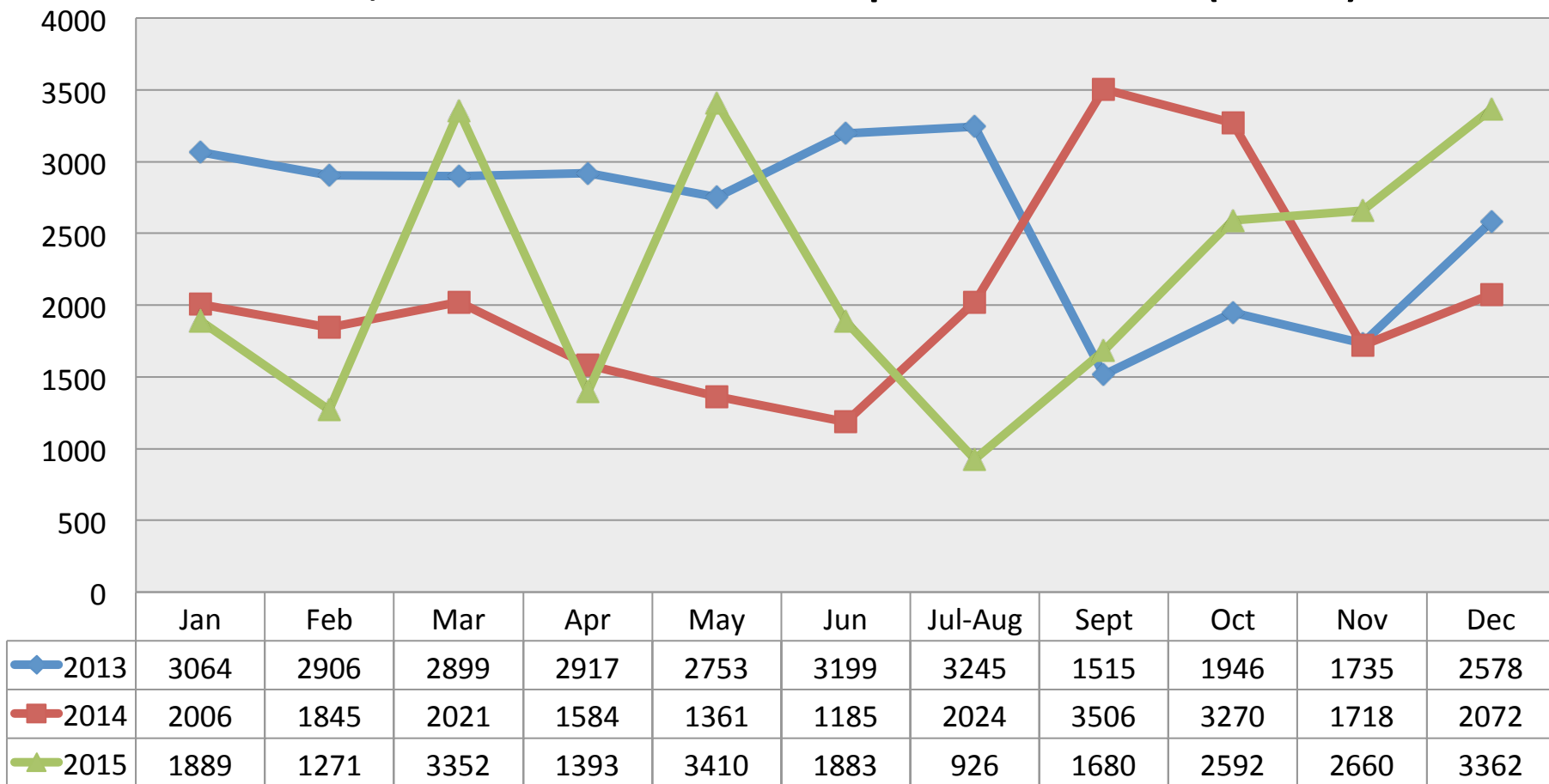
Electronic Goods, Tools and Equipment (<5 000€) Index (France)



	Jan	Feb	Mar	Apr	May	Jun	Jul-Aug	Sept	Oct	Nov	Dec
◆ 2013	210,02	199,46	209,13	215,82	227,22	234,09	244,94	279,53	296,72	202,12	236,92
■ 2014	248,13	240,60	276,00	249,13	277,02	280,86	388,62	159,30	211,56	179,14	197,64
▲ 2015	221,54	213,82	272,97	236,20	164,71	197,42	153,75	221,13	207,46	216,23	261,21

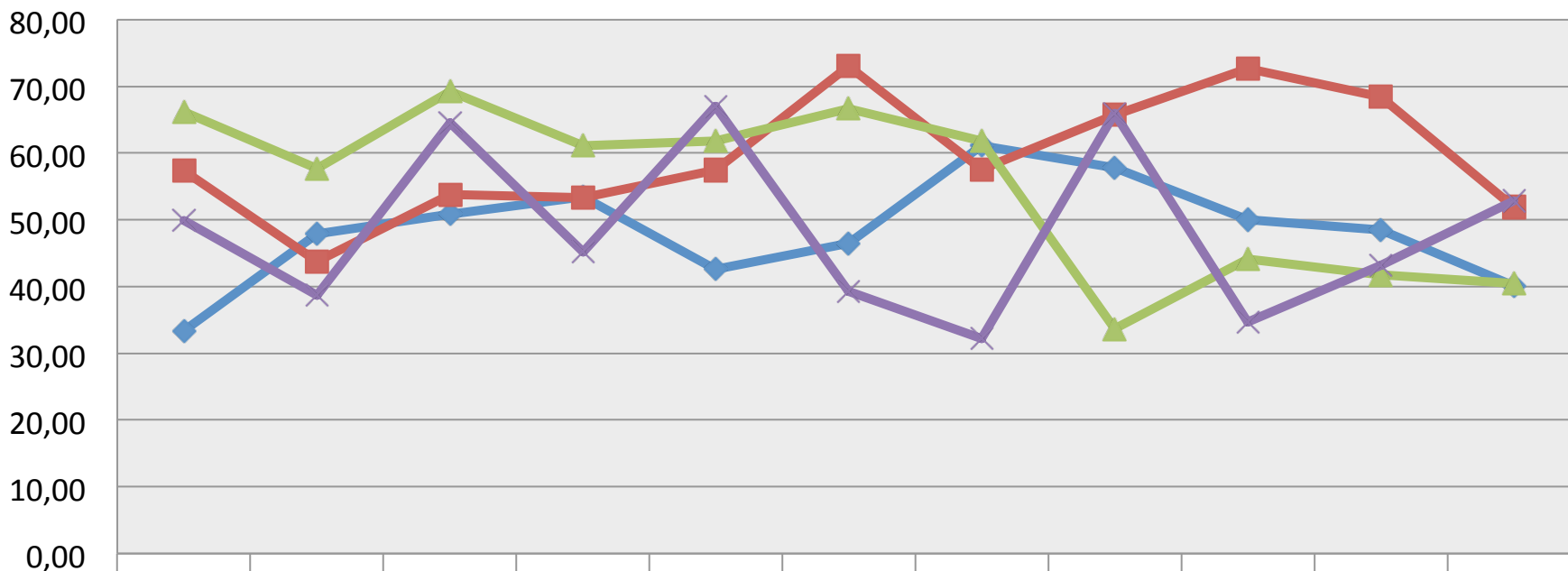
ACSIEL Index December 2015

Machines, Products and Services to production Index (France)



ACSIEL Index December 2015

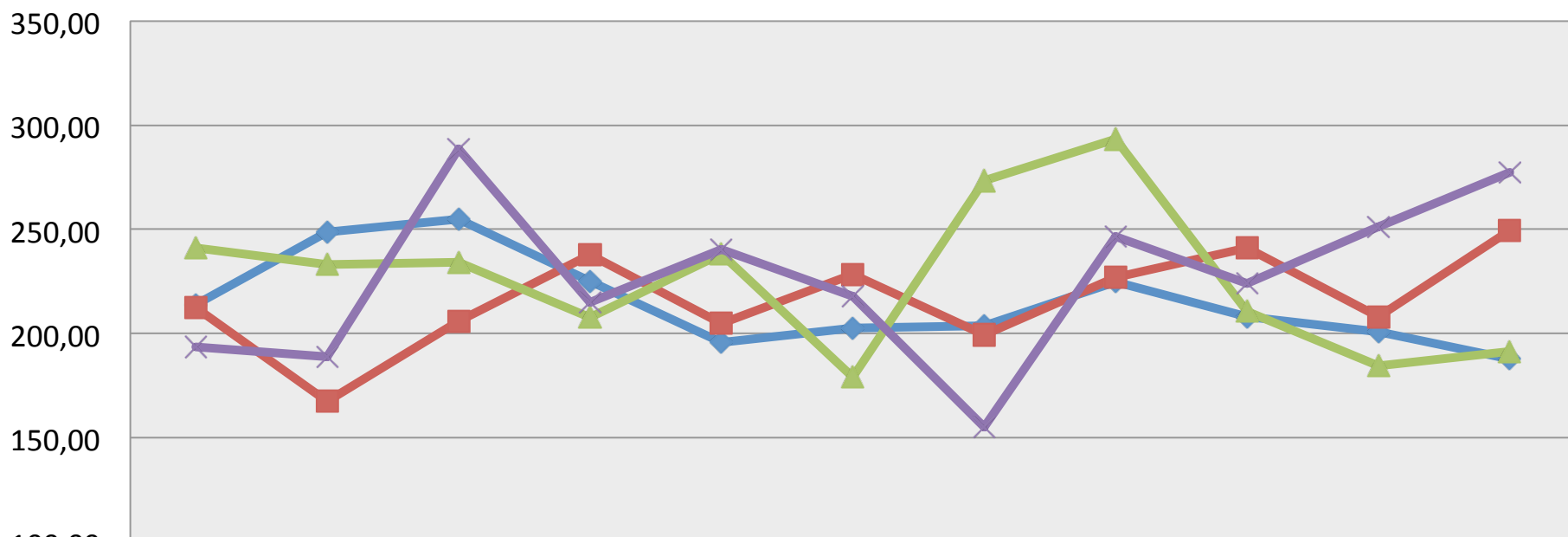
Export Index



	Jan	Feb	Mar	Apr	May	Jun	Jul-Aug	Sept	Oct	Nov	Dec
2012	33,34	47,86	50,89	53,38	42,60	46,48	61,13	57,83	49,99	48,54	40,09
2013	57,33	43,71	53,83	53,26	57,42	72,97	57,51	65,70	72,64	68,40	51,88
2014	66,13	57,69	69,26	61,14	61,86	66,65	61,84	33,67	44,15	41,76	40,50
2015	49,86	38,74	64,50	45,23	67,03	39,25	32,18	65,92	34,67	43,19	52,82

ACSIEL Index December 2015

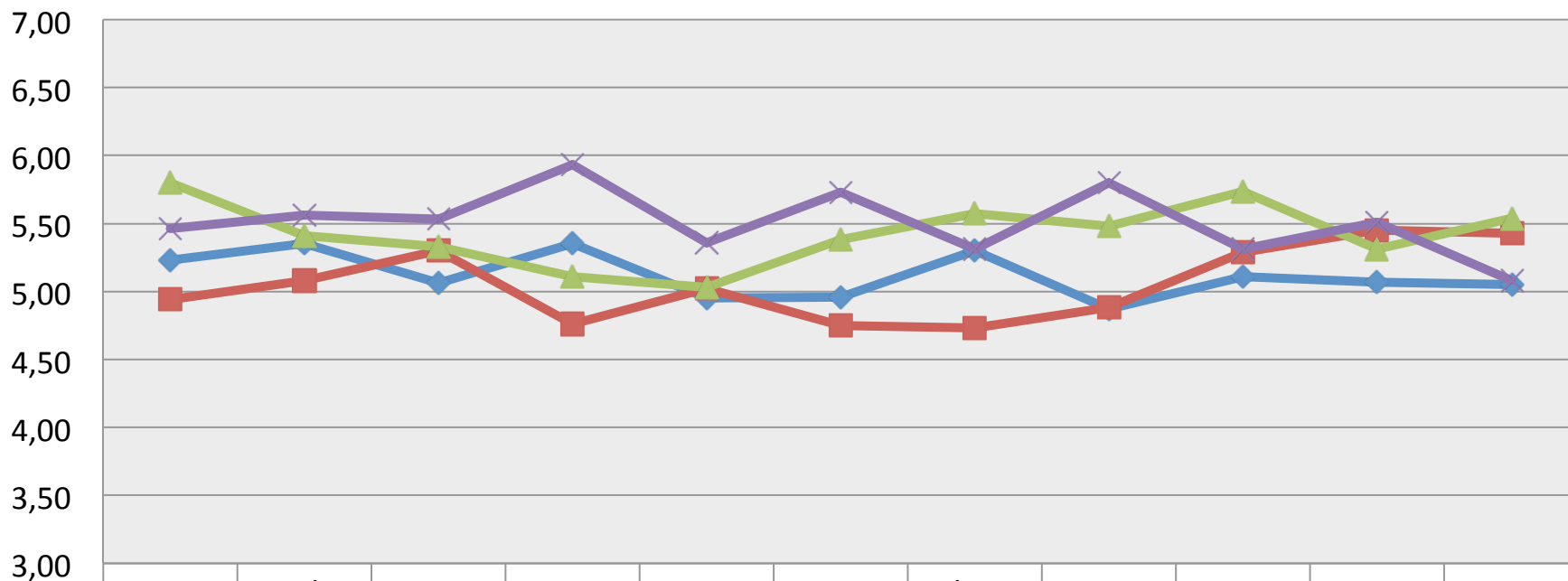
Global GFIE Index (France + Export)



	Jan	Feb	Mar	Apr	May	Jun	Jul-Aug	Sept	Oct	Nov	Dec
◆ 2012	214,05	248,69	254,93	225,13	195,88	202,54	203,81	224,76	208,16	200,74	187,77
■ 2013	212,34	167,47	205,88	237,66	204,89	228,38	199,27	226,82	241,24	207,94	249,58
▲ 2014	241,27	233,14	234,25	207,82	238,08	179,12	273,33	293,37	210,55	184,61	191,46
✕ 2015	193,67	189,05	288,52	215,16	240,20	217,82	155,07	246,45	223,90	251,38	277,37

ACSIEL Index December 2015

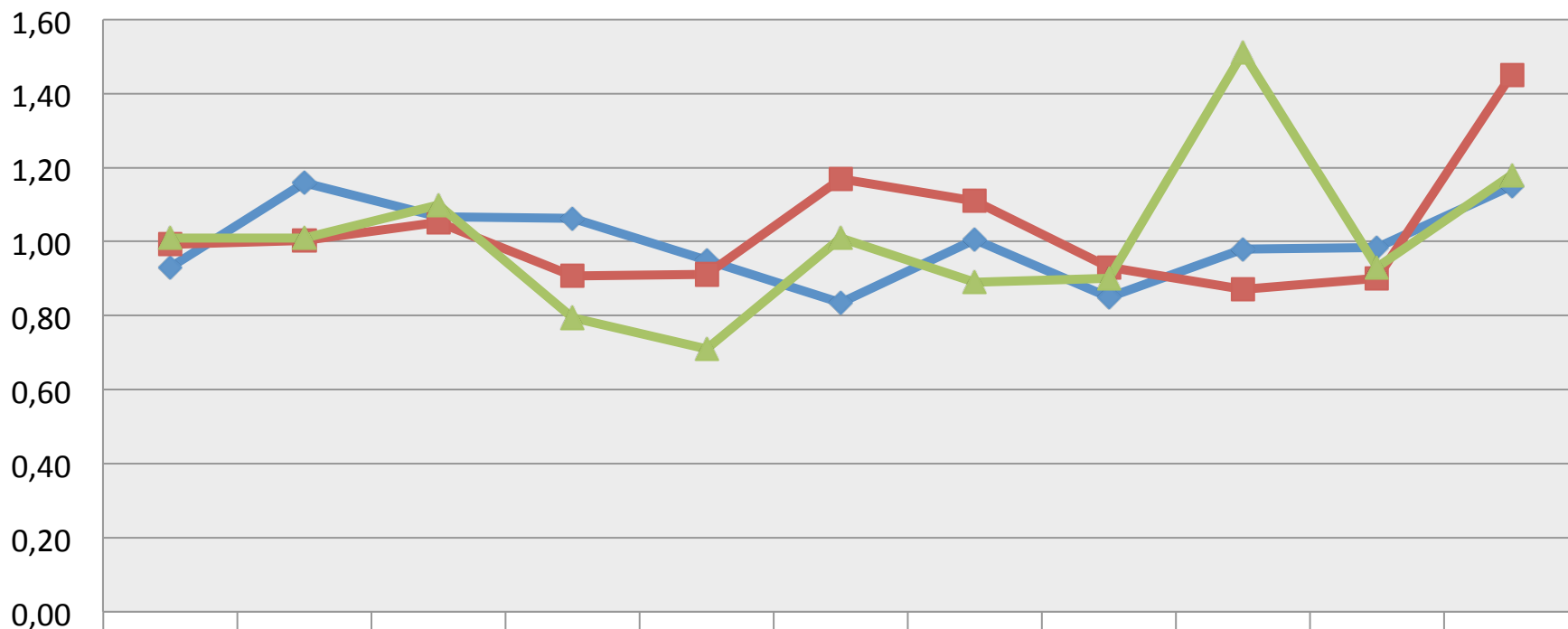
Trust Index



	Jan	Feb	Mar	Apr	May	Jun	Jul-Aug	Sept	Oct	Nov	Dec
◆ 2012	5,23	5,35	5,06	5,35	4,95	4,96	5,30	4,87	5,11	5,07	5,05
■ 2013	4,94	5,08	5,30	4,76	5,02	4,75	4,73	4,88	5,29	5,45	5,43
▲ 2014	5,80	5,41	5,33	5,11	5,03	5,38	5,57	5,48	5,74	5,31	5,54
✕ 2015	5,46	5,56	5,53	5,93	5,36	5,73	5,31	5,80	5,31	5,51	5,08

ACSIEL Index December 2015

Book Bill



2013

2014

2015